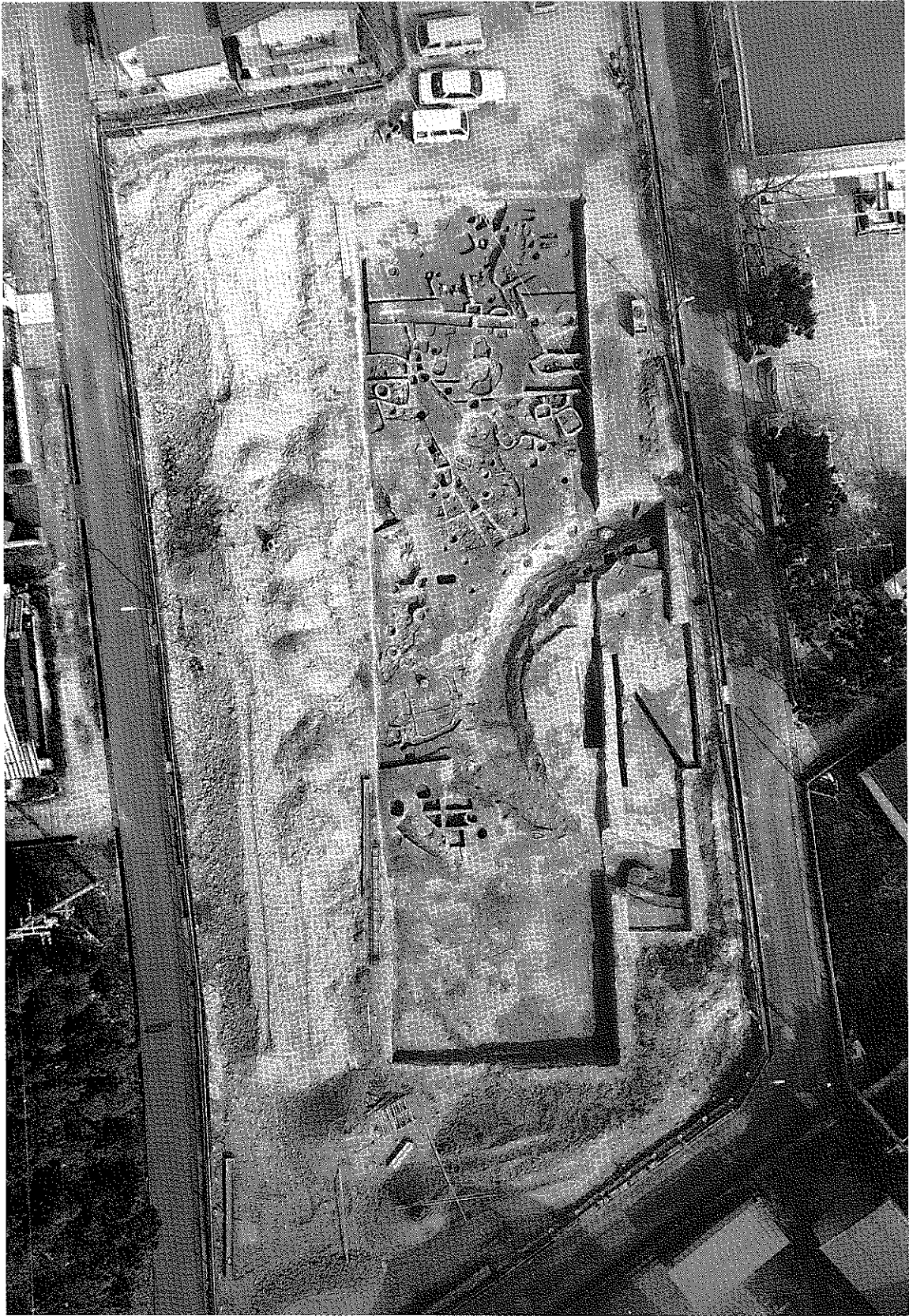


圖 版



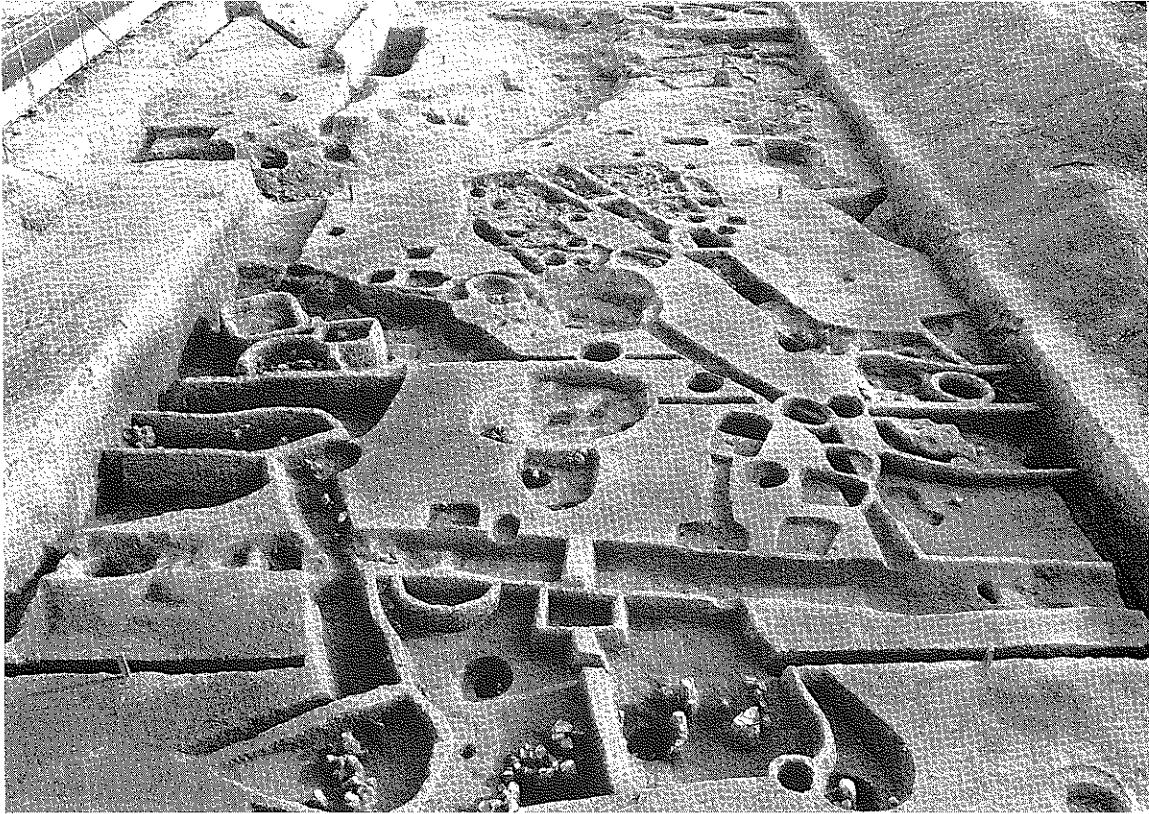
且棕遺跡空中写真



(1) 調査前の状況（北から）



(2) 調査地全景（北から）



(1) 調査地全景 (北から)



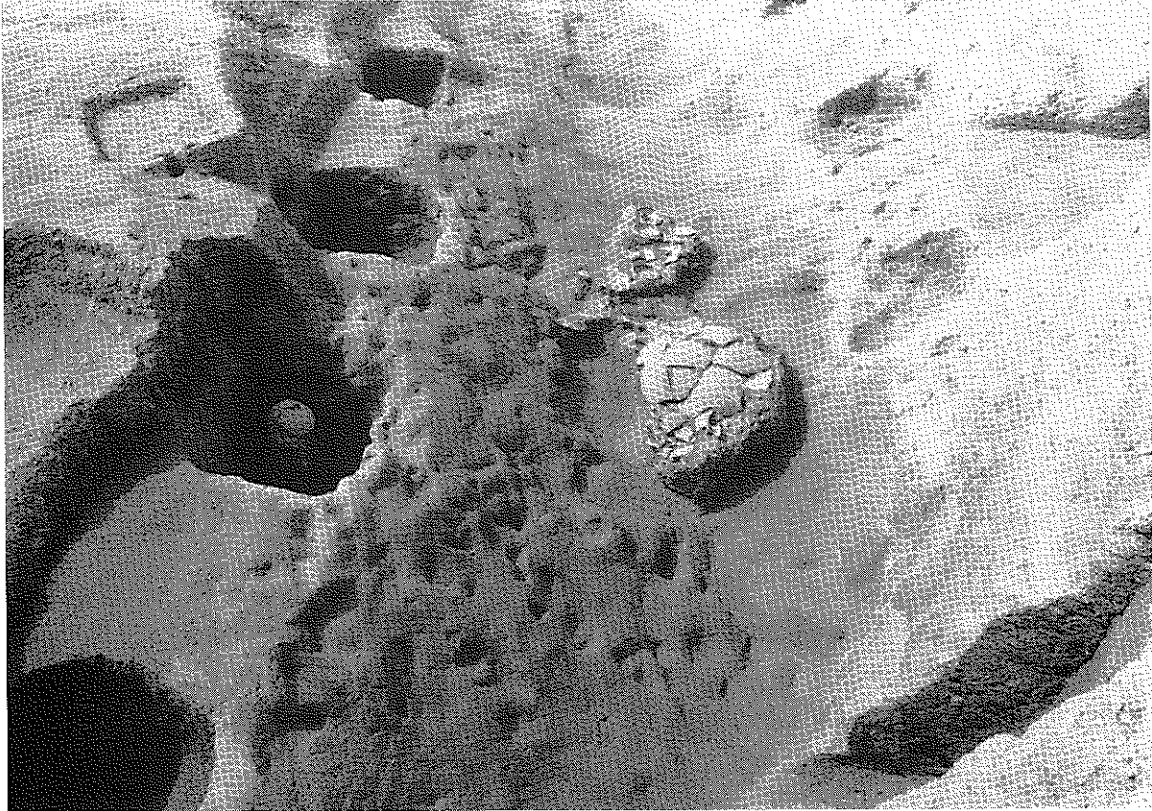
(2) 調査地全景 (南から)



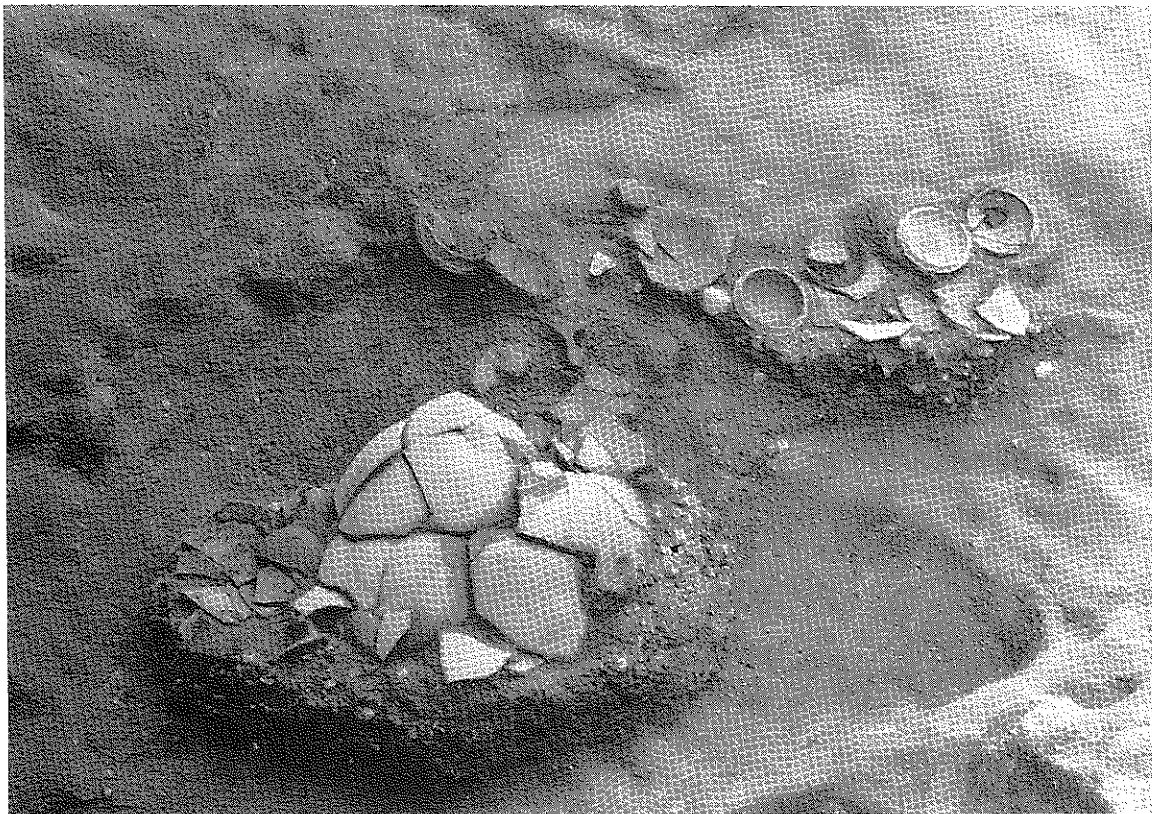
(1) SX01遺物出土状況 (南から)



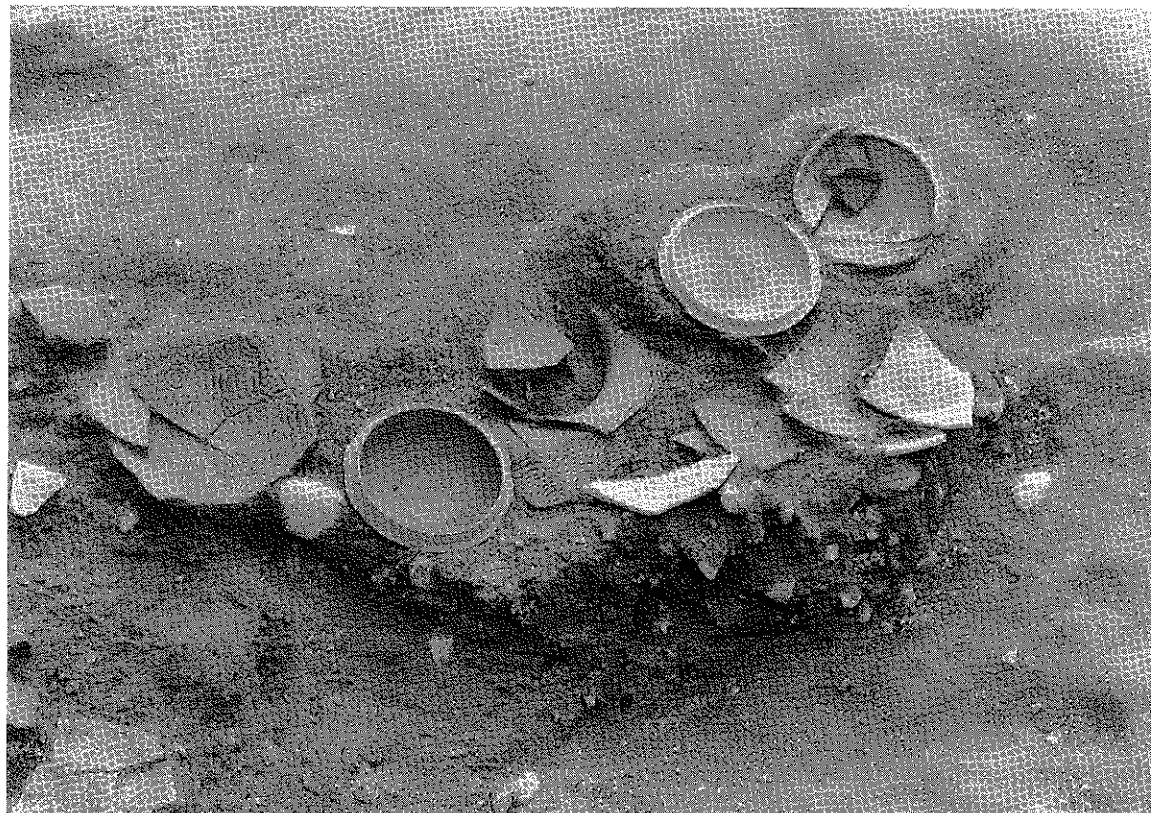
(2) SX01全景 (南から)



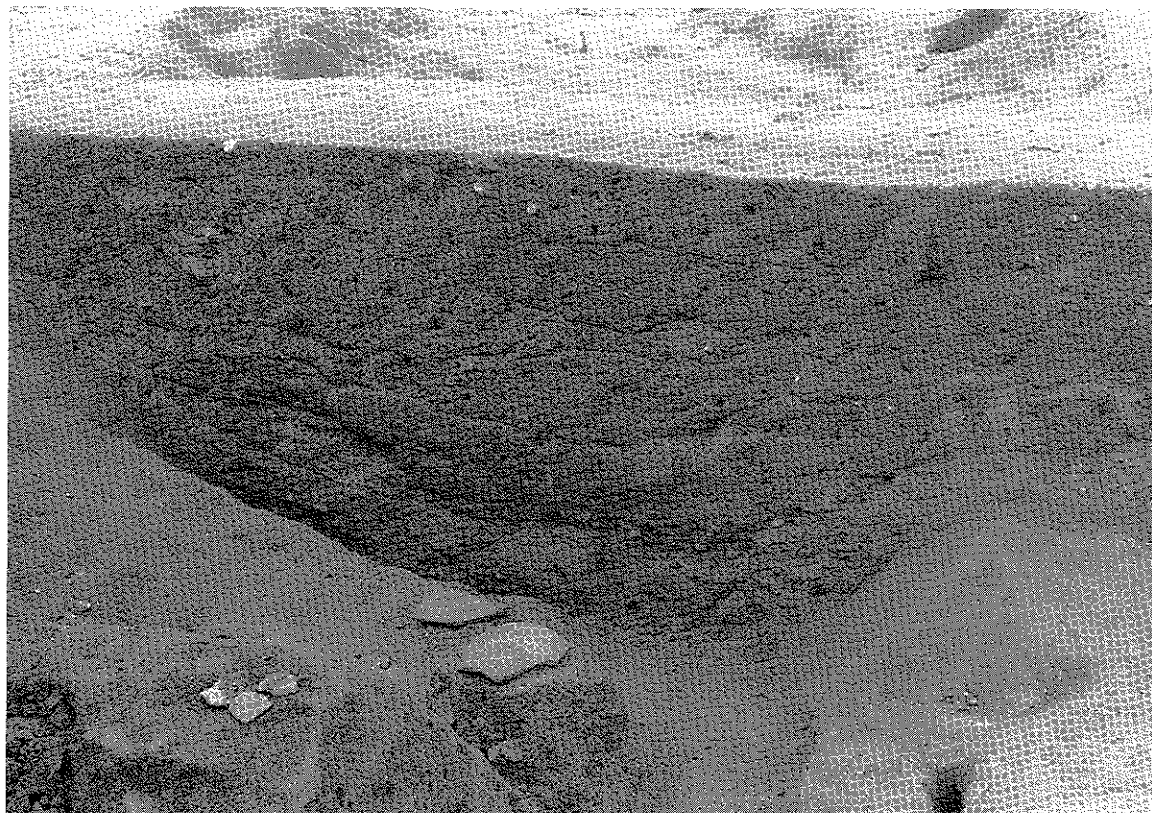
(1) SX01北部周溝内の陸橋と土器（東から）



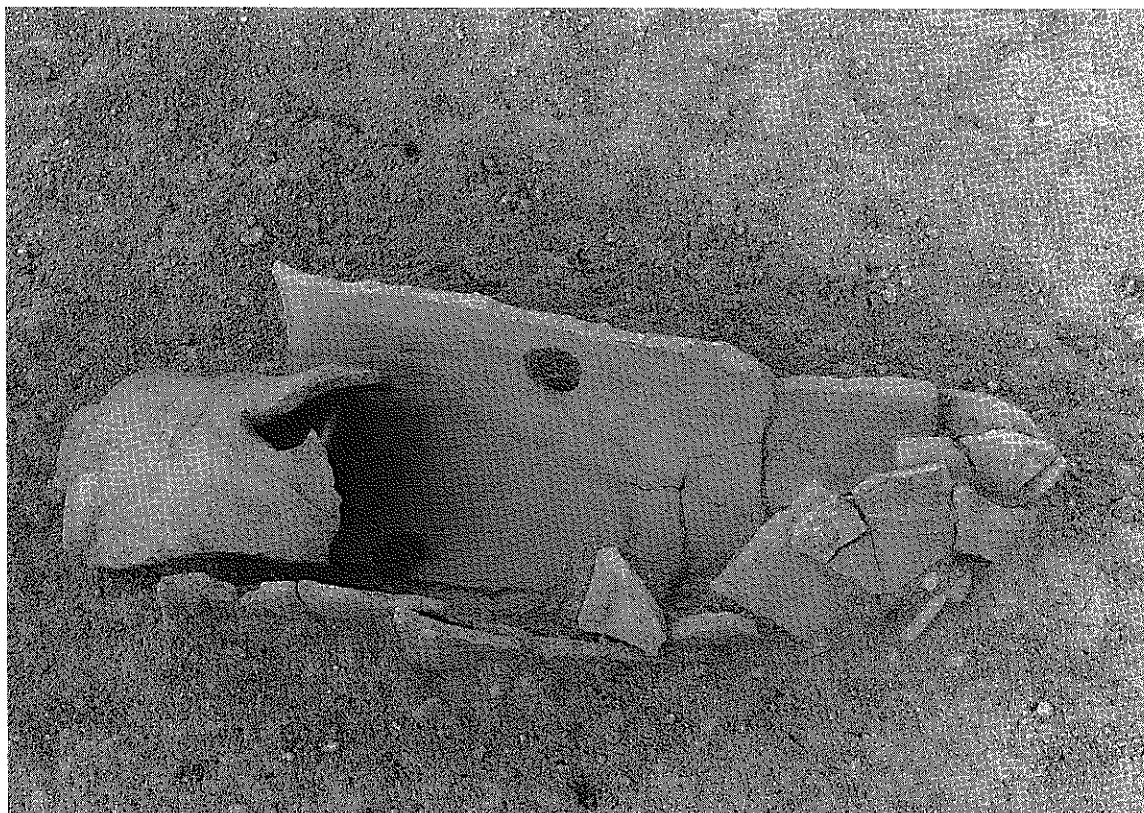
(2) SX01北部周溝内土器出土状況（北東から）



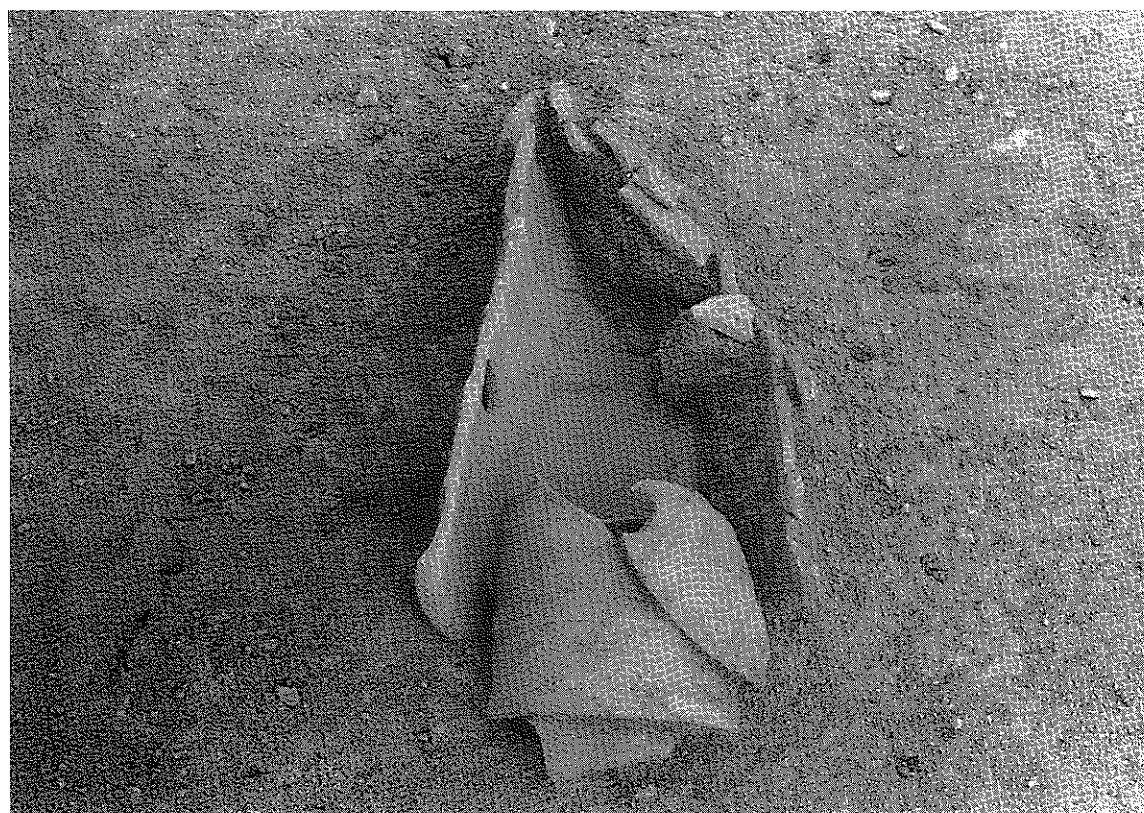
(1) SX01北部周溝内土器出土状態 (北東から)



(2) SX01周溝土層断面 (南から)



(1) SX01南部周溝内埴輪棺（南から）



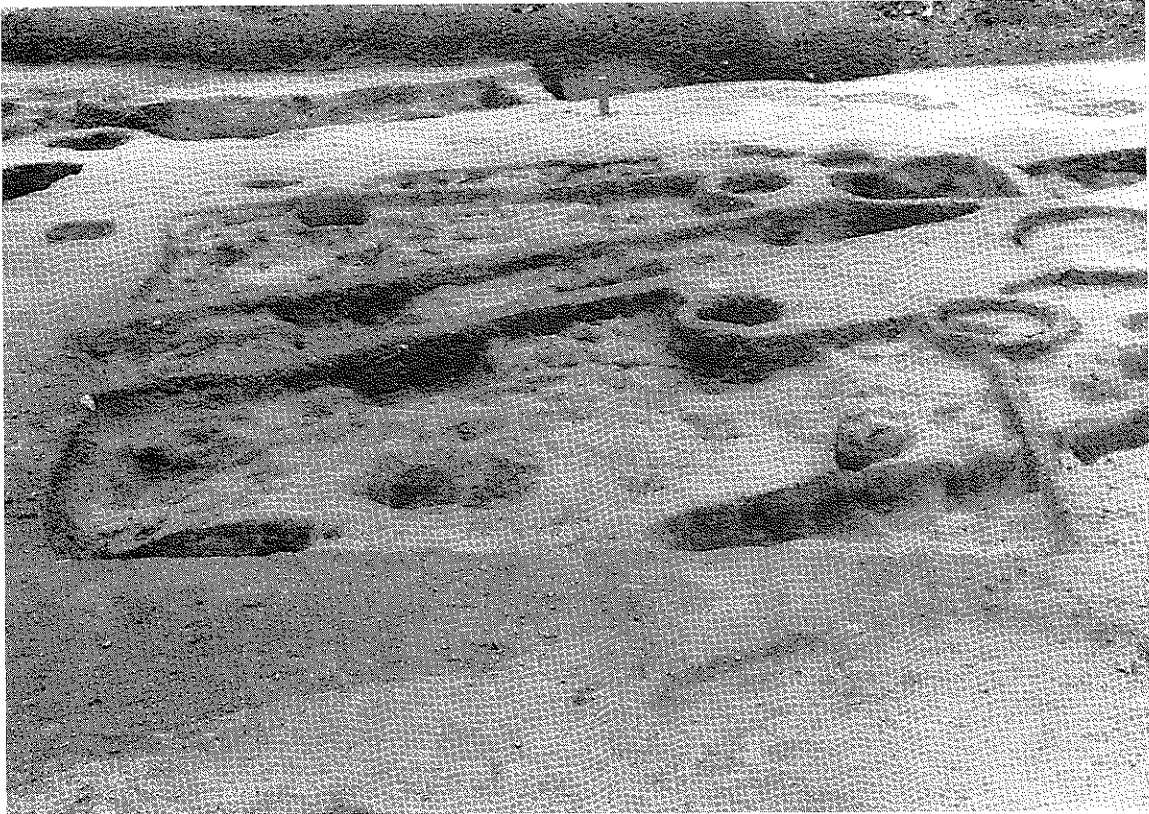
(2) SX01南部周溝内埴輪棺（西から）



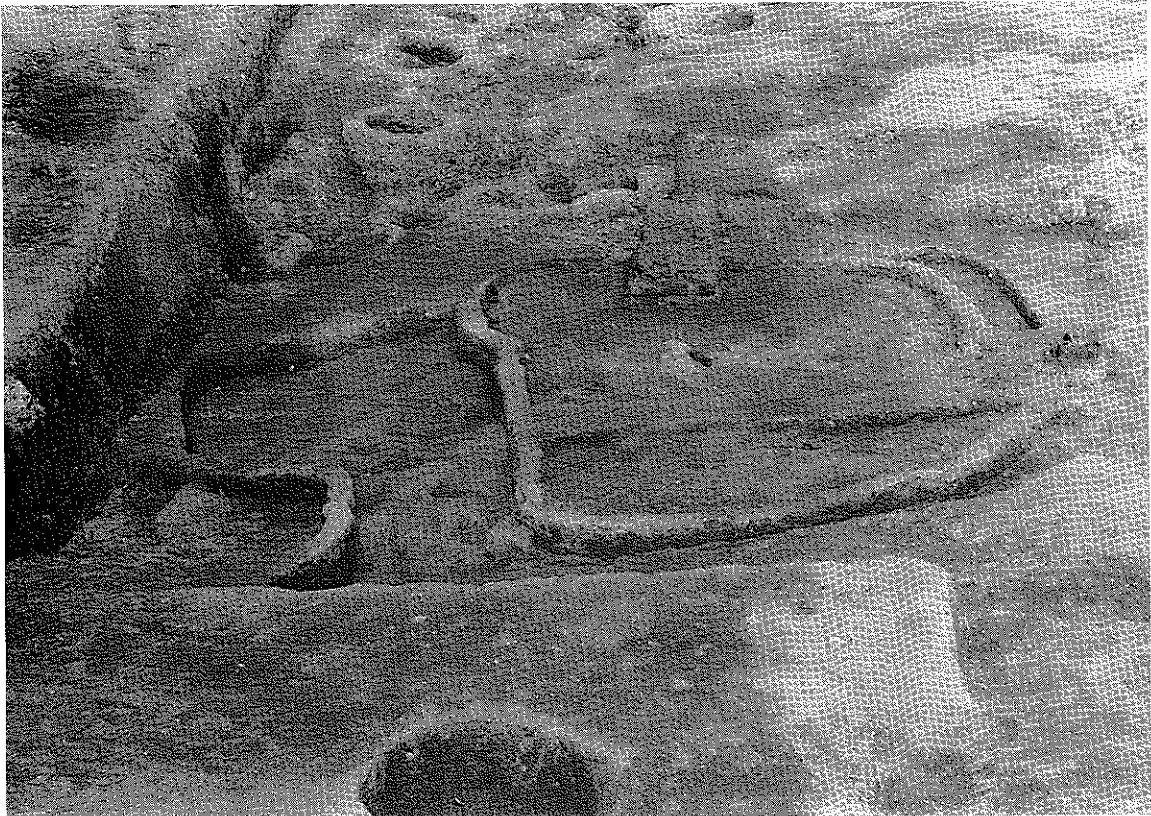
(1) SK22全景 (南西から)



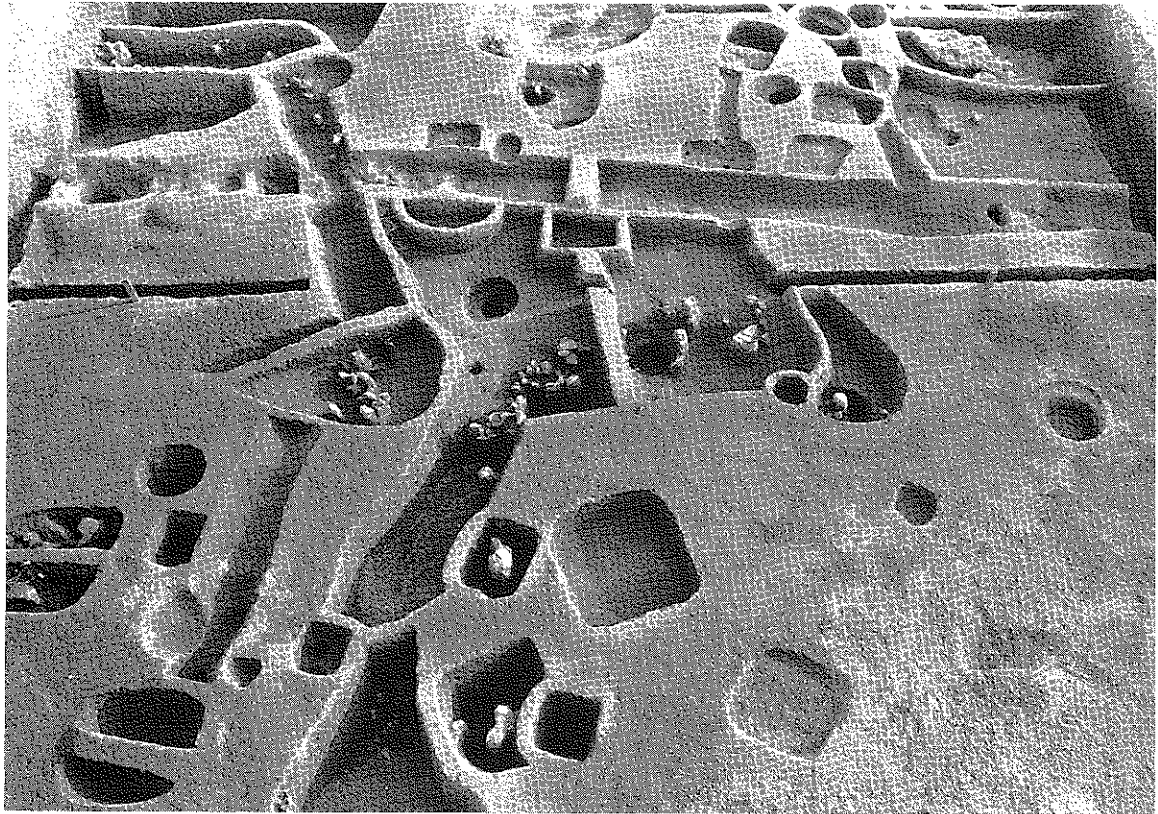
(2) SK22土器出土状態 (南から)



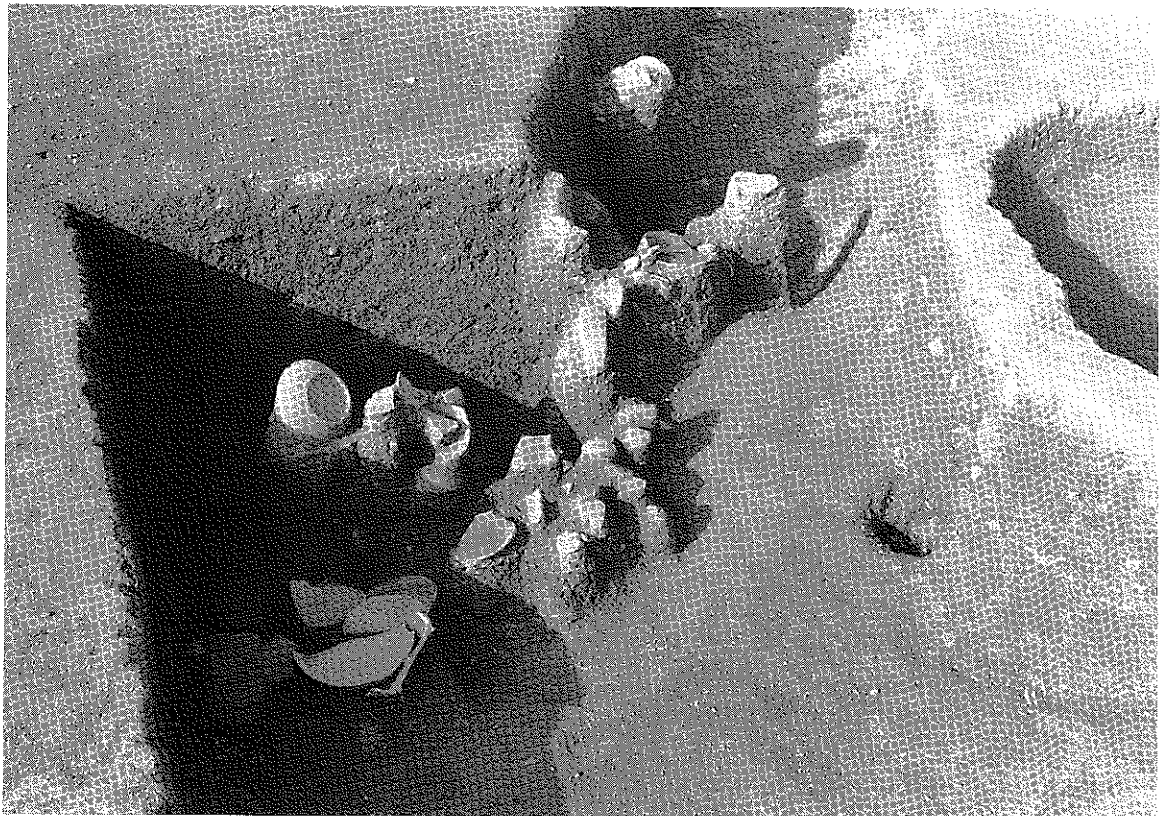
(1) SB01全景 (東から)



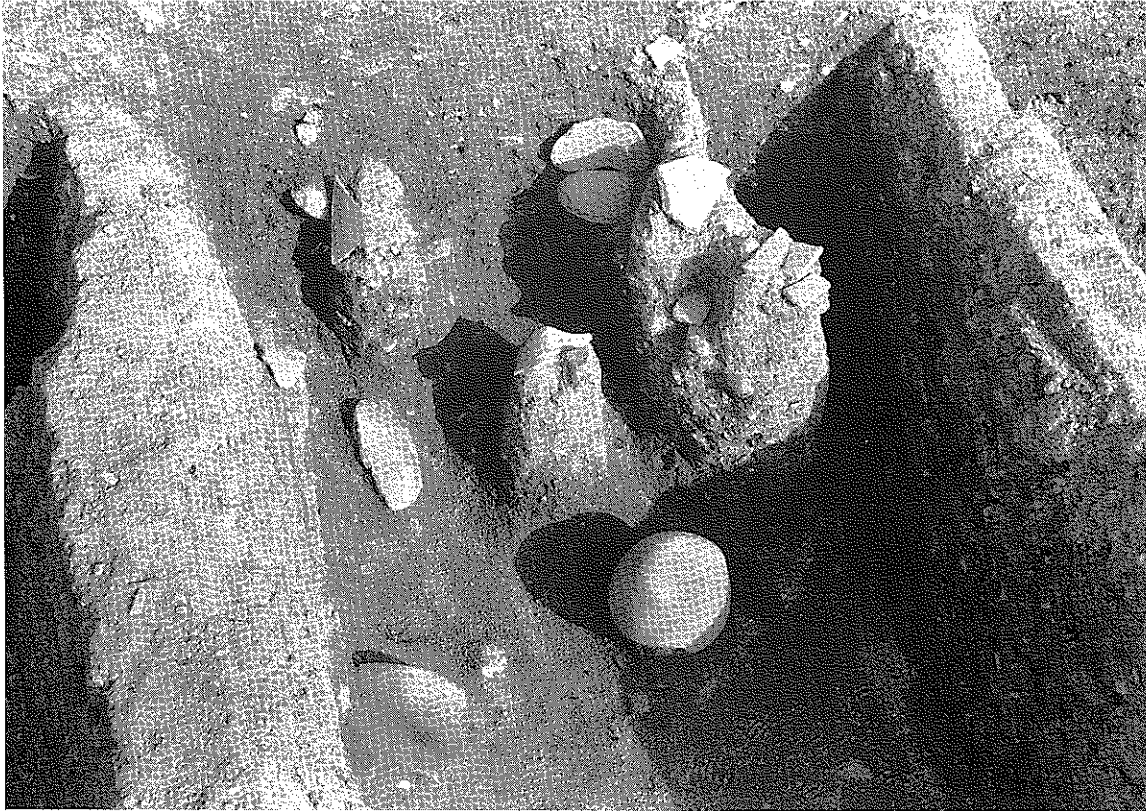
(2) SB02・03全景 (南から)



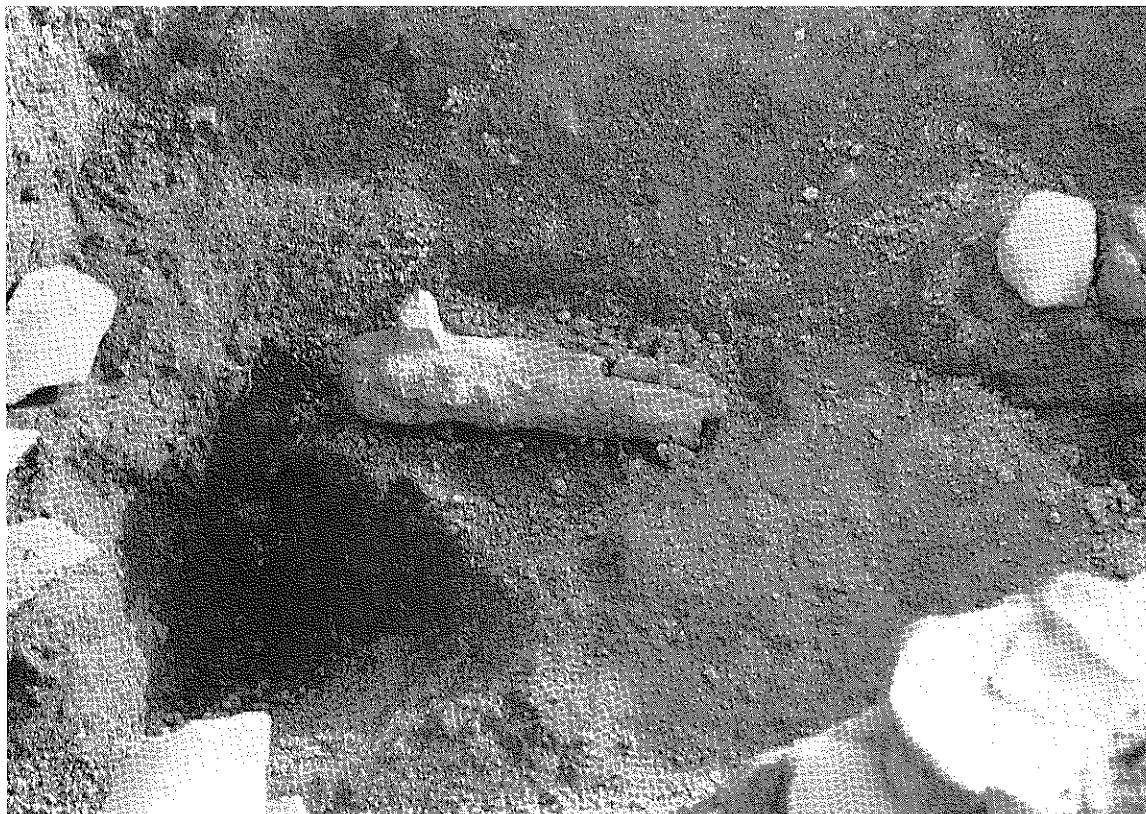
(1) トレンチ北部の遺構 (北から)



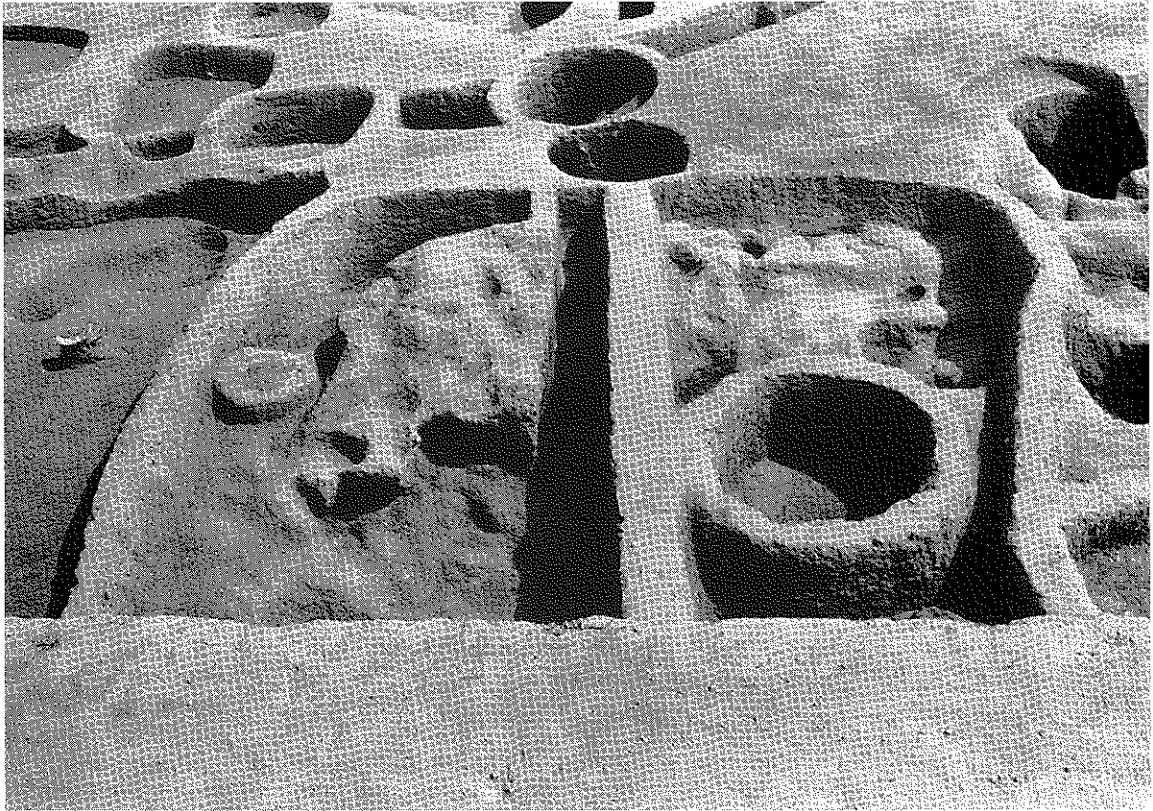
(2) SD13遺物出土状況 (南から)



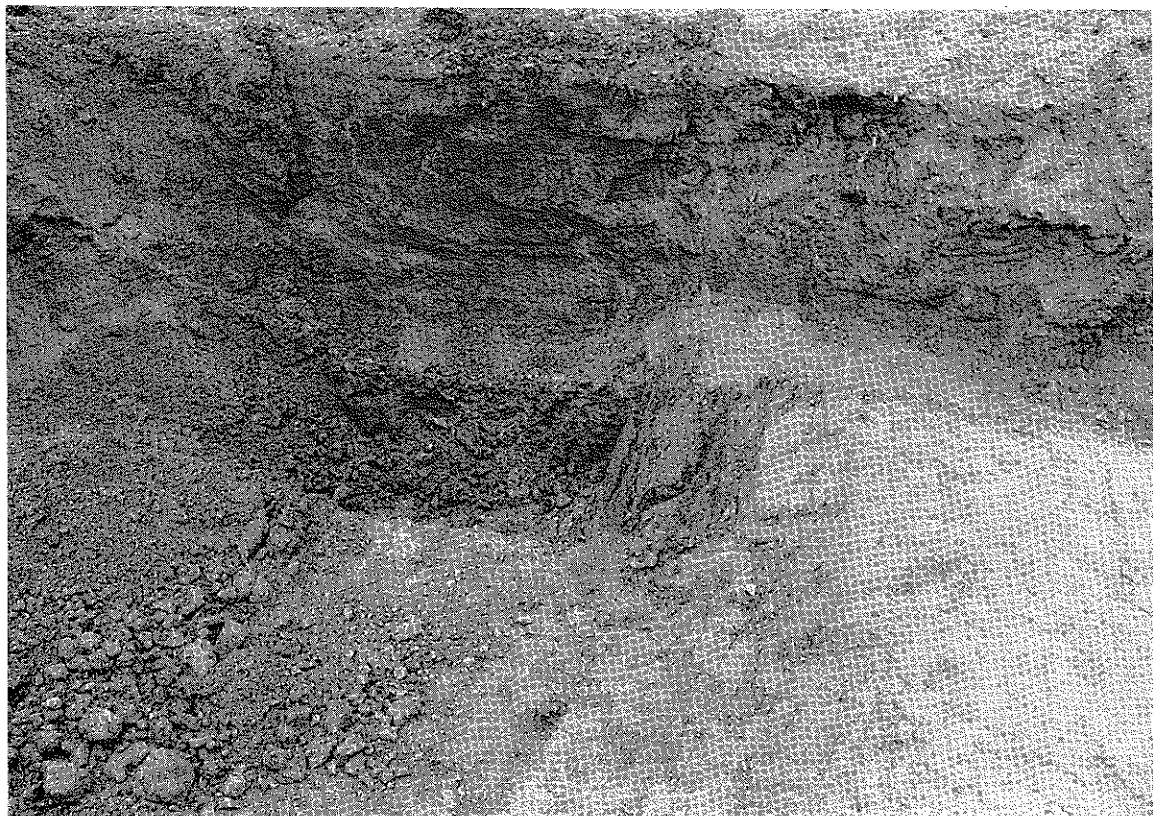
(1) SD04遺物出土状況（西から）



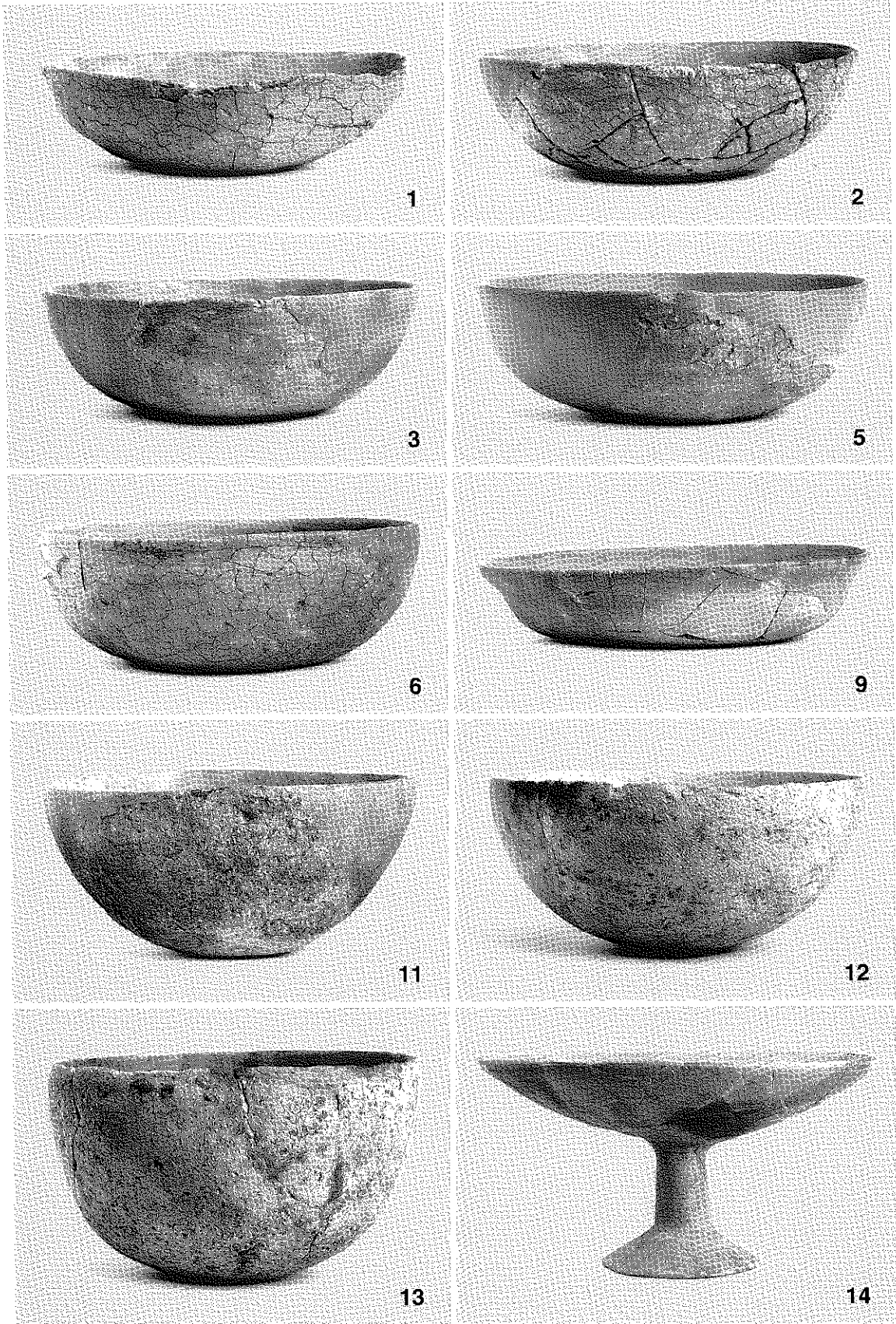
(2) SK24鉄釘出土状況（北から）



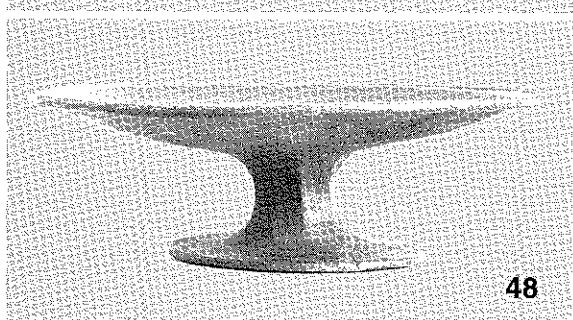
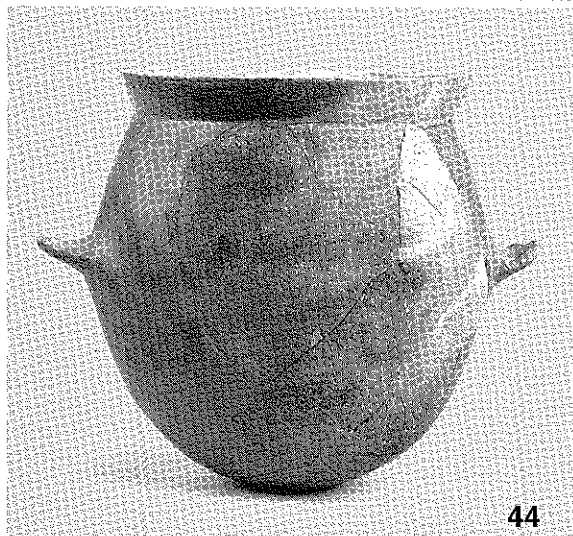
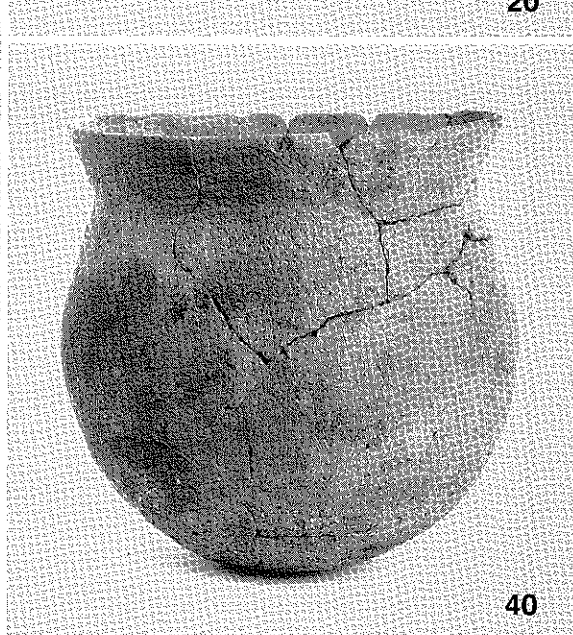
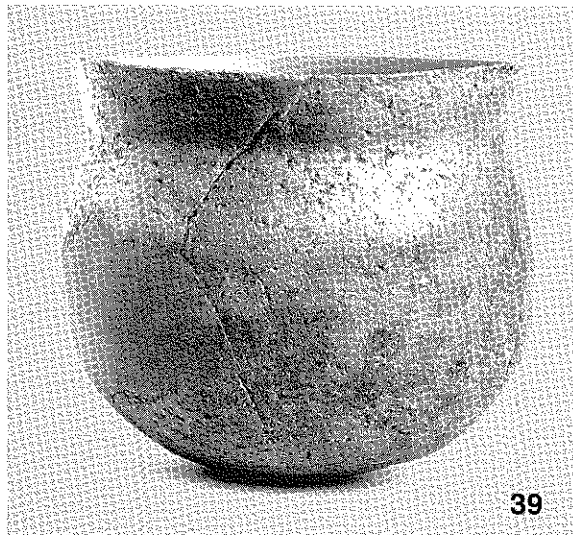
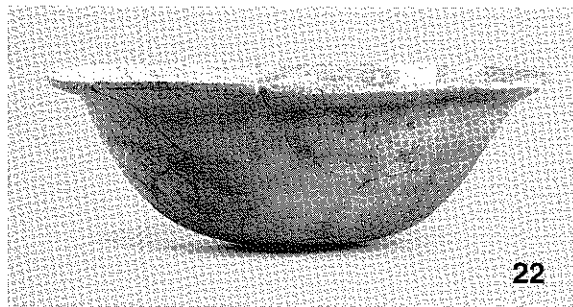
(1) SK06全景 (西から)

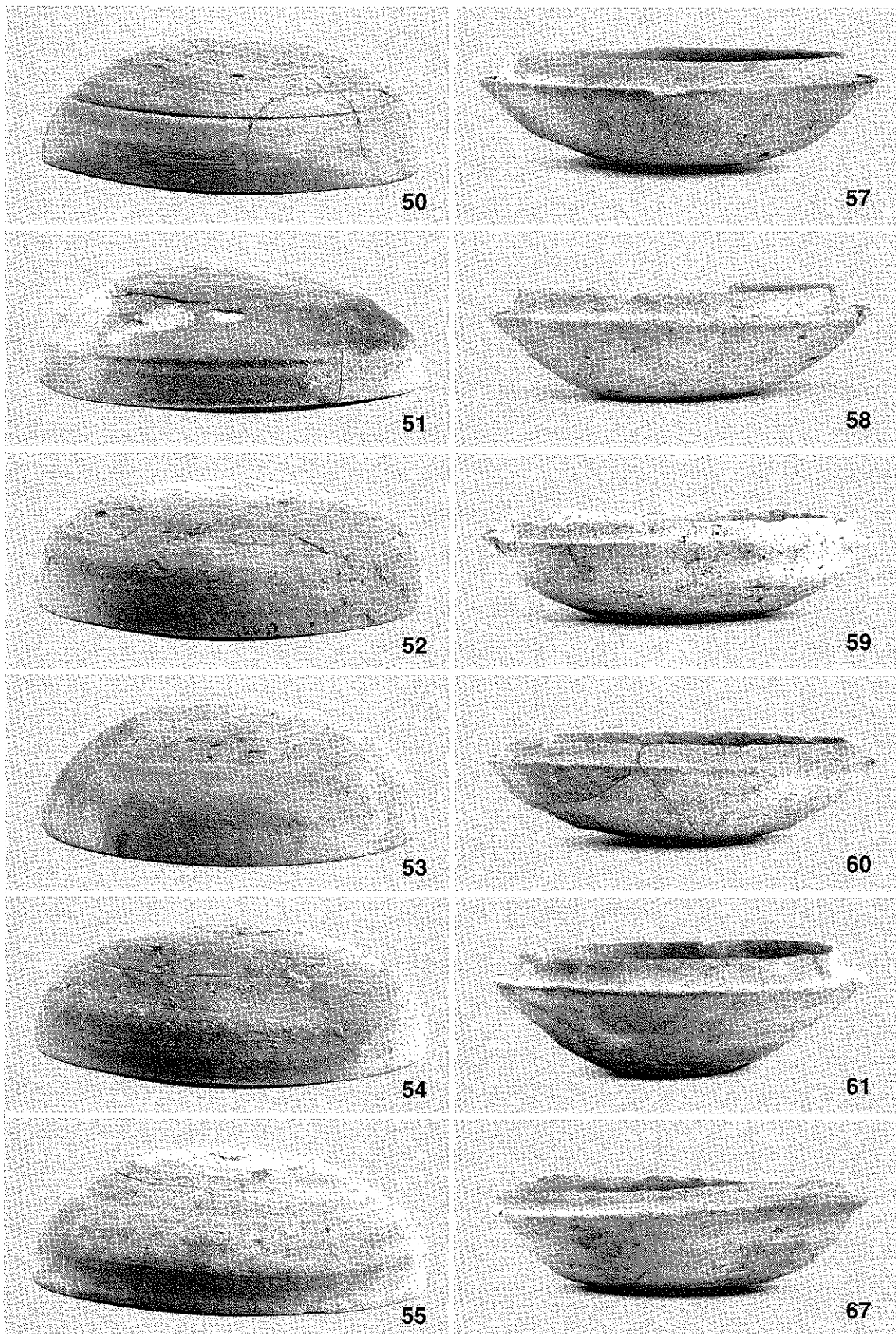


(2) SD15土層断面 (西から)

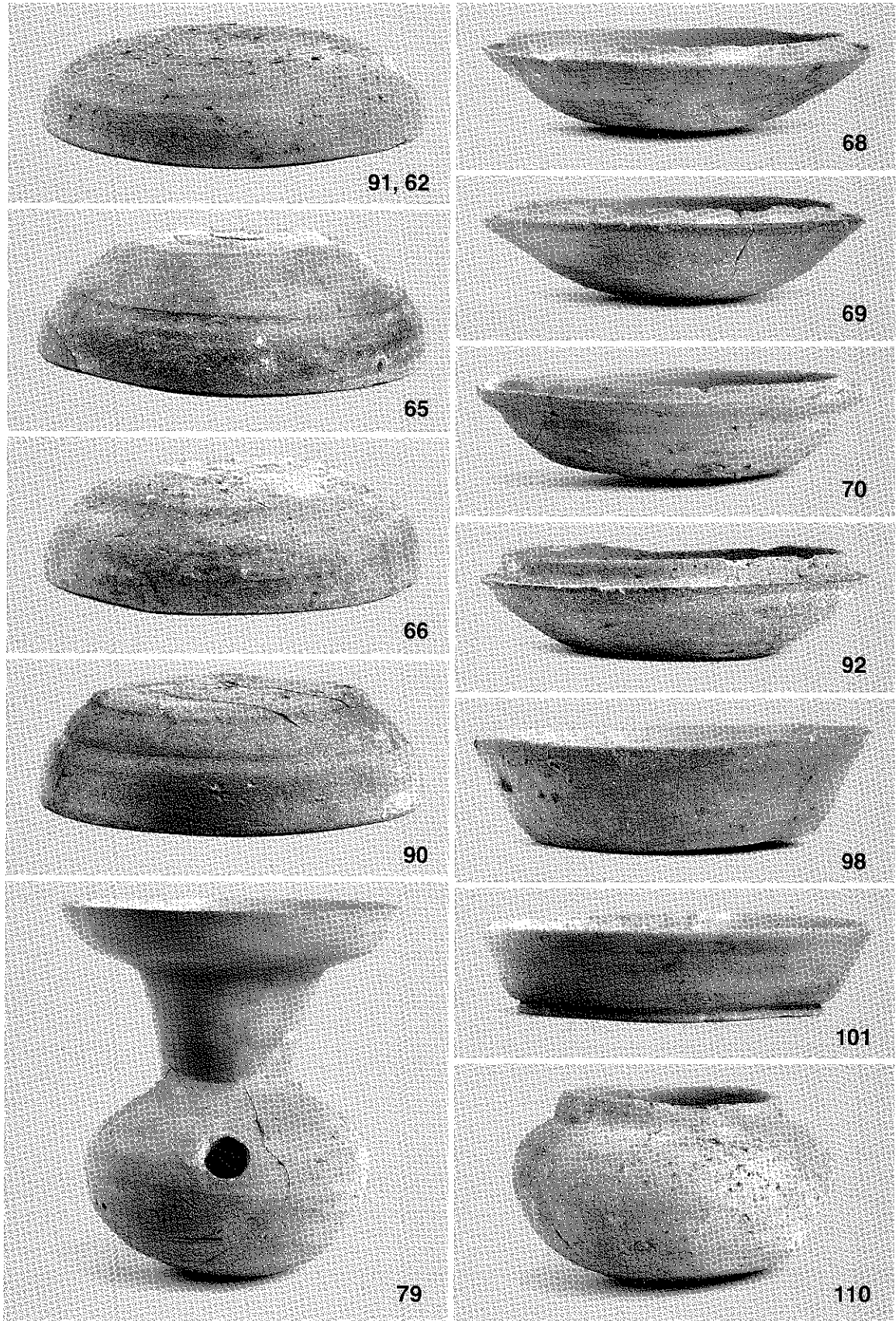


SX01出土土器 (I)

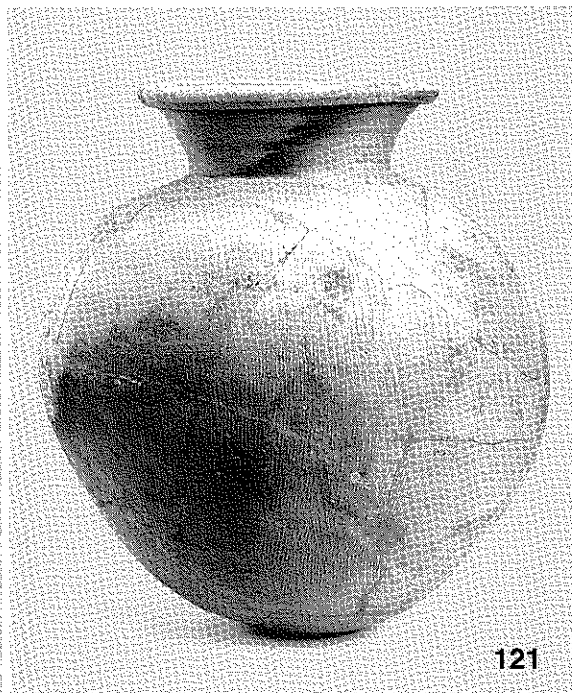
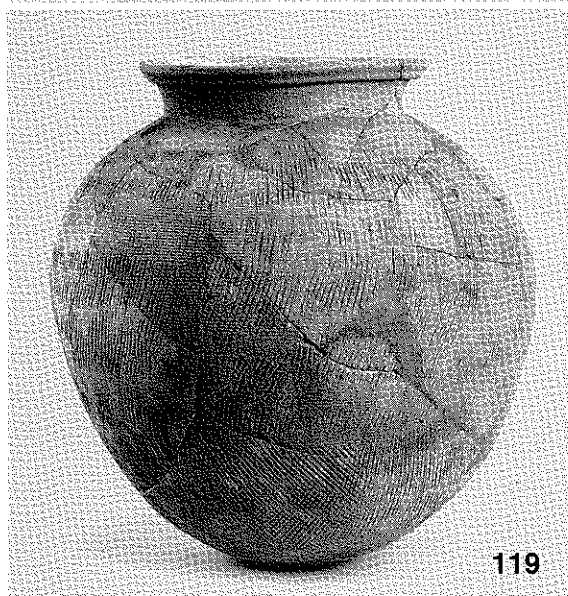
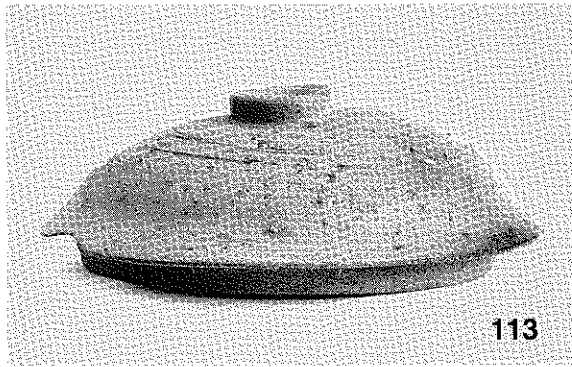
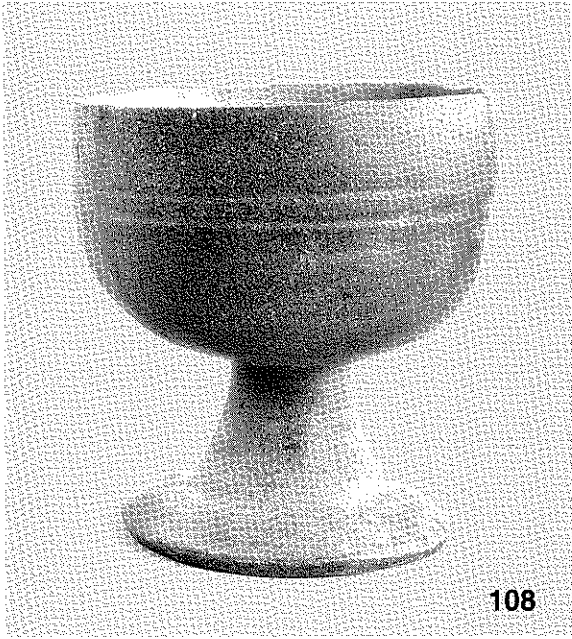


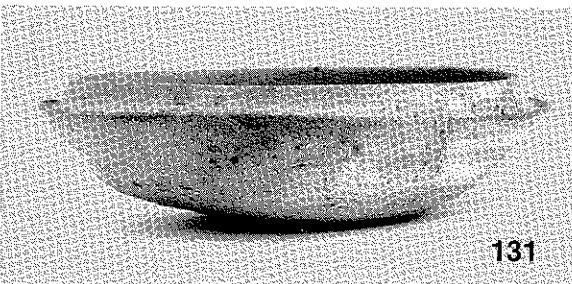
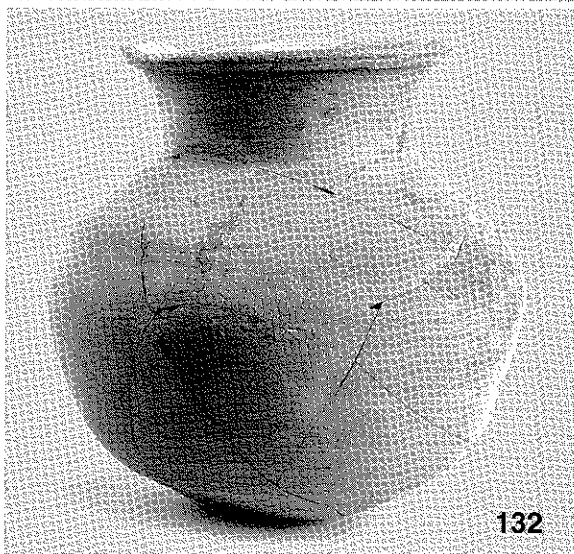
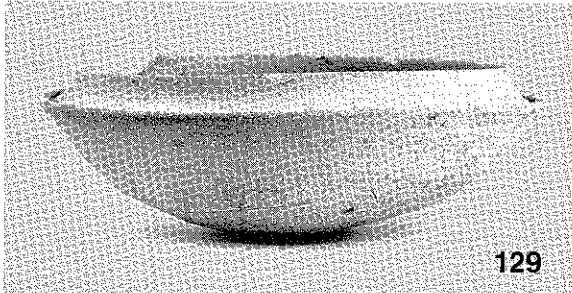
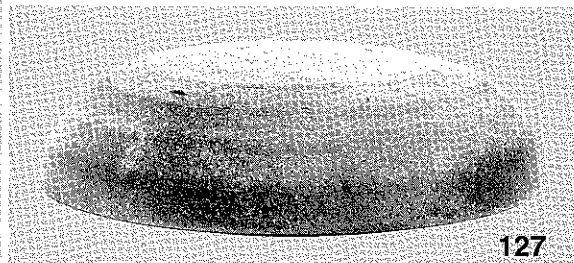
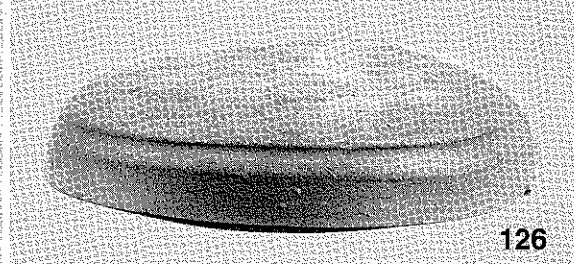
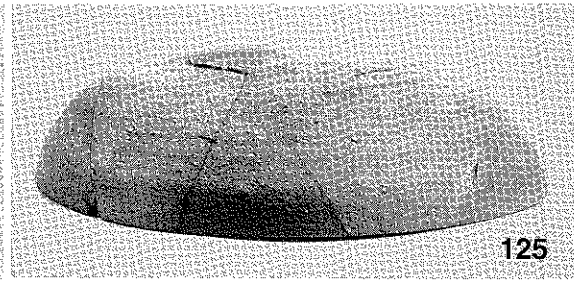


SX01出土土器 (3)

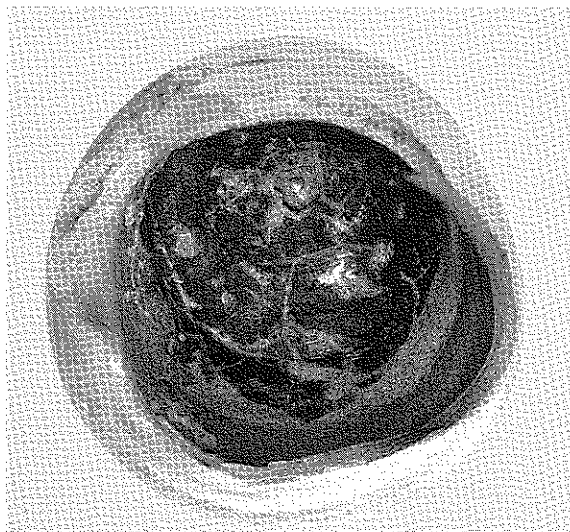
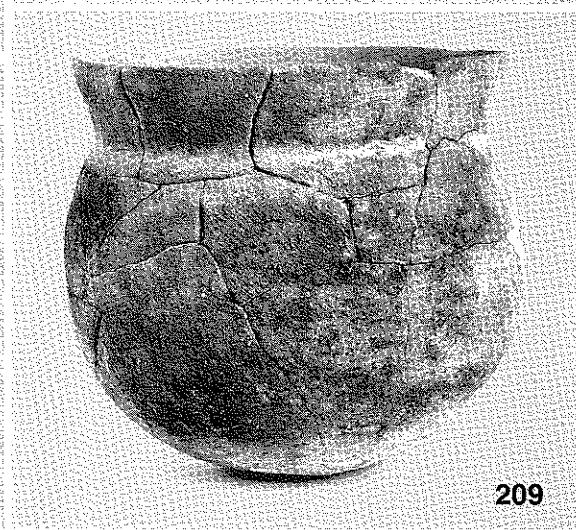
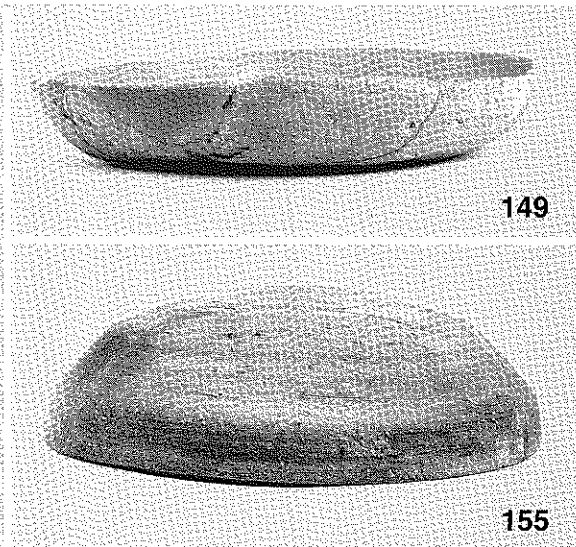
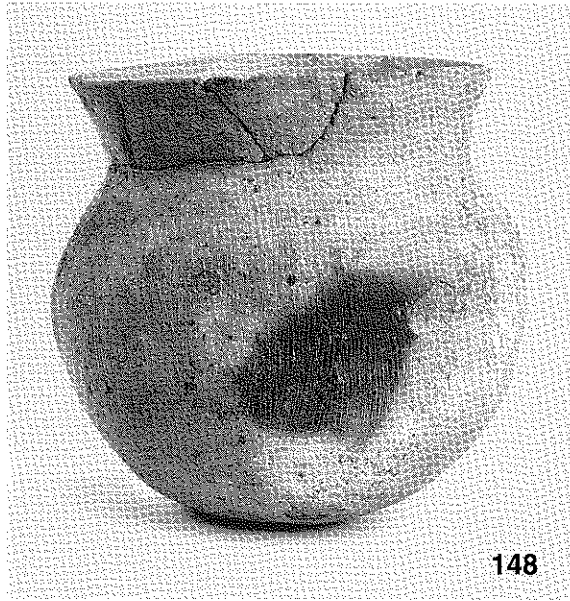


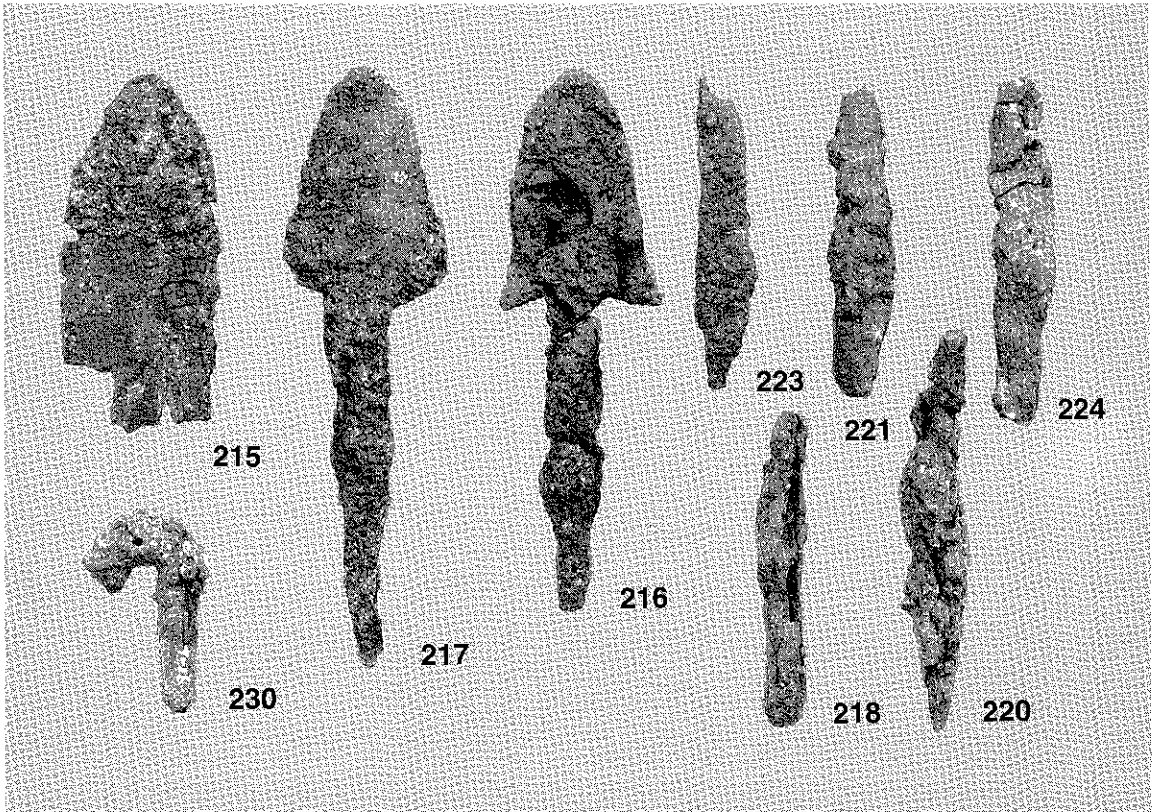
SX01出土土器 (4)



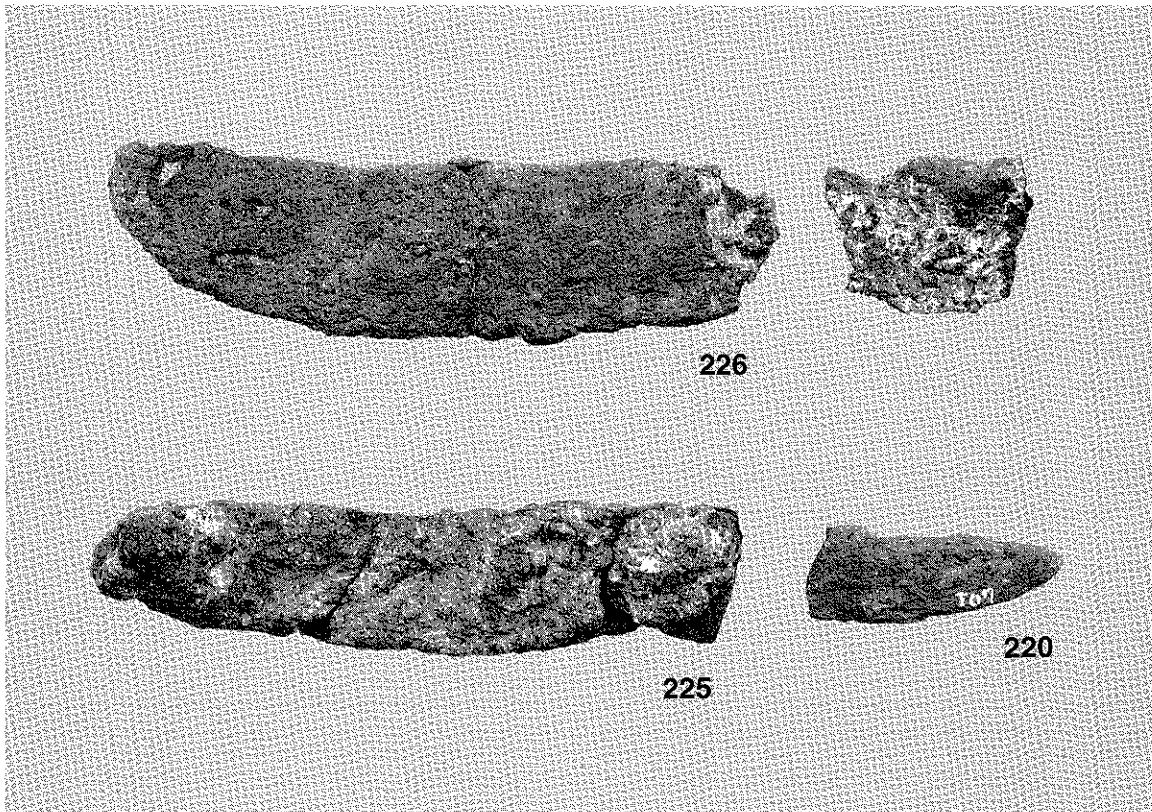


SX01出土円筒埴輪・SK22出土土器

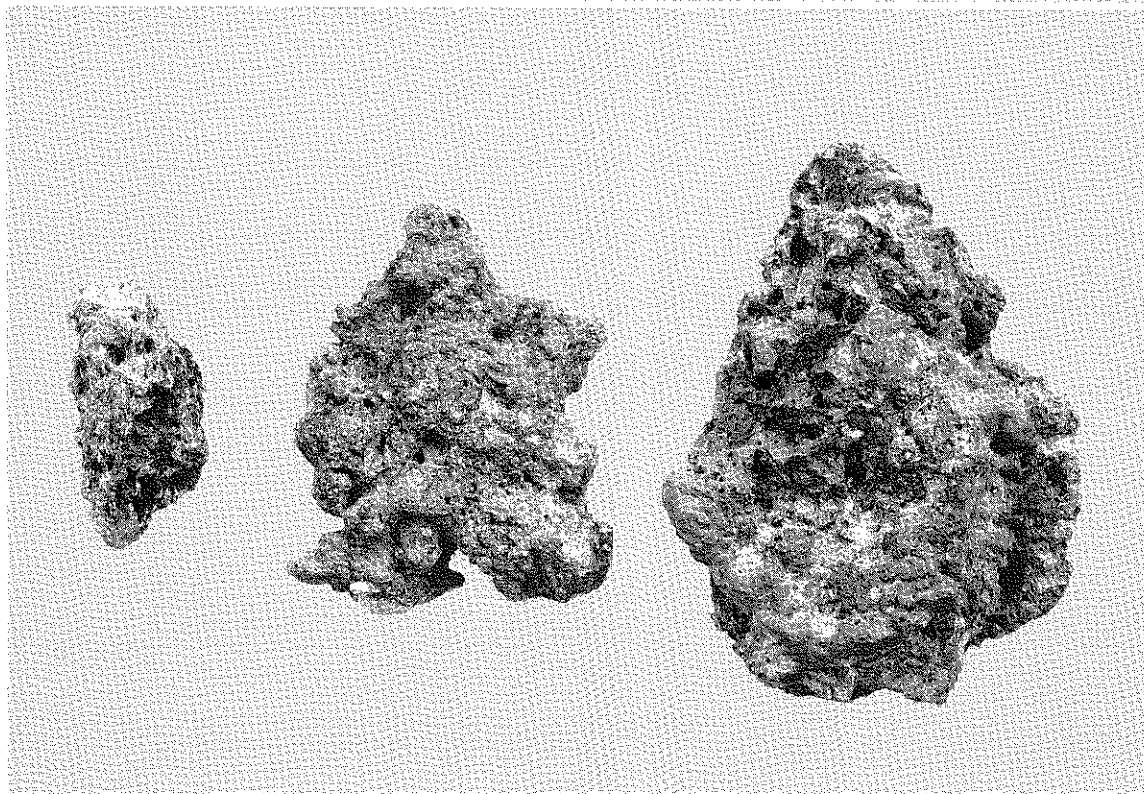




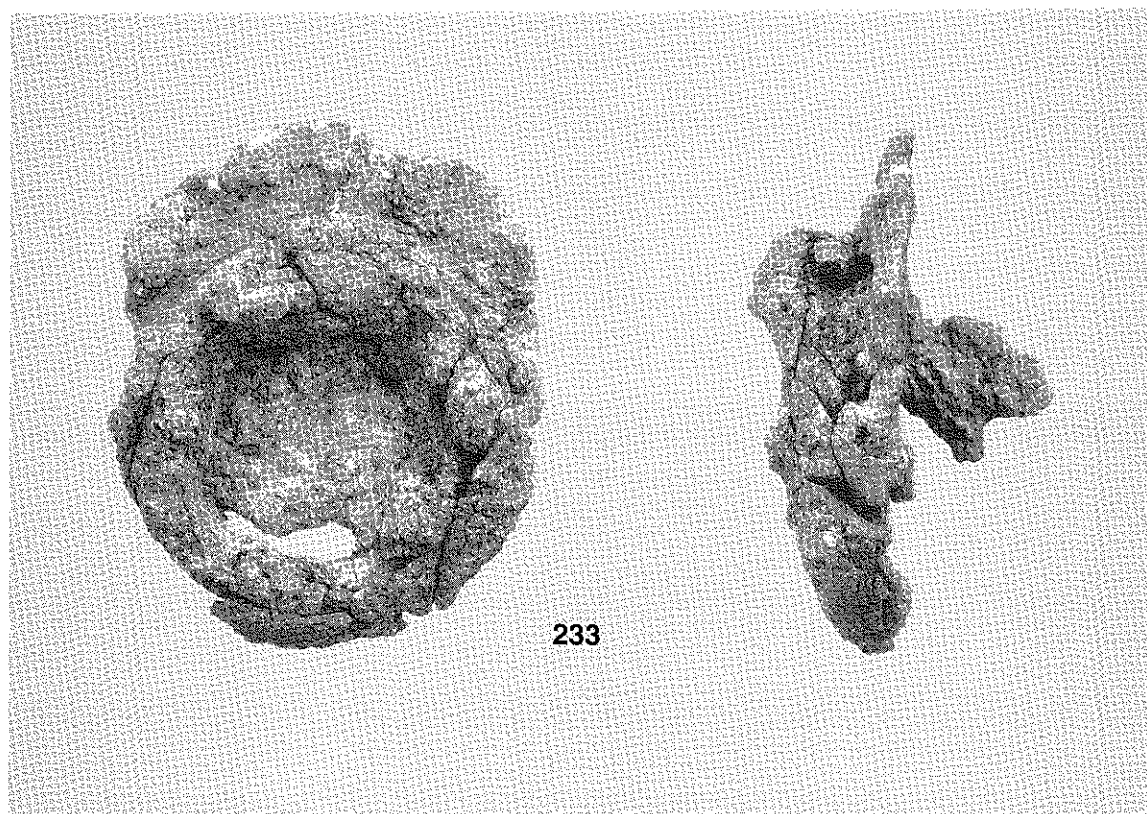
(1) 金属器 (1)



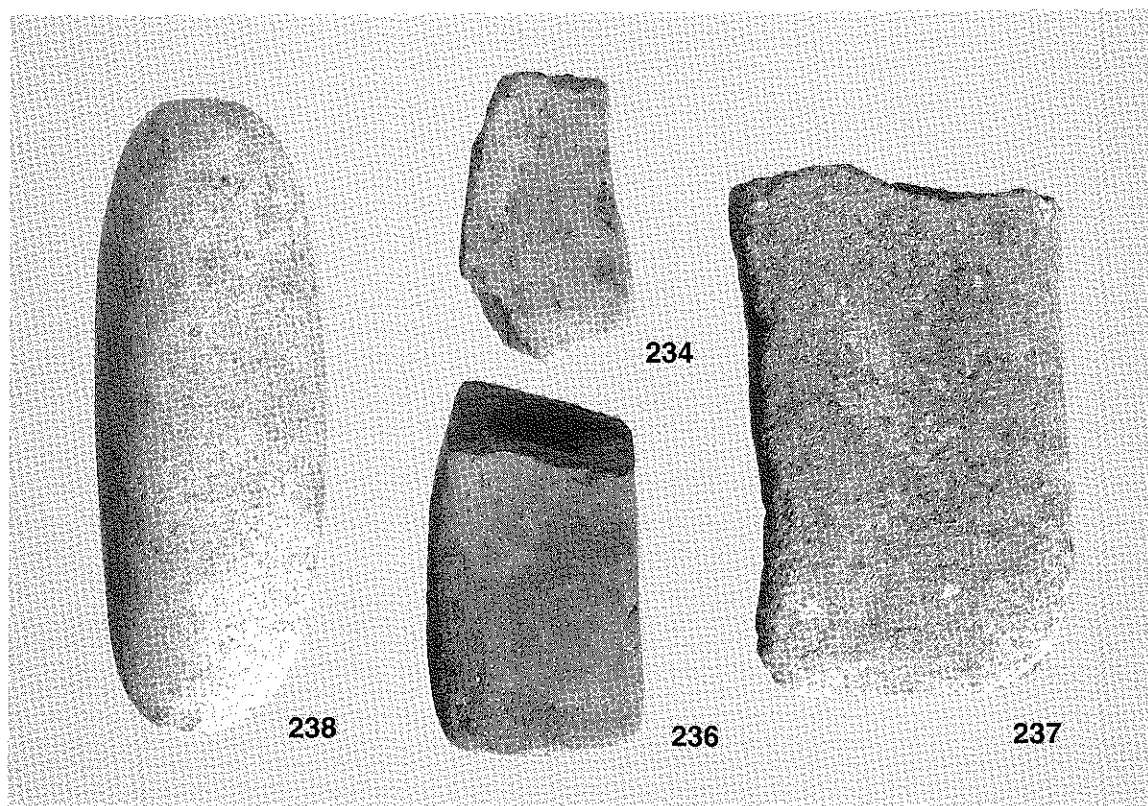
(2) 金属器 (2)



金属器 (3)



(1) 金属器 (4)



(2) 石製品

旦棕遺跡第1次発掘調査概報
宇治市埋蔵文化財発掘調査概報 第28集

発行日 平成7年3月31日

発行 宇治市教育委員会
〒611-8501 宇治市宇治琵琶33番地

製作 河北印刷株式会社
