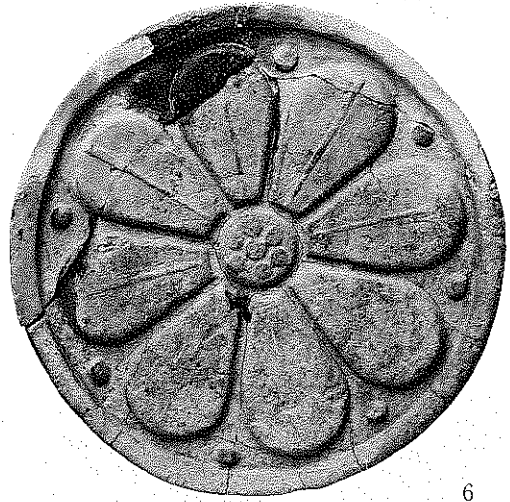


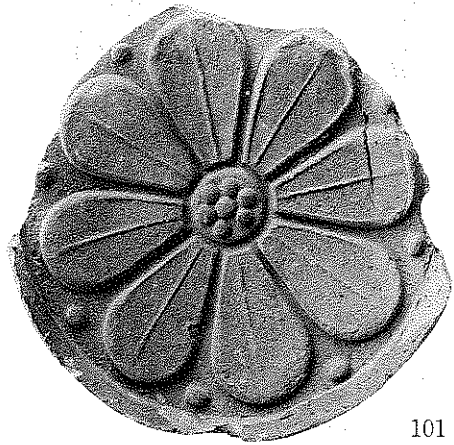
1



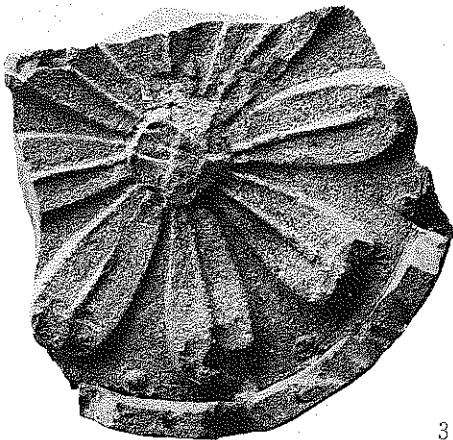
6



2



101

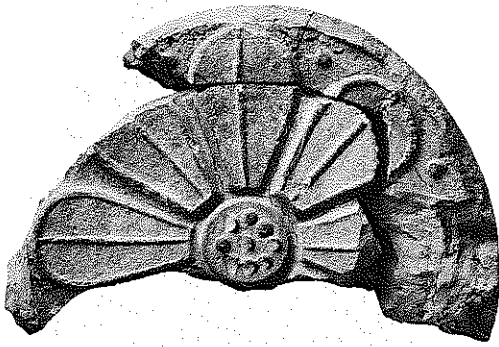


3

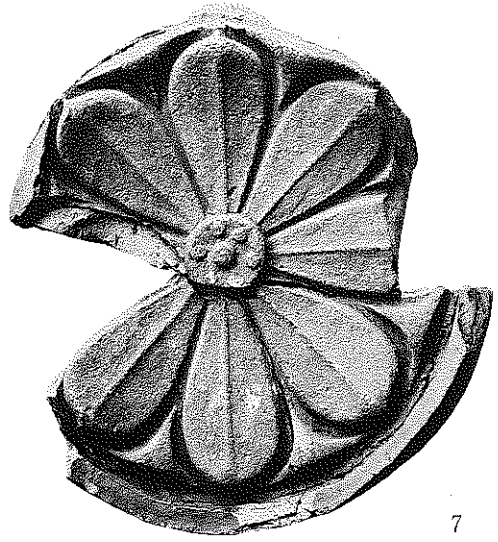


5

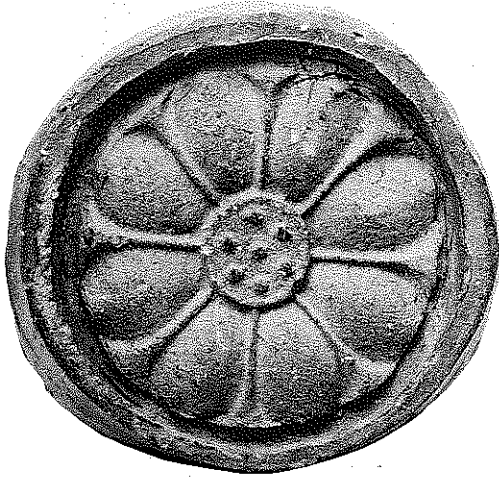
軒丸瓦(1) (A₁型式:1, A₂型式:2・3, B型式:6・101, B型式断面:5)



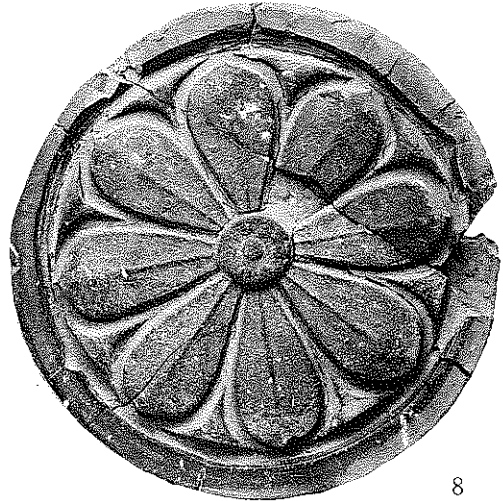
10



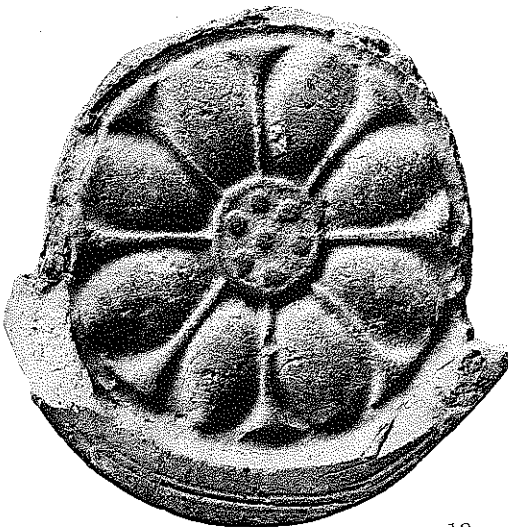
7



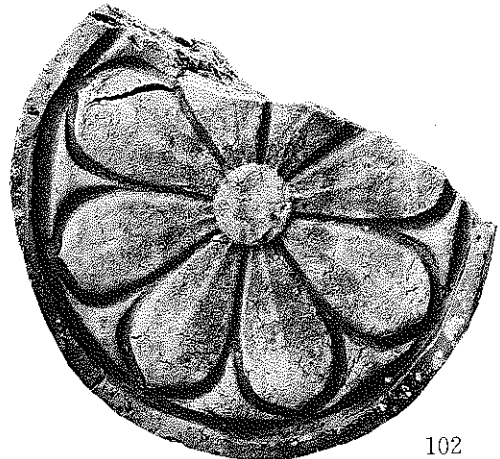
11



8



12



102

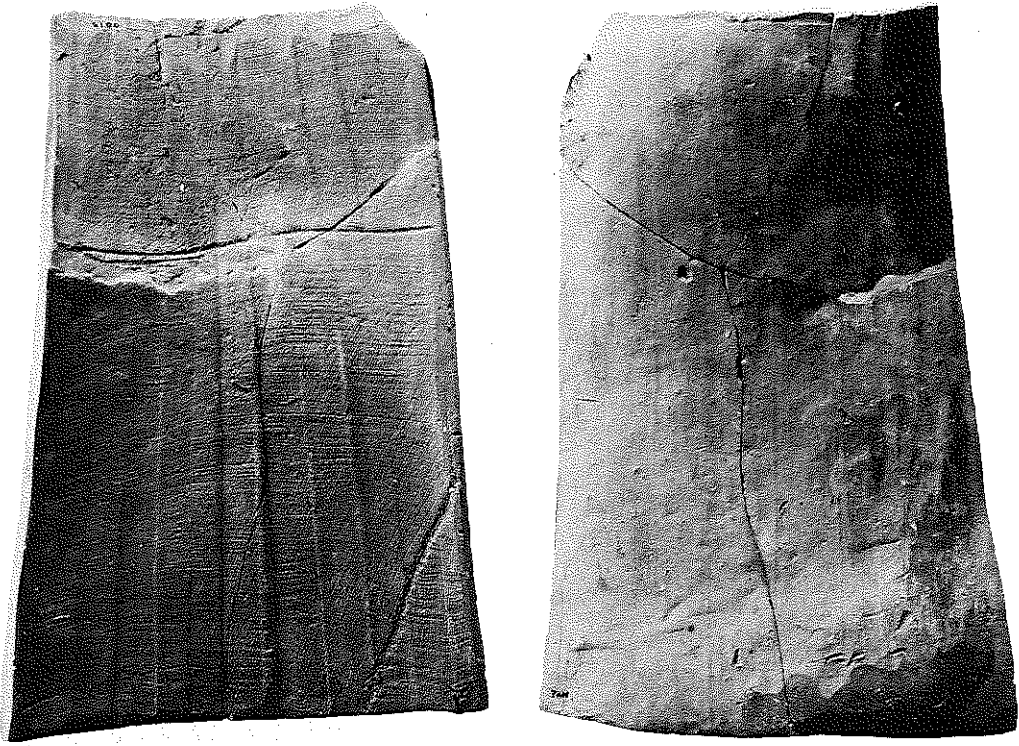
軒丸瓦(2) (C型式:10, D型式:7・8・102, E型式:11・12)



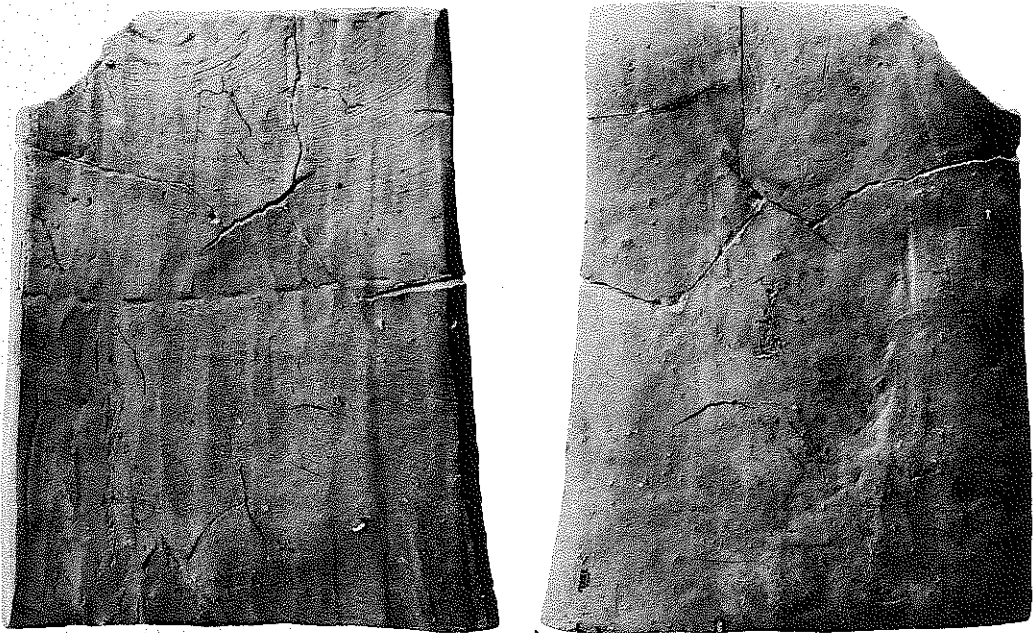
軒丸瓦B型式



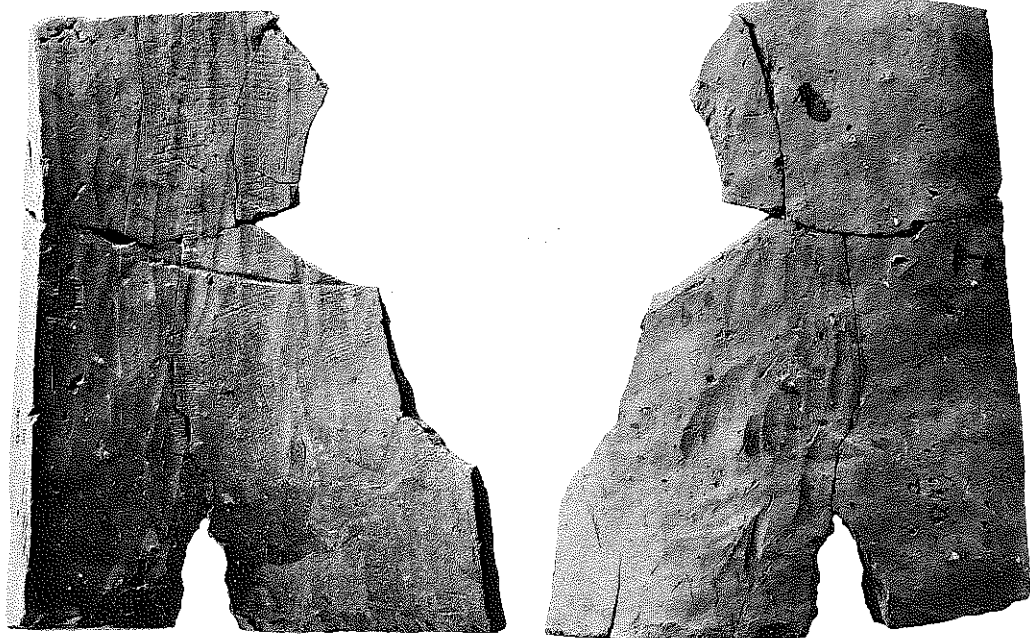
軒丸瓦E型式



13



15

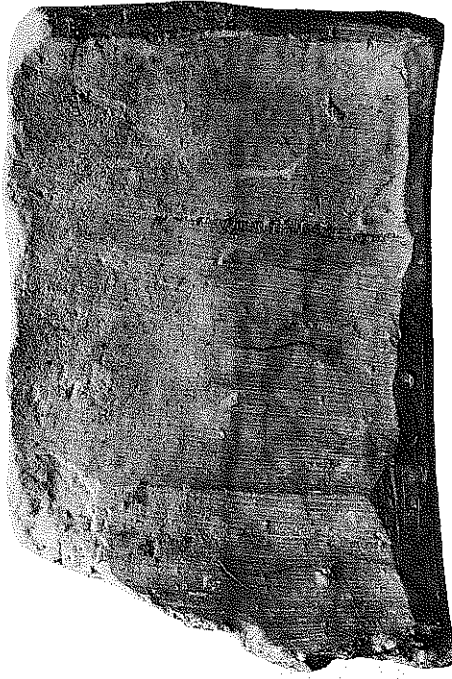


16



17

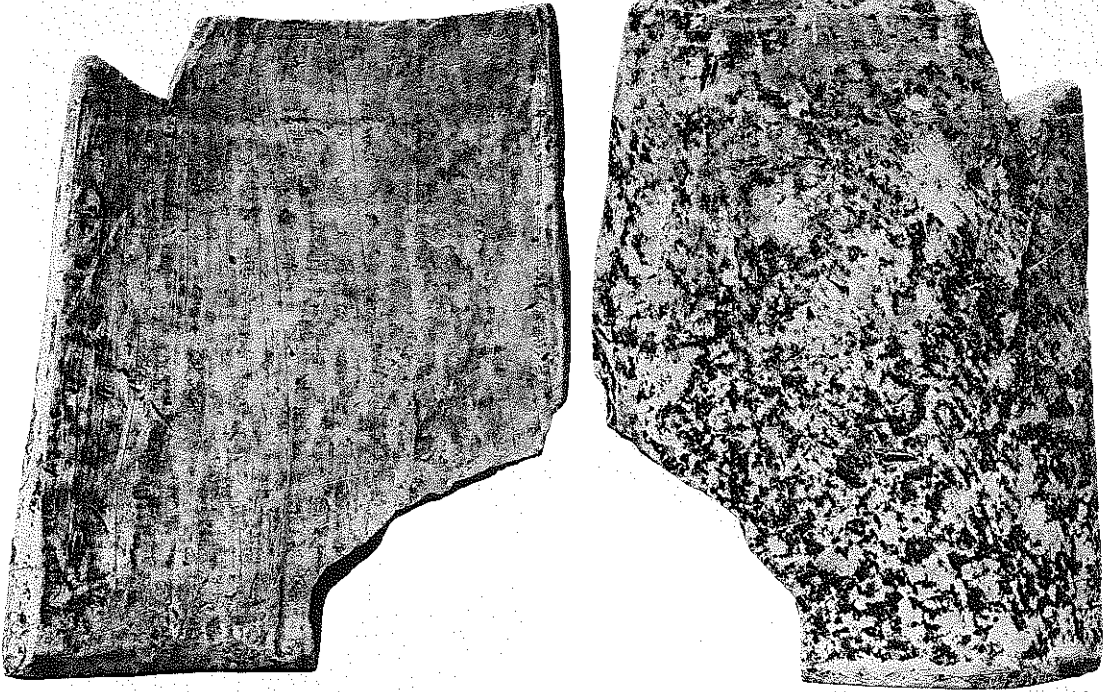
20



21



平瓦(3) (IV類:20, 凸面平行タタキ:21)

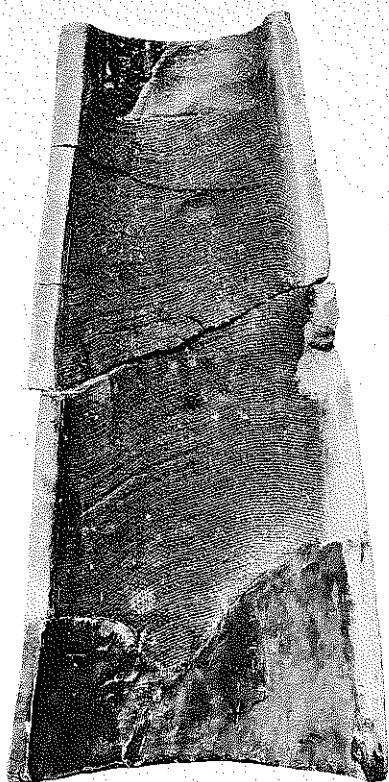


19



22

平瓦(4) (凸面斜格子タタキ：19, 板土板巻き付け痕：22)



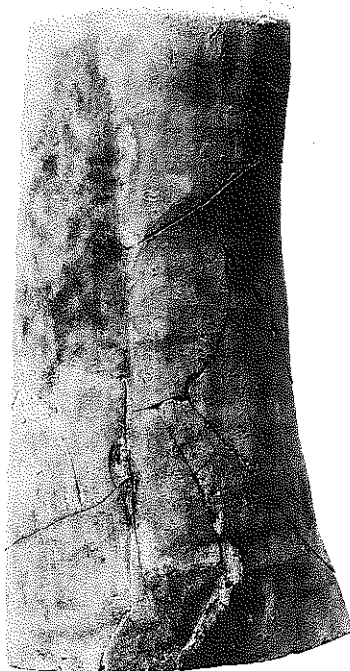
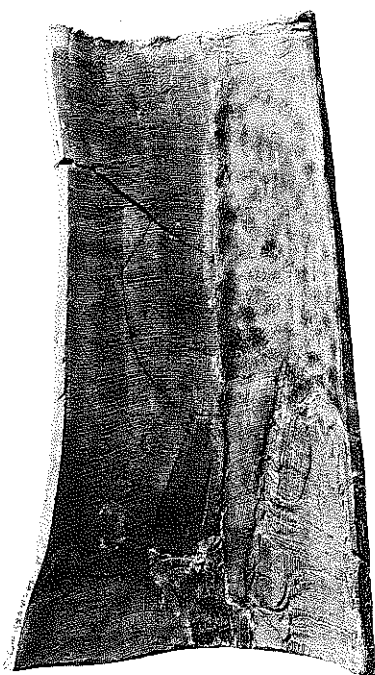
30



34



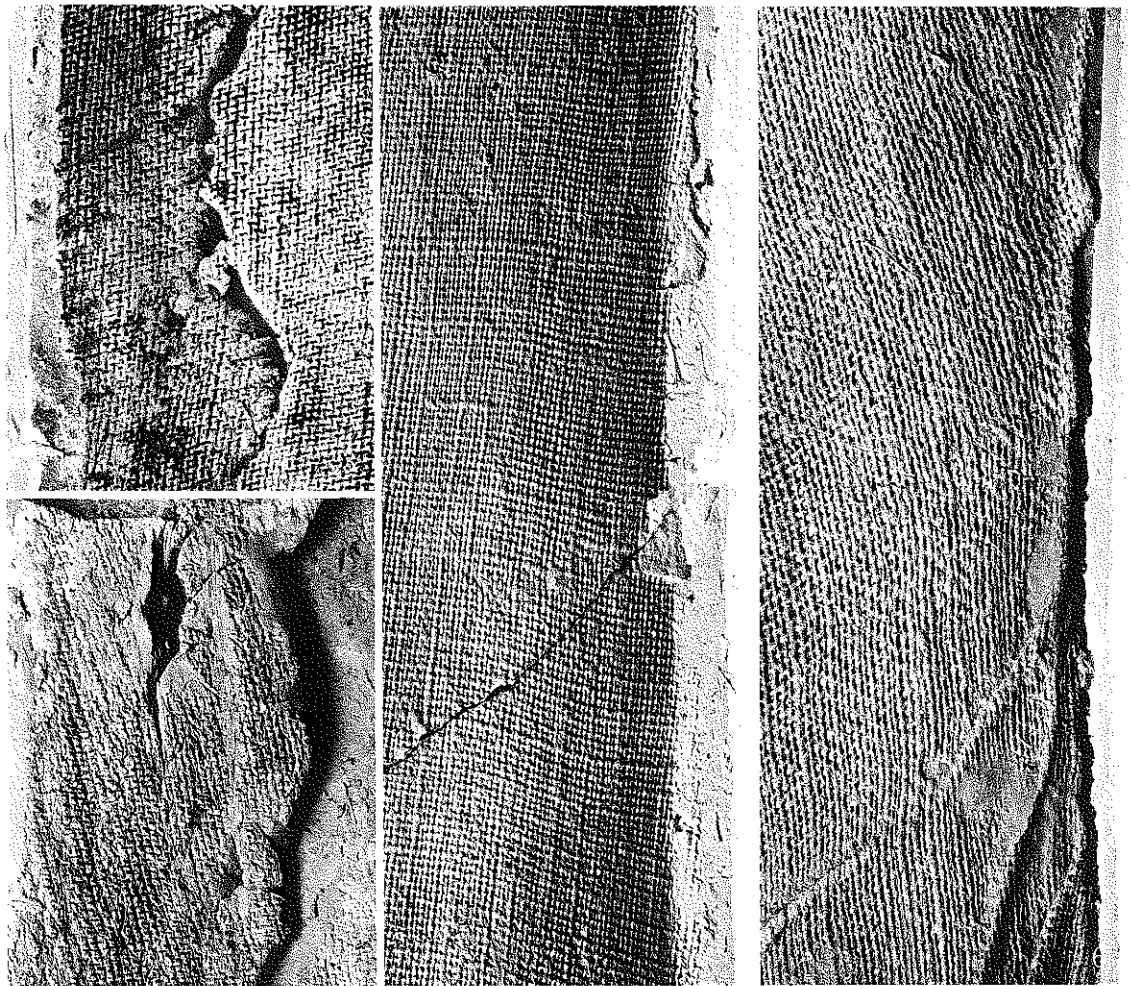
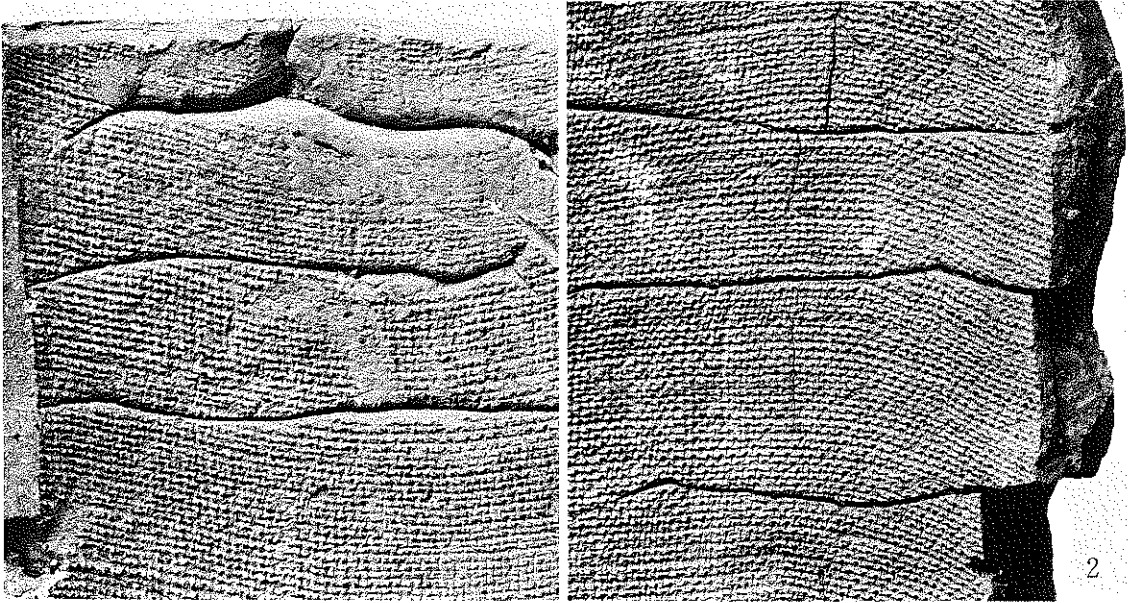
28



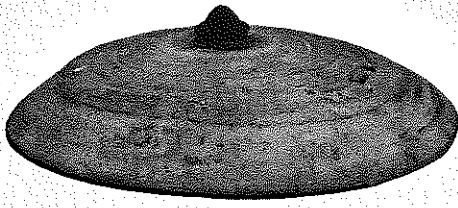
24

隼上り瓦窯跡

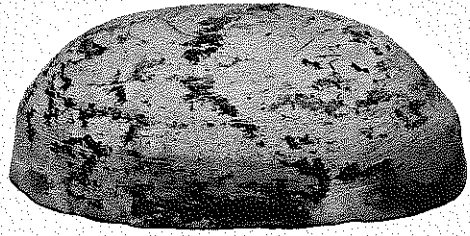
図版第八七 遺物



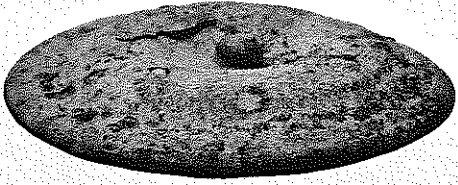
丸瓦部分（粘土紐痕跡：1・2，粘土板痕跡：3・4，分割界線：5・6）



4



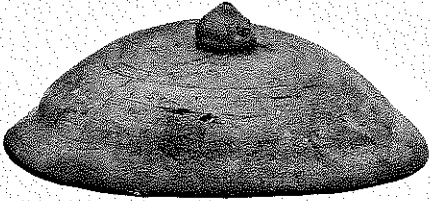
3



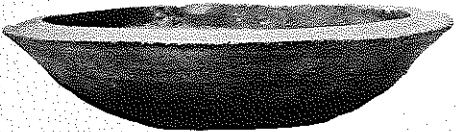
5



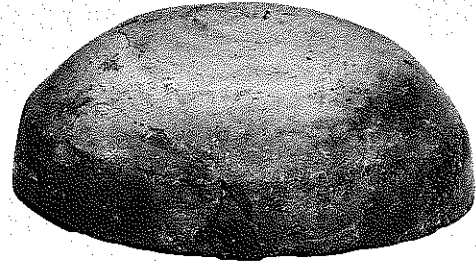
1



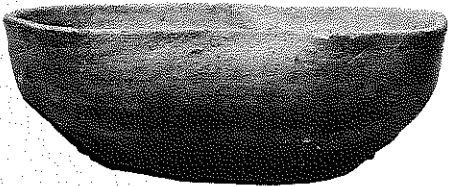
6



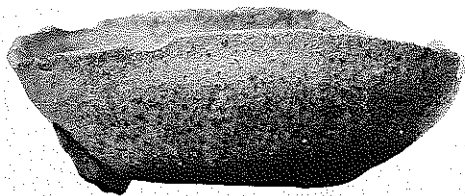
8



2



10



9



7

土器(1) (1号窯最終床面)



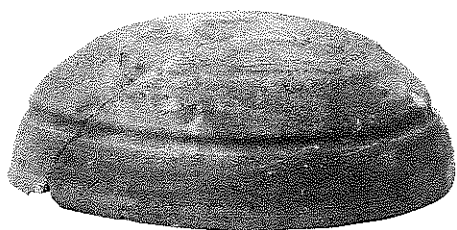
11



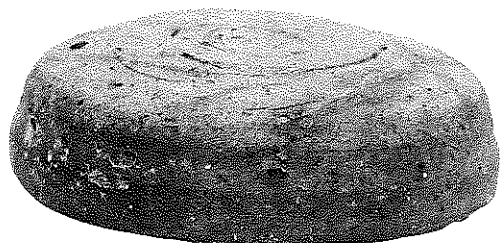
12



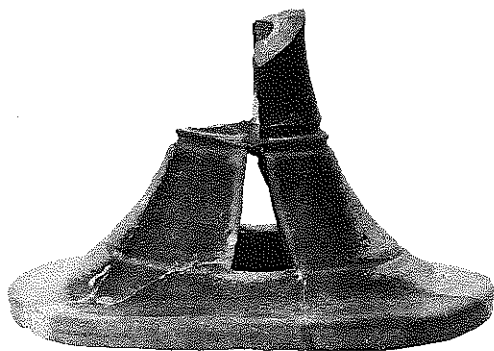
13



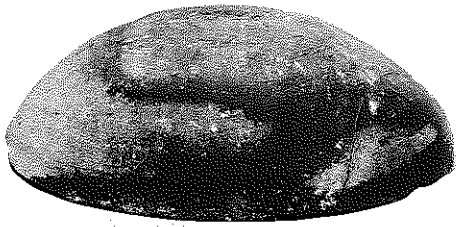
22



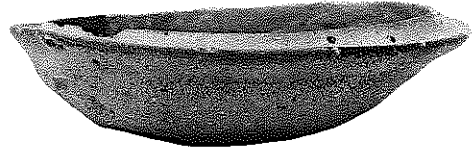
25



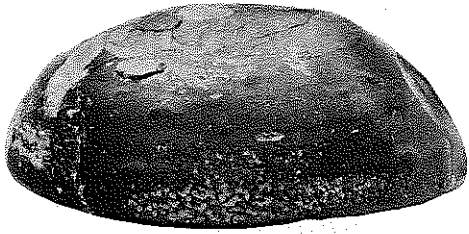
68



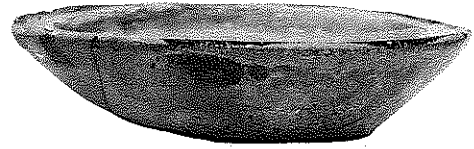
76



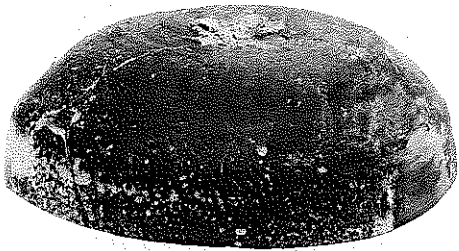
84



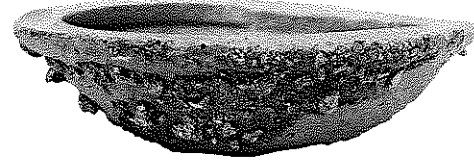
78



85



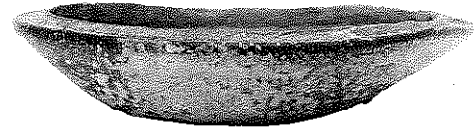
80



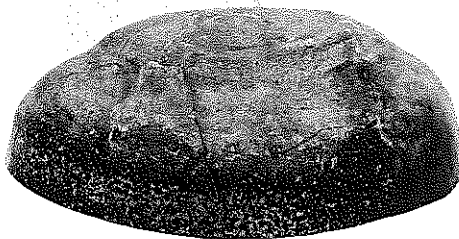
88



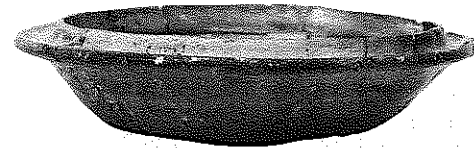
74



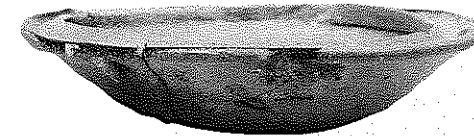
86



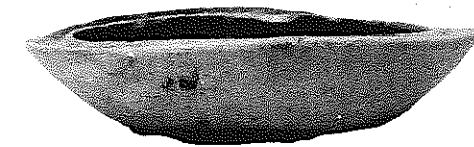
82



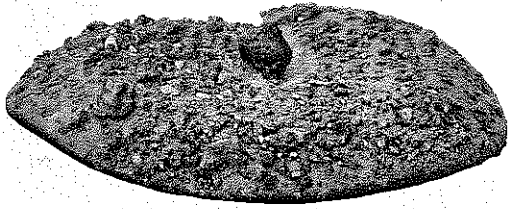
92



89



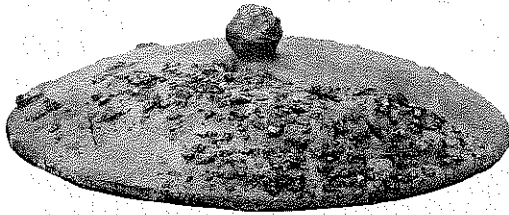
90



94



100



95



97



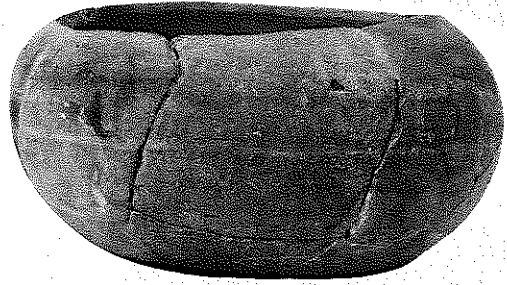
99



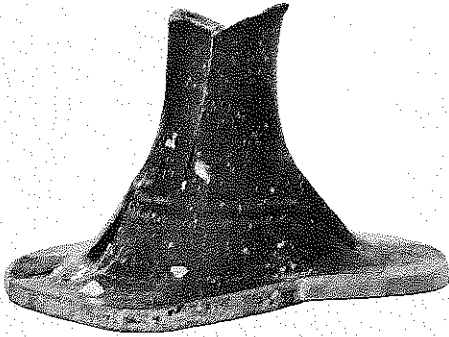
98



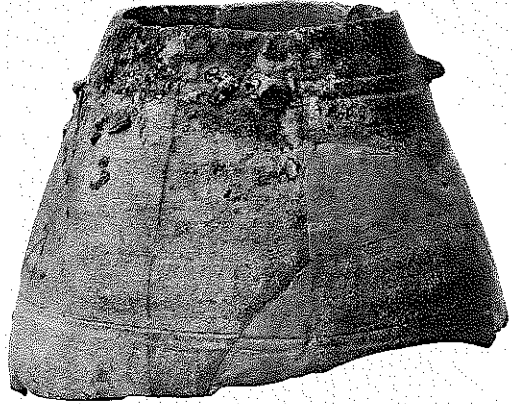
120



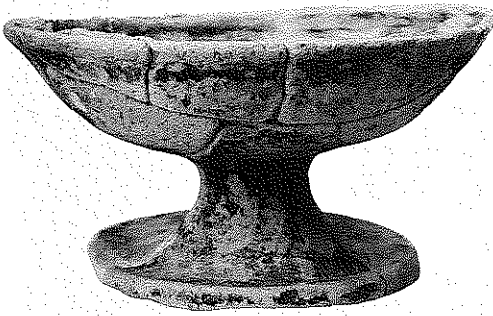
199



181



201



171



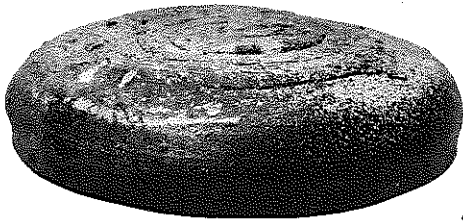
176



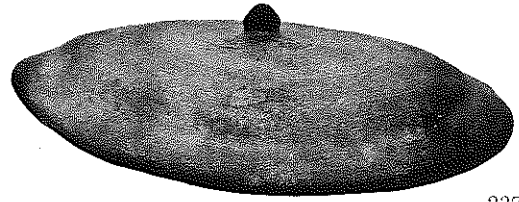
182

隼上り瓦窯跡

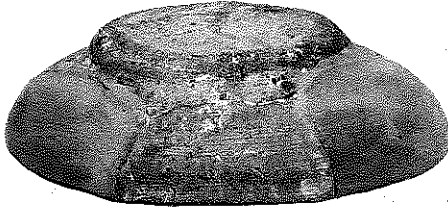
図版第九三
遺物



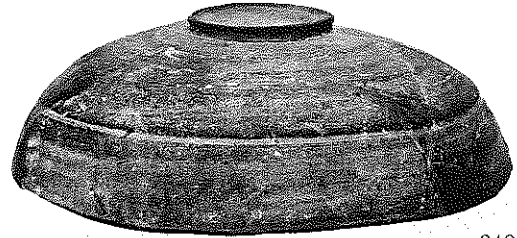
214



237



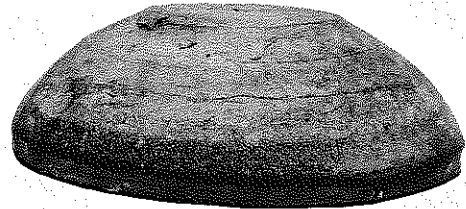
216



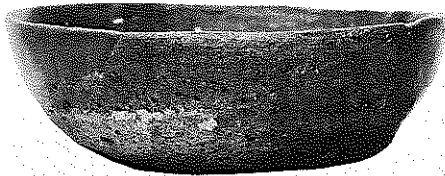
242



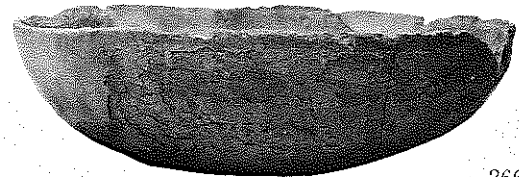
218



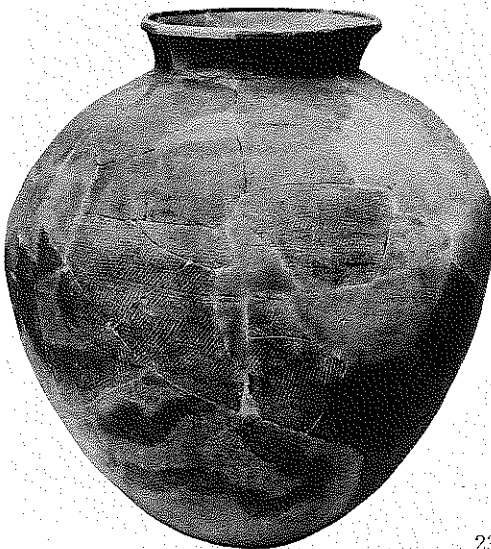
245



223



266

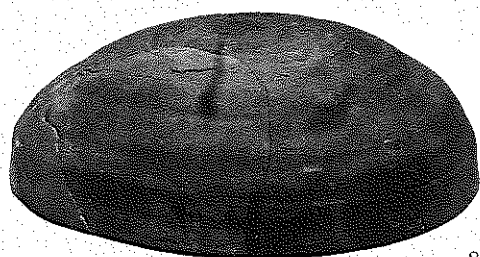


233



267

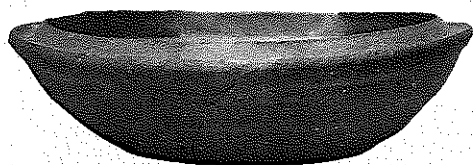
土器(6) (3号窯最終床面：214・216・218・223, 3号窯灰原：233, 工房跡 第3トレンチS K01：237・242, S D02：245, S X18：266・267)



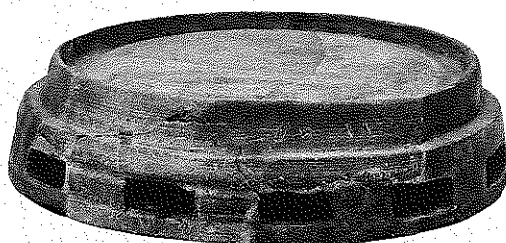
268



273



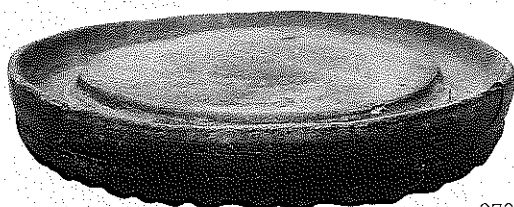
269



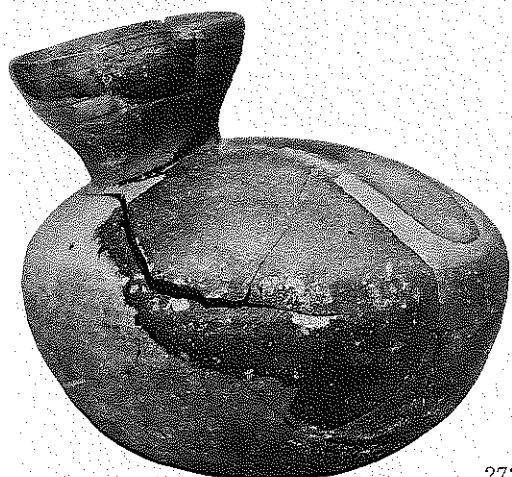
275



270



279



272



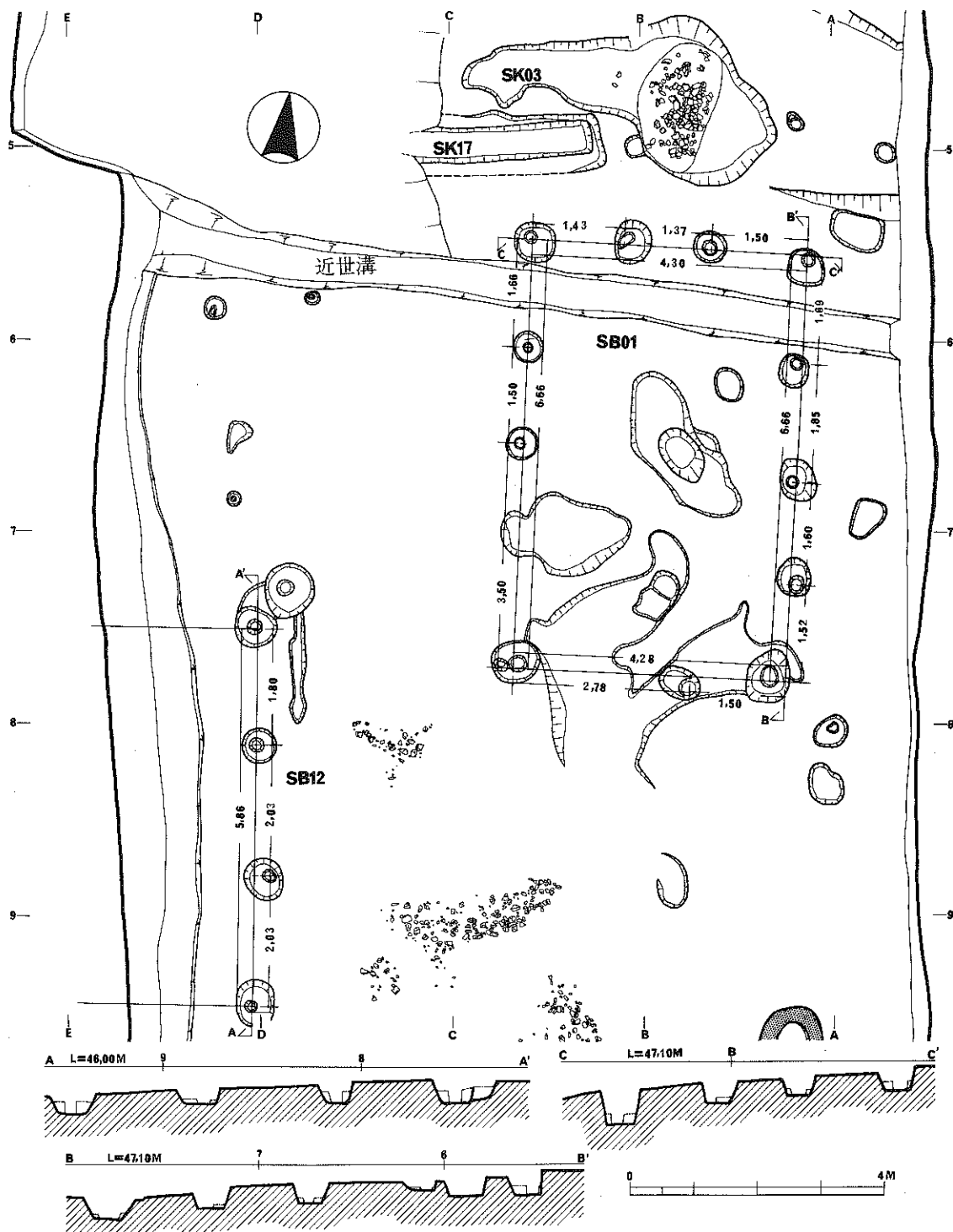
283



284

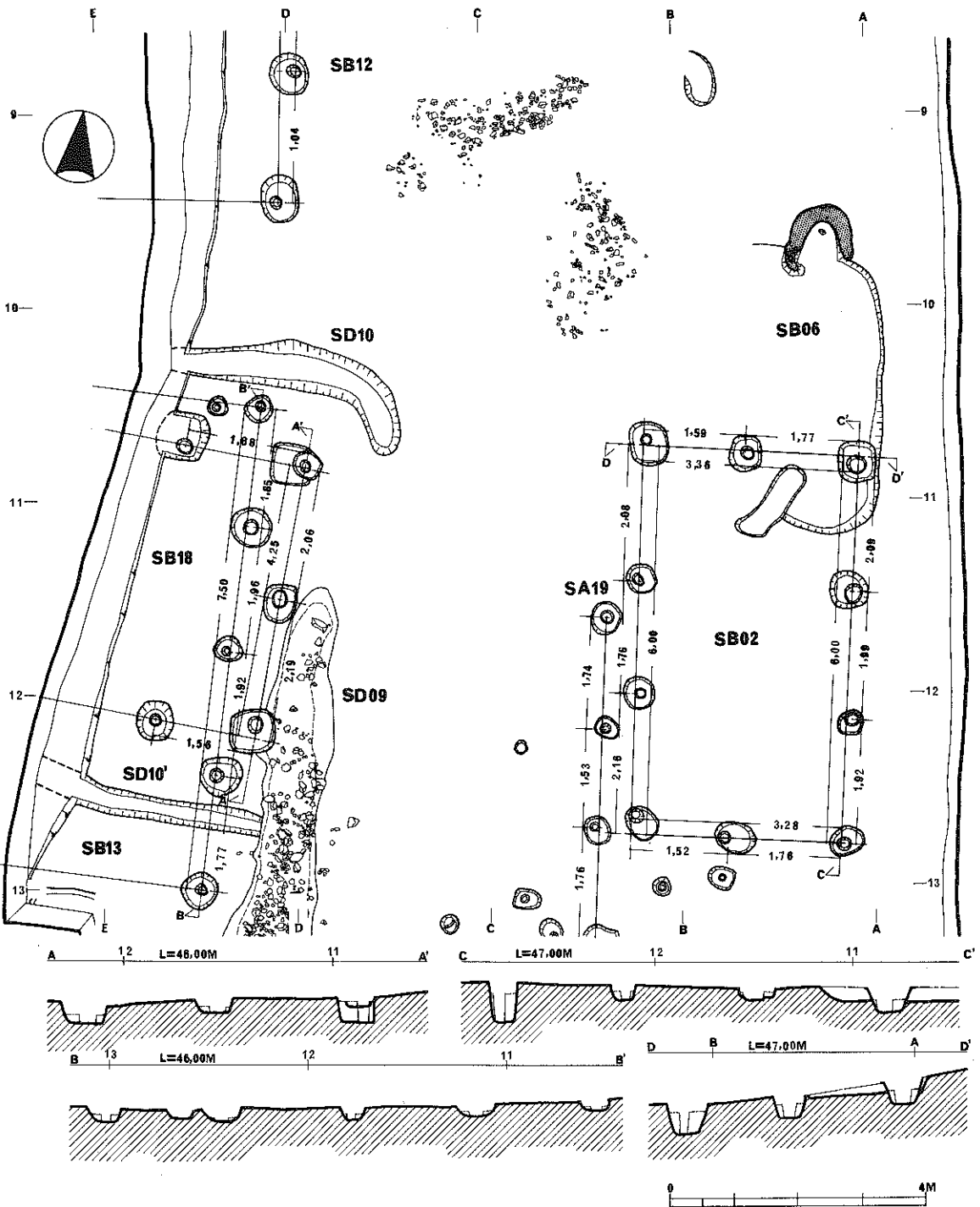
隼上り遺跡

図版第九五 第11トレンチ遺構実測図(1)



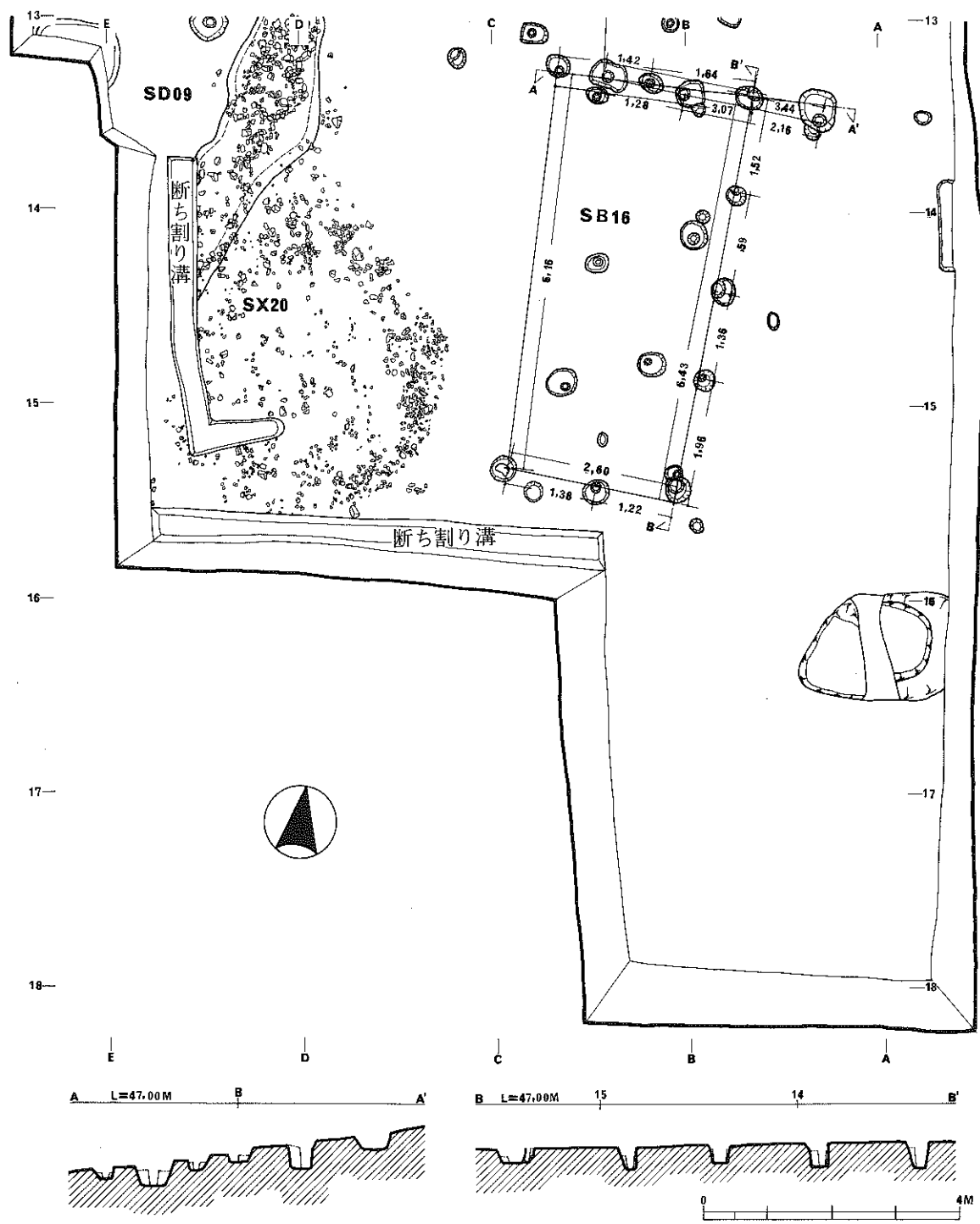
隼上り遺跡

図版第九六 第11トレンチ遺構実測図(2)



隼 上 り 遺 跡

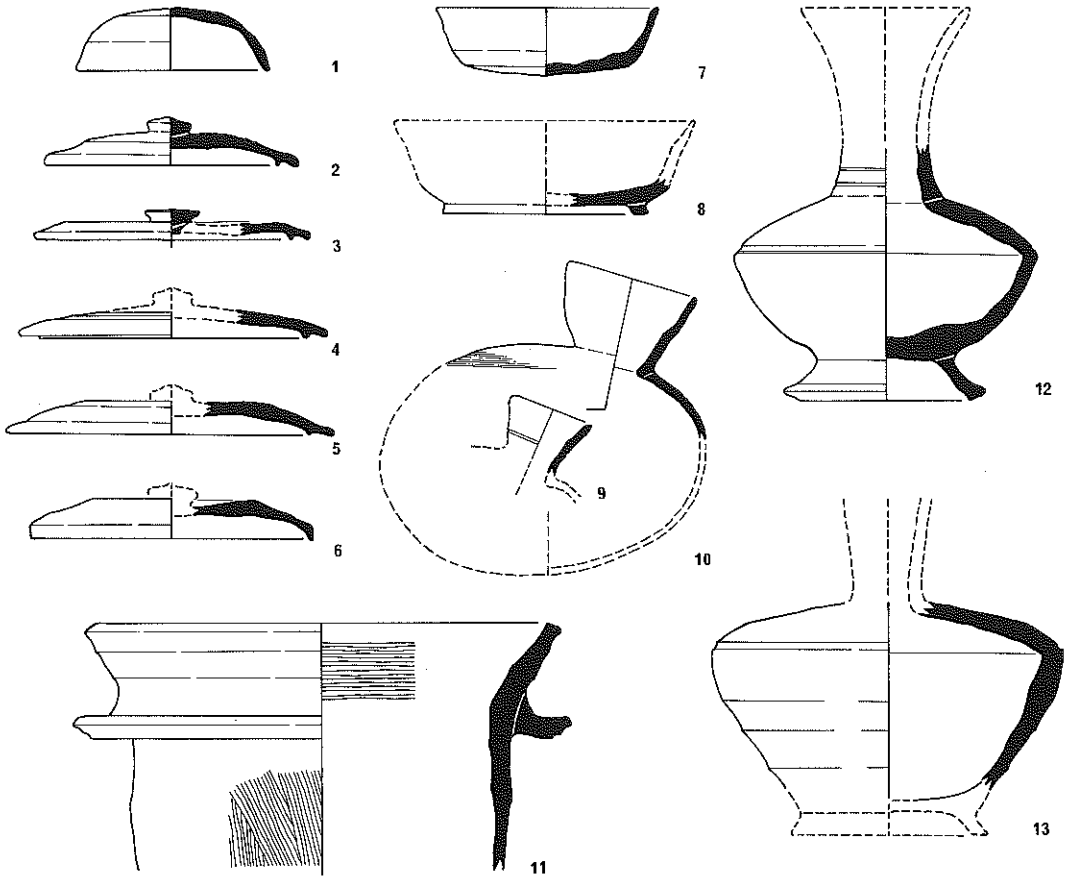
図版第九七 第11トレンチ遺構実測図(3)



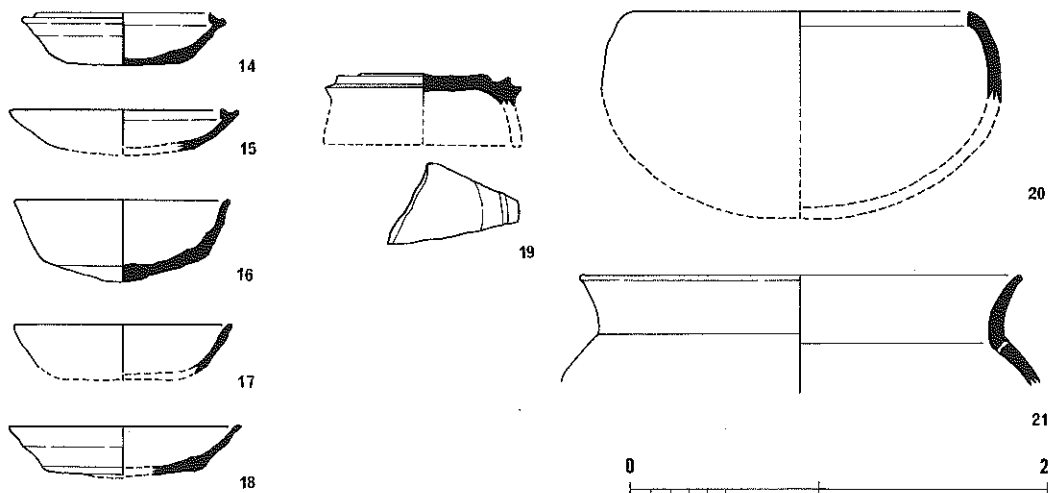
隼上り遺跡

図版第九八 土器実測図

SD09



包含層





(1) 第9トレンチ (羽戸山遺跡) 完掘状況 (南西から)



(2) 第10トレンチ 完掘状況 (西から)

隼 上 り 遺 跡



(1) 第11トレンチ 調査前状況 (南から)



(2) 第11トレンチ 遺構検出状況 (北から)



(1) 第11トレンチ SD09・SB13・SB18 (南から)

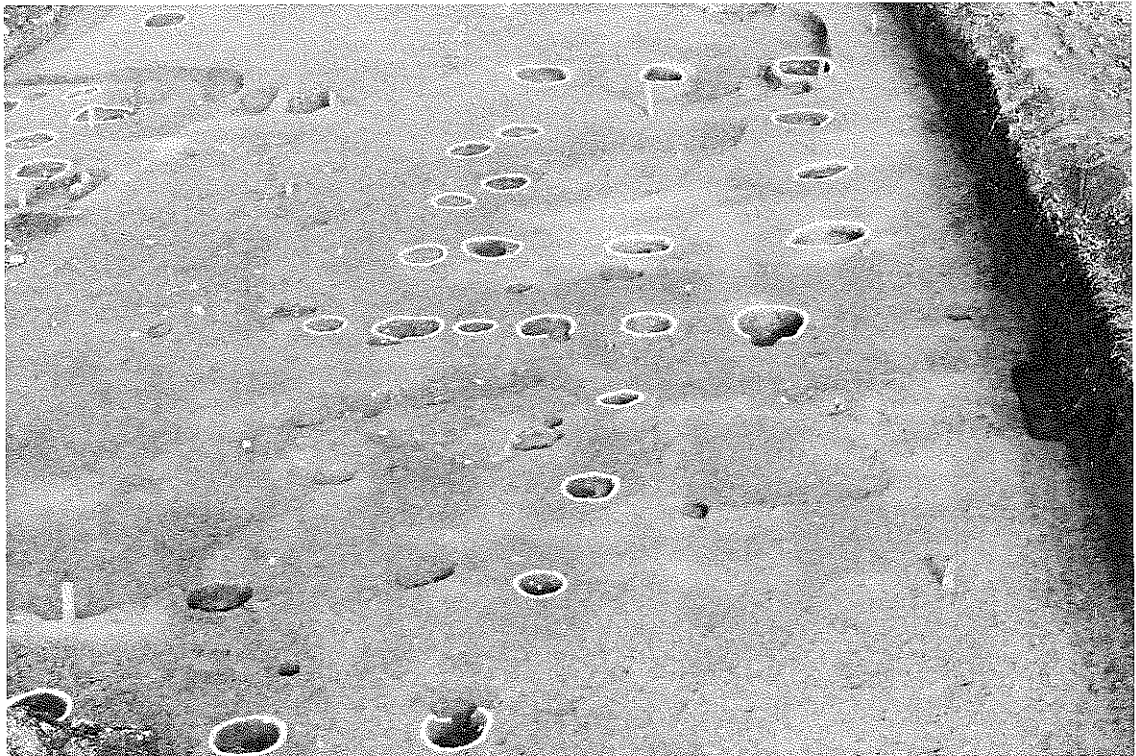


(2) 第11トレンチ SB06 (北西から)

隼 上 り 遺 跡



(1) 第11トレンチ SB01 (北から)



(2) 第11トレンチ SB02・SB16・SA19 (南から)

昭和58年3月25日 印刷

昭和58年3月31日 発行

隼上り瓦窯跡発掘調査概報

(宇治市埋蔵文化財発掘調査概報 第3集)

発行 宇治市教育委員会
〒611 宇治市宇治琵琶45
Ⅲ(0774)22-3141(代)

印刷 中西印刷株式会社
〒602 京都市上京区下立売通小川
東入 Ⅲ(075)441-3155(代)