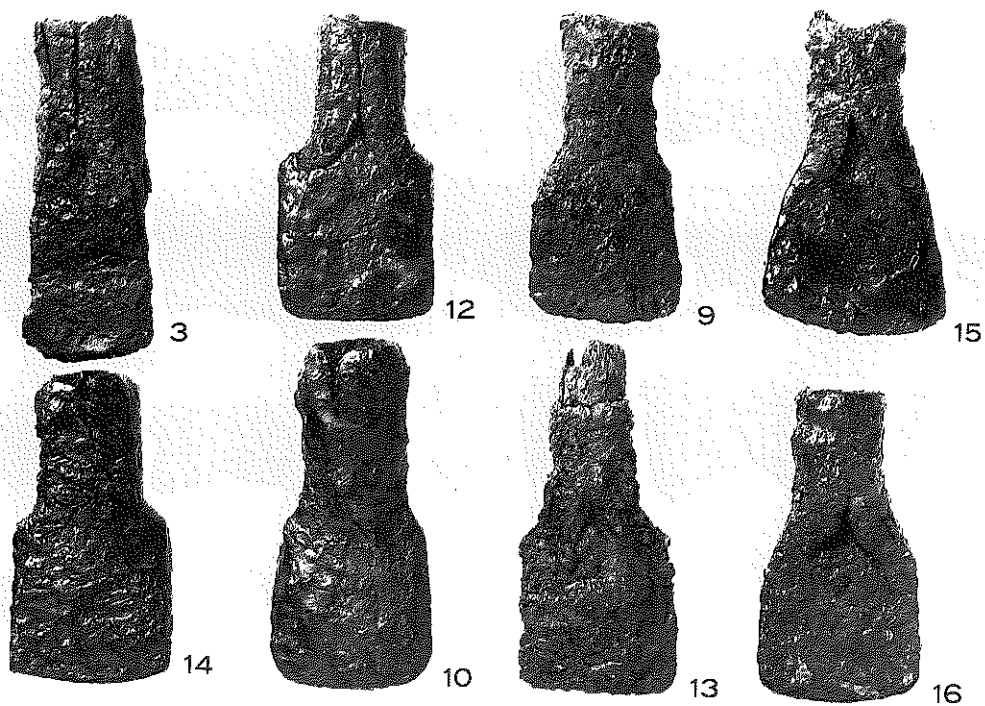
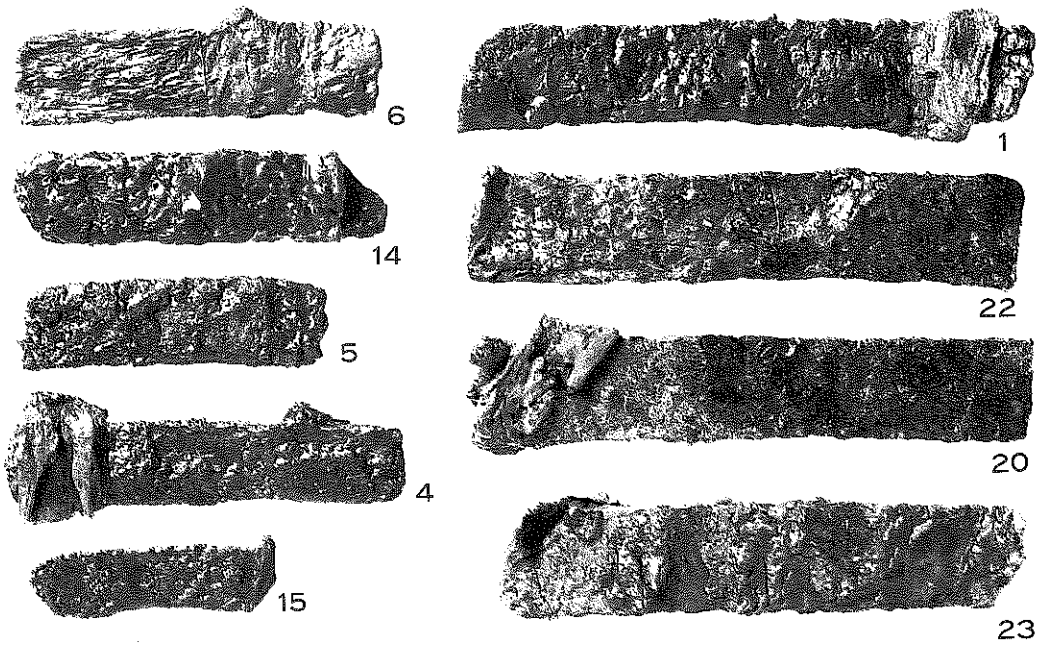


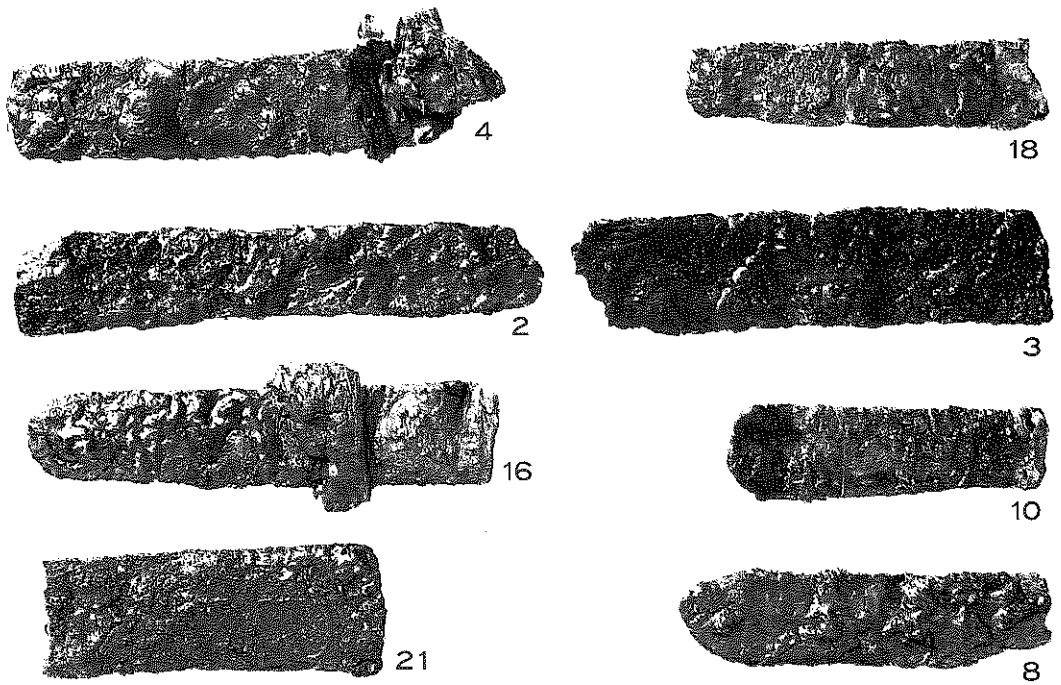
(1) 鉄斧 (第33図参照)



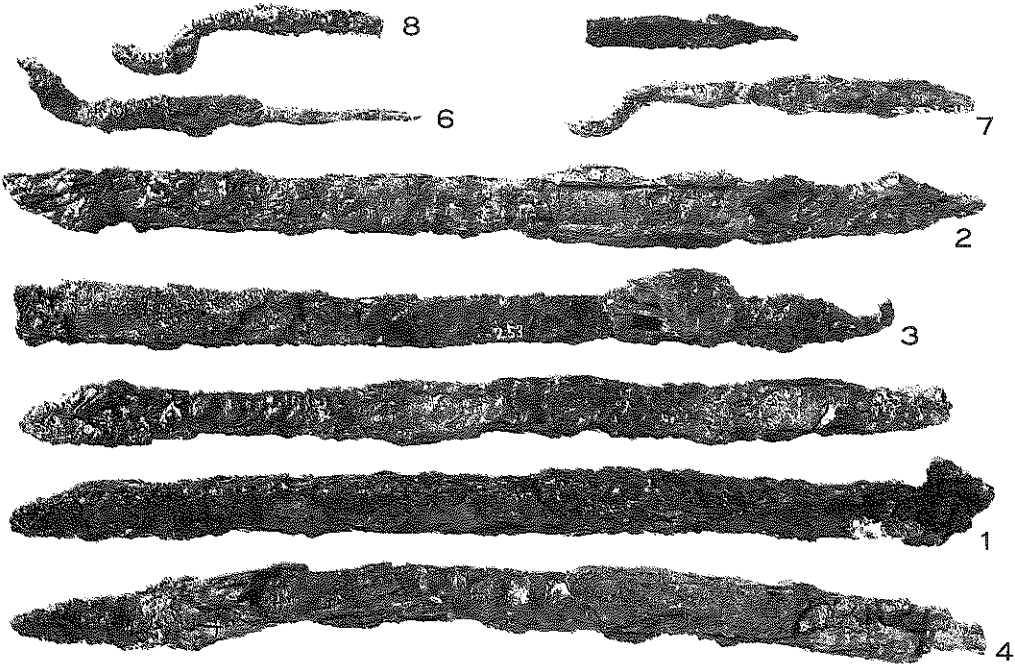
(2) 鉄斧 (第33図参照)



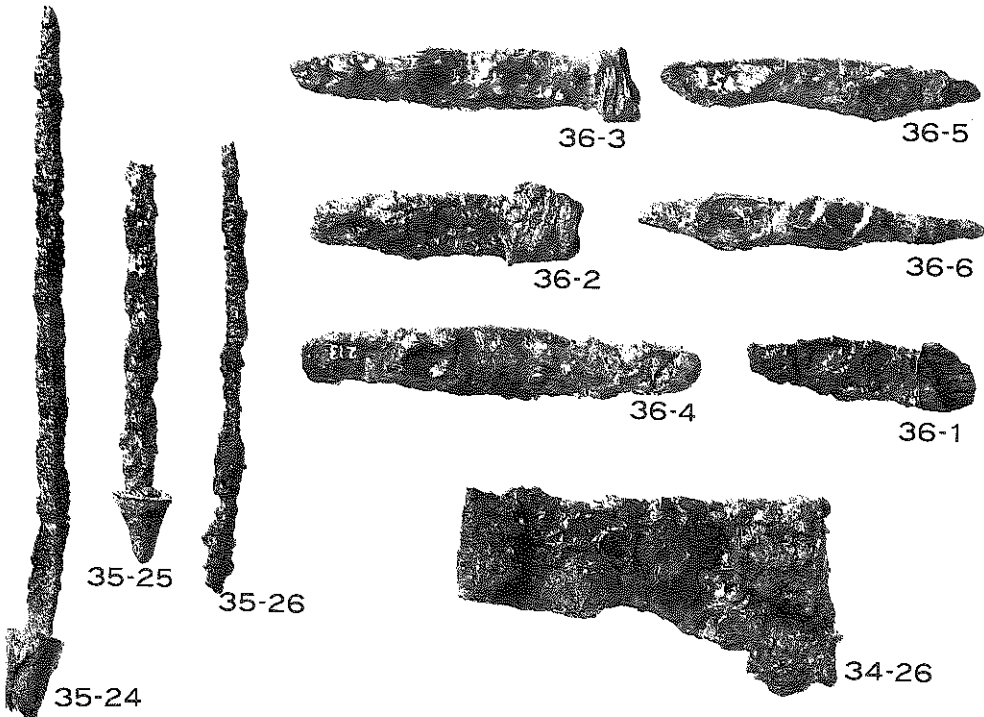
(1) 鎌 (第34図参照)



(2) 鎌 (第34図参照)

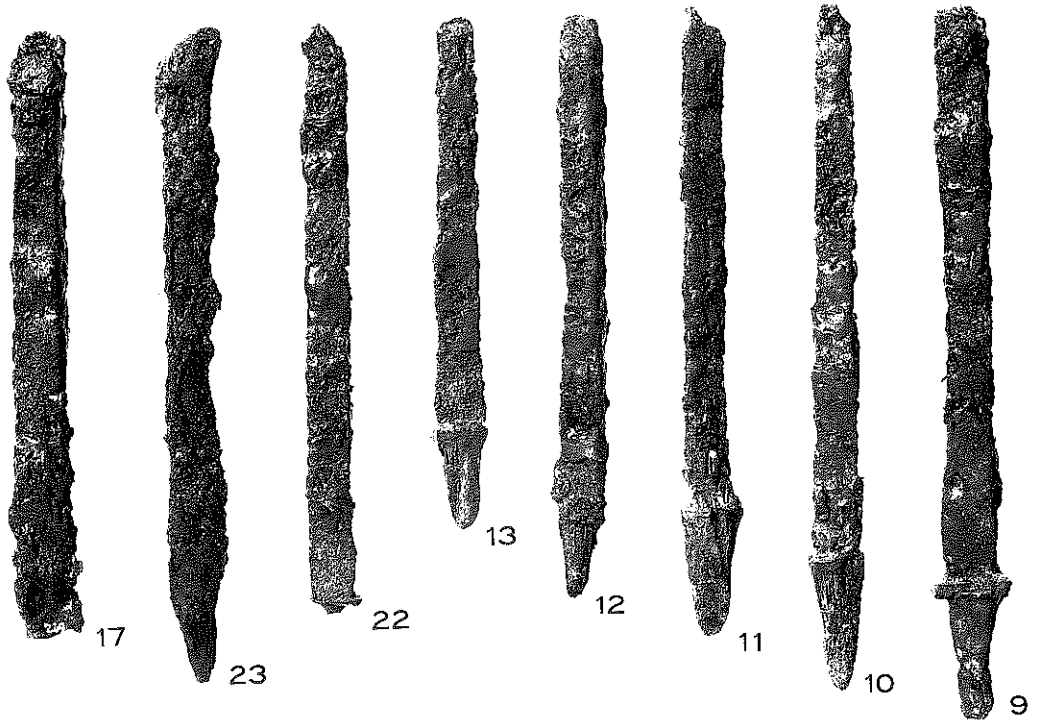


(1) 鏃 (第35図参照)

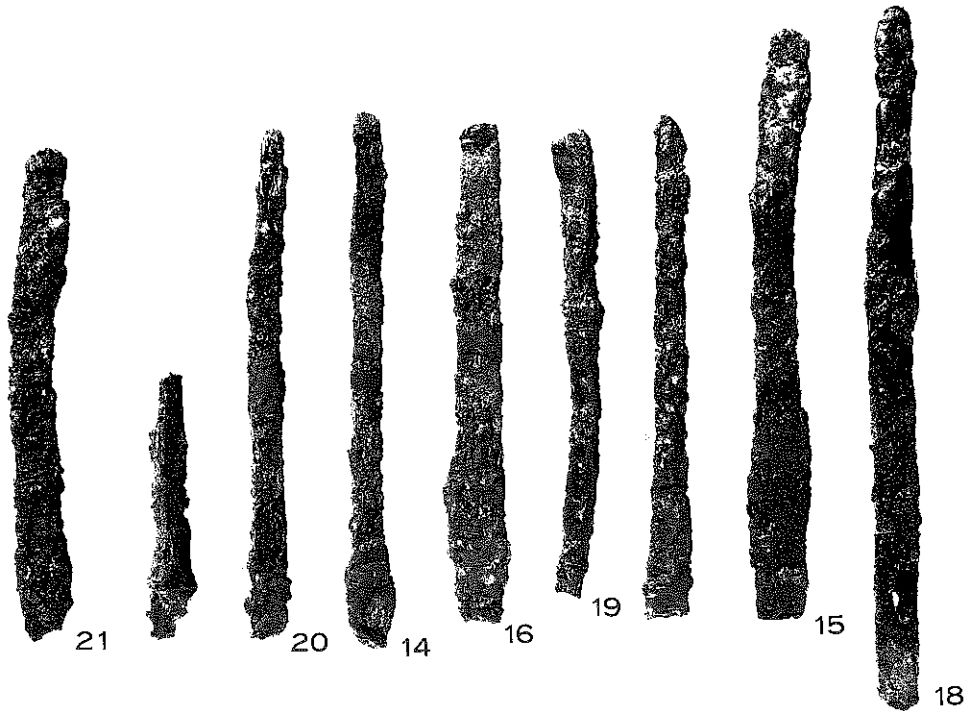


(2) 鋏・錐・刀子・ヘラ状工具 (第34~36図参照)

図版第48



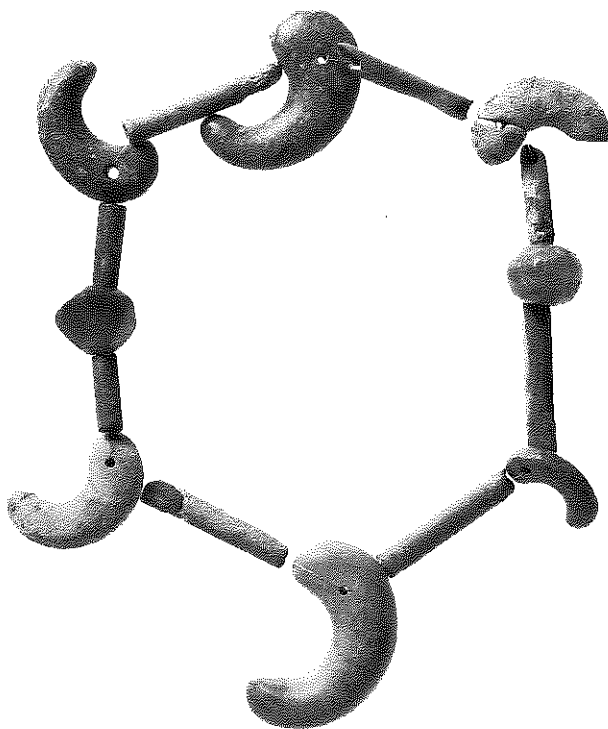
(1) 鏃 (第35図参照)



(2) 鏃 (第35図参照)



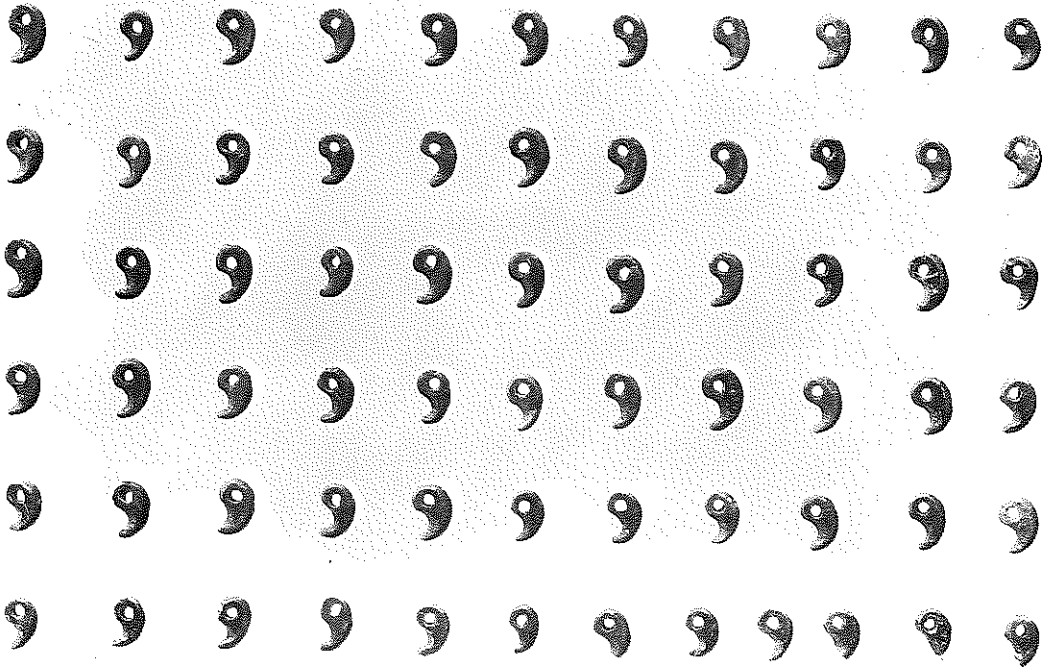
仿製半円方形帶神獸鏡



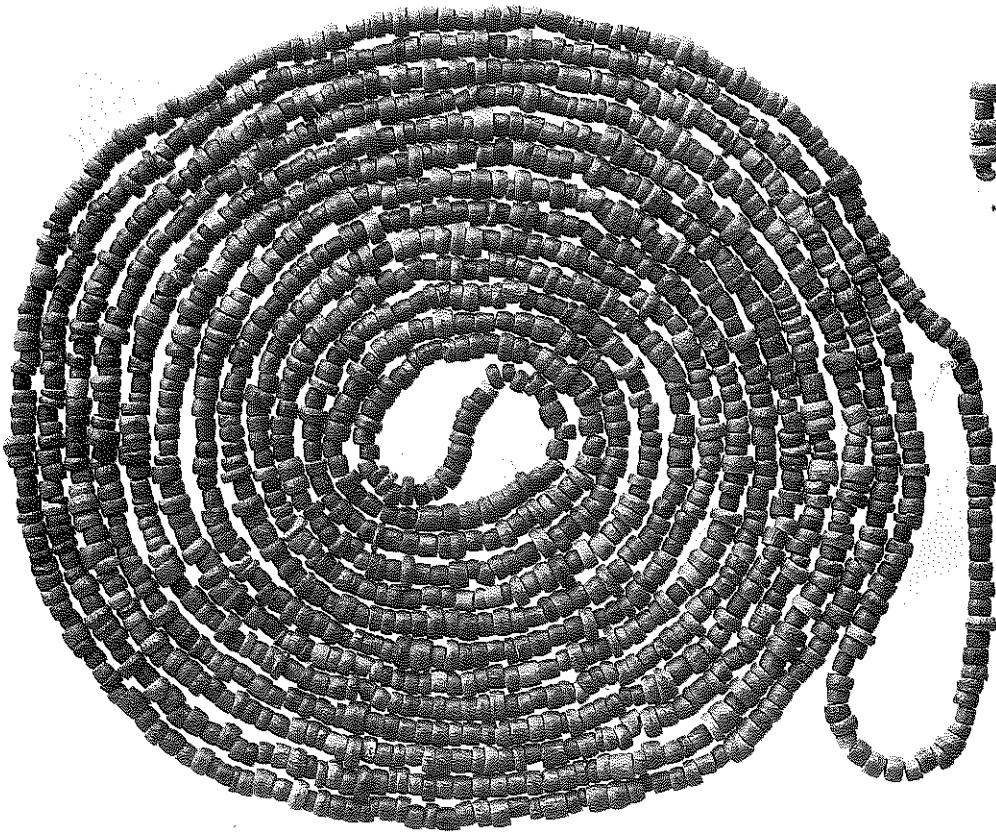
(1) 碧玉製勾玉・碧玉製管玉・瑪瑙製切子玉



(2) ガラス小玉



(1) 滑石製小型勾玉



2) 滑石製白玉



(1) 三角板革綴衝角付冑（綴装着）



(2) 三角板革綴衝角付冑（左側）





(上面)



(裏面)



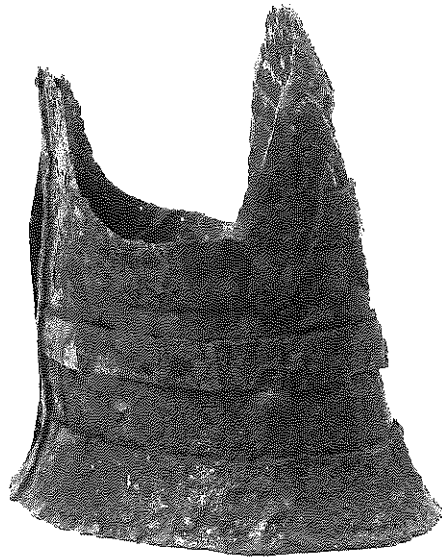
(1) 頸甲（正面）



(2) 頸甲（左斜め）



(前胴)



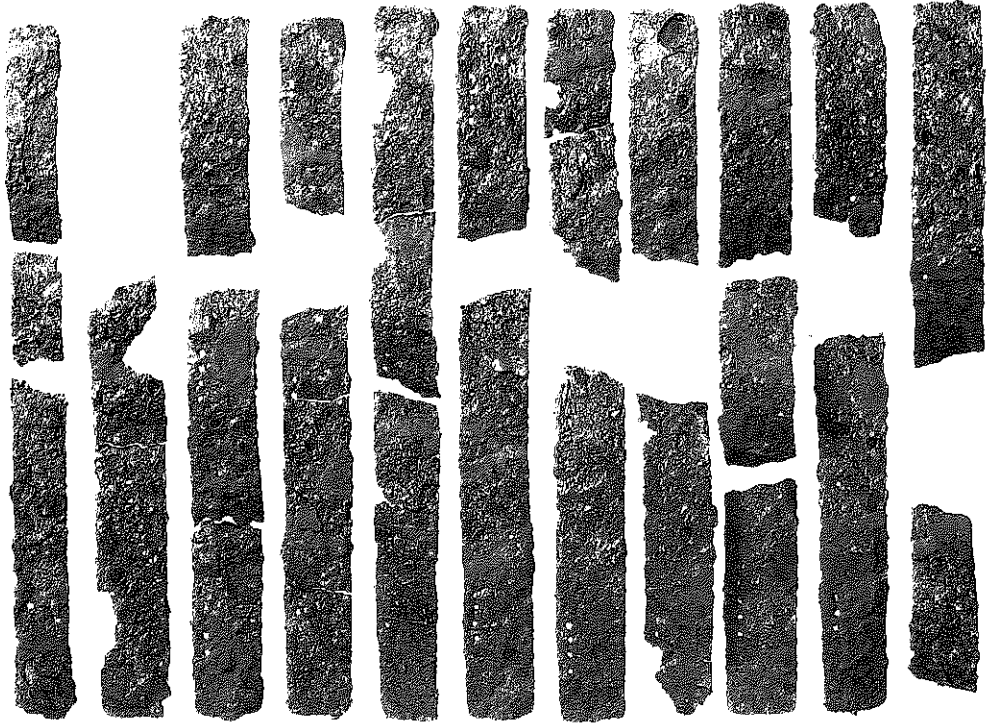
(左側)



(後胴)



(右側)



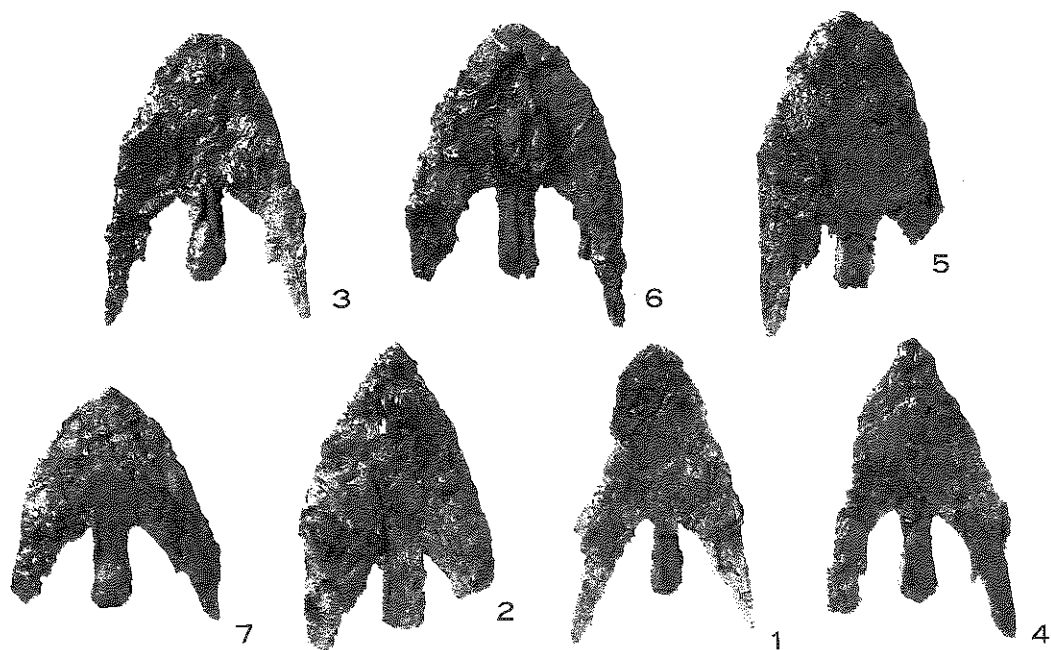
(1) 肩甲



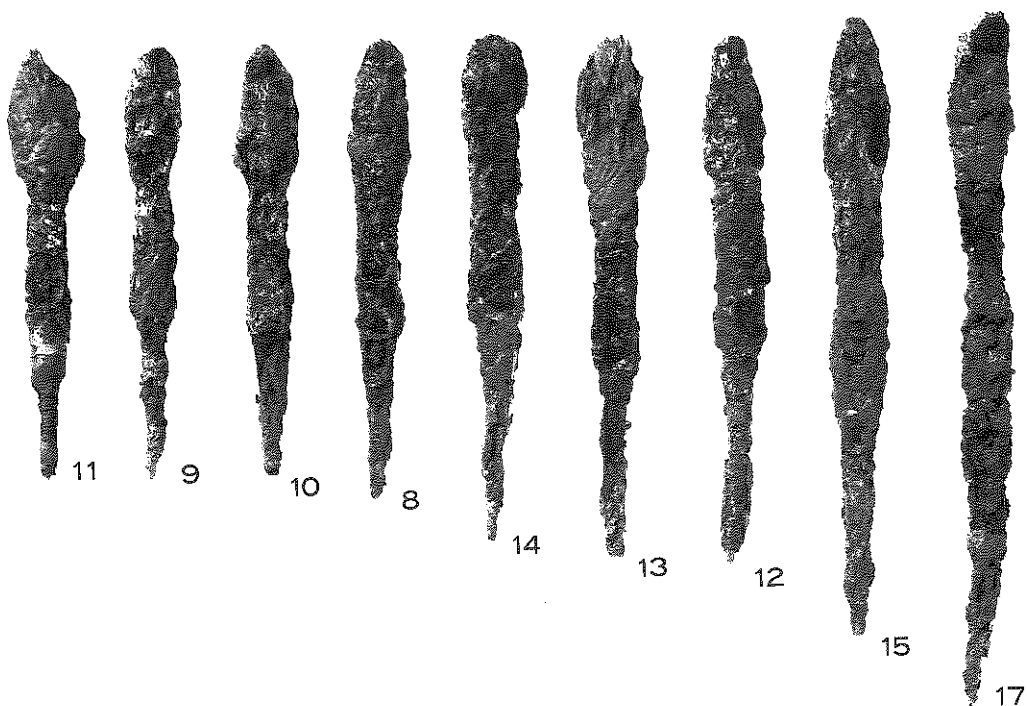
(2) 槍・短刀（第51図参照）



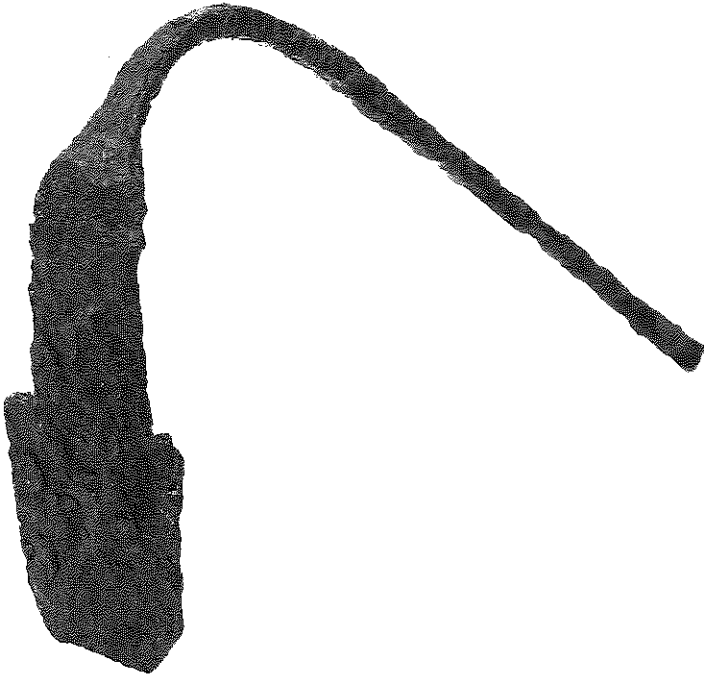
図版第58



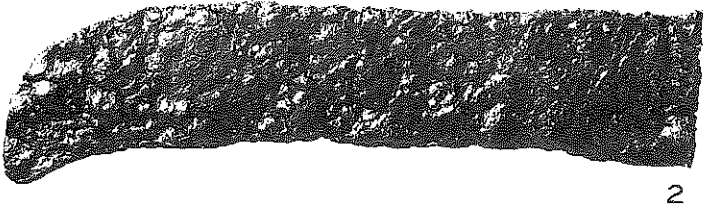
(1) 平根式鉄鎌（第52図参照）



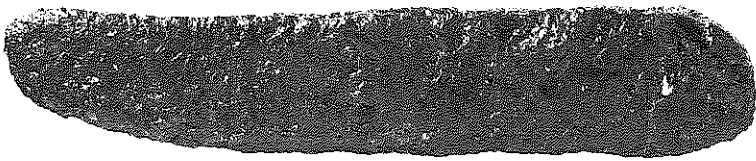
(2) 尖根式鉄鎌（第52図参照）



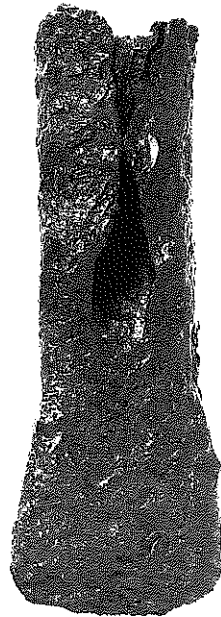
(1) 鉄柄手斧



2

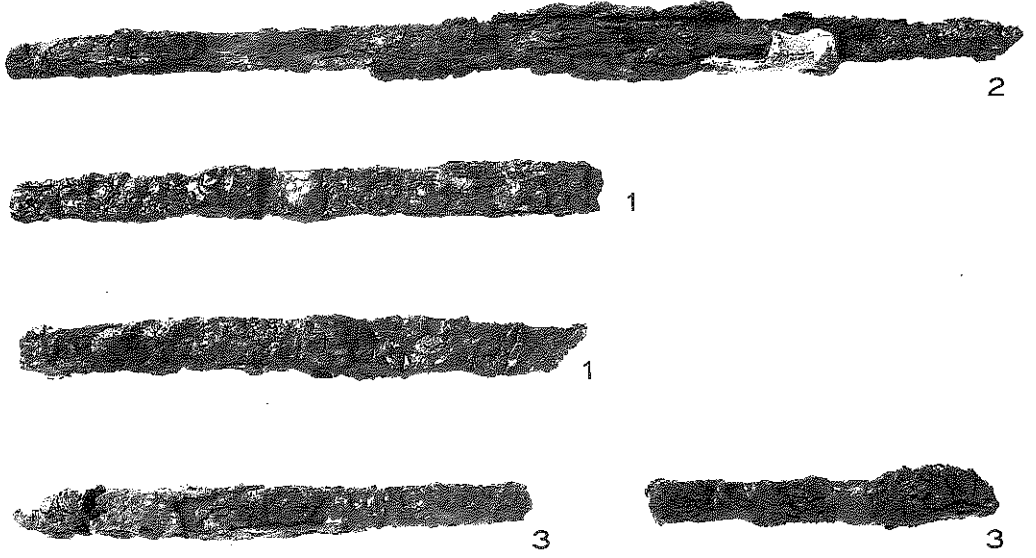


1

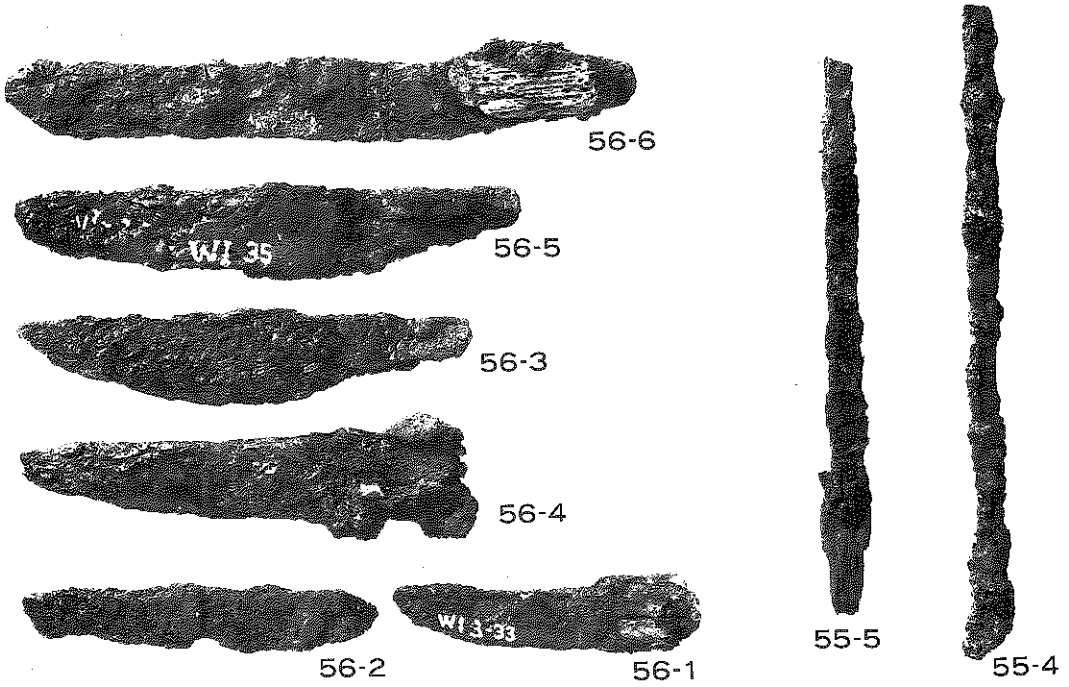


3

(2) 鉄斧・鎌（第54図参照）



(1) 鈍（第55図参照）



(2) 鑿・刀子（第55・56図参照）





1



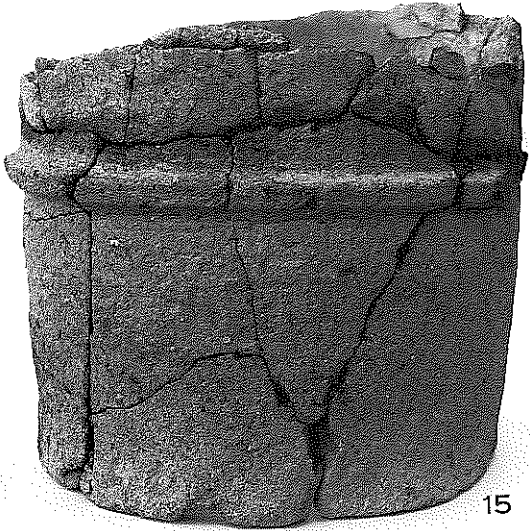
2



9



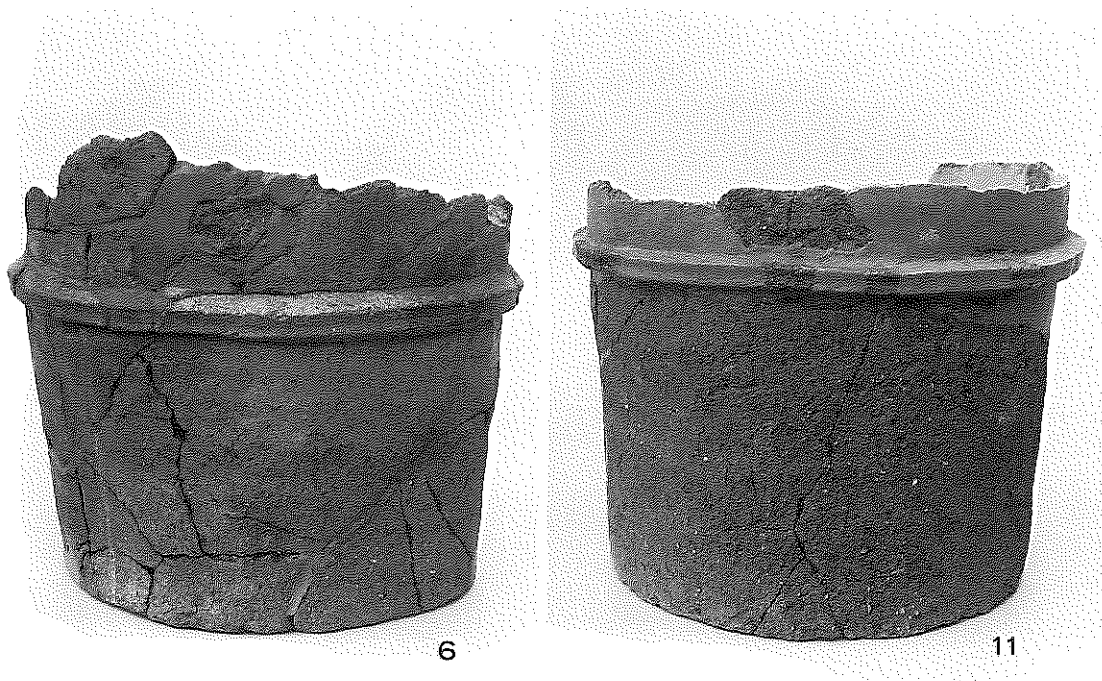
12



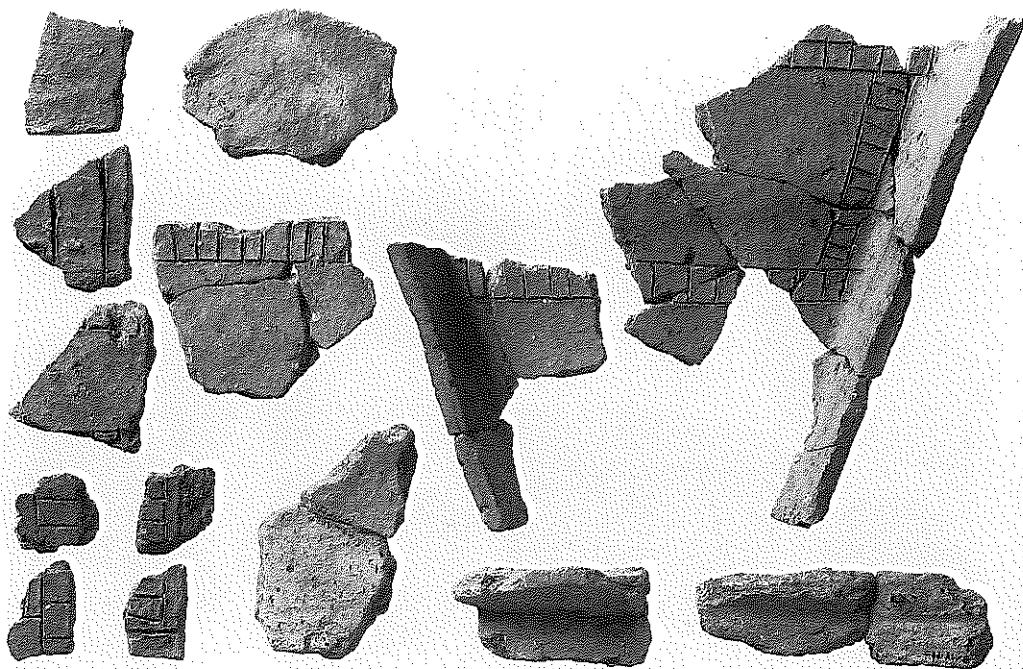
15



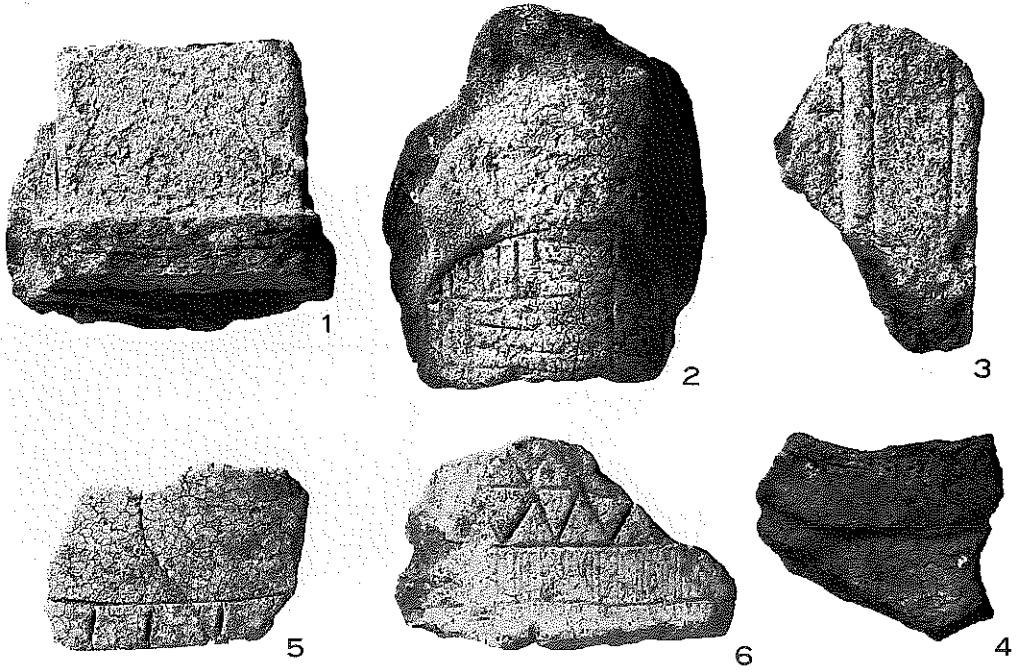
16



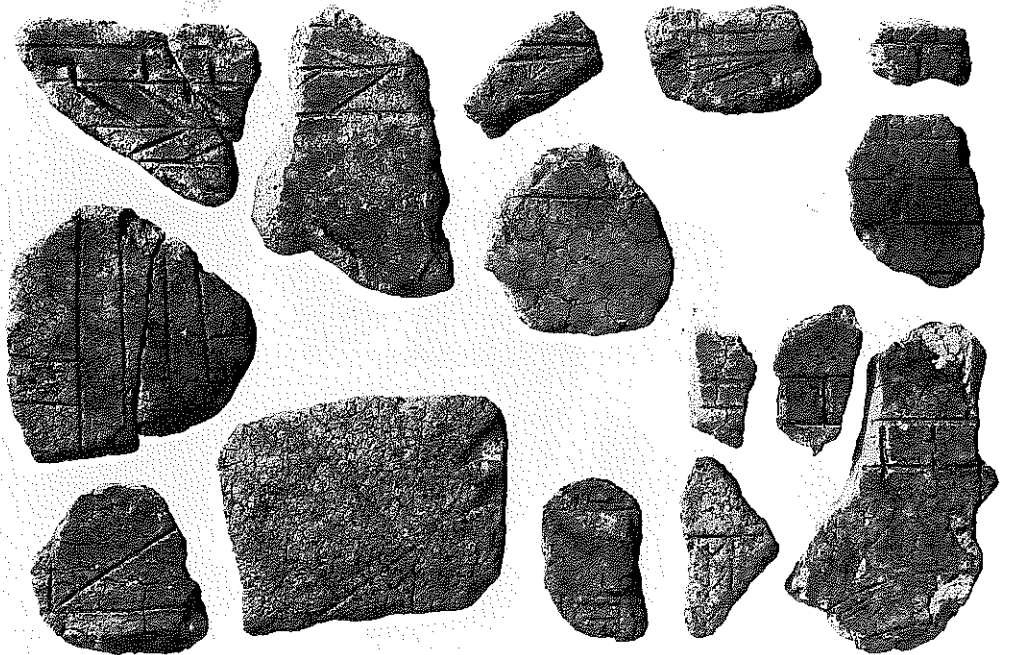
(1) 円筒埴輪



(2) 冢形埴輪 1



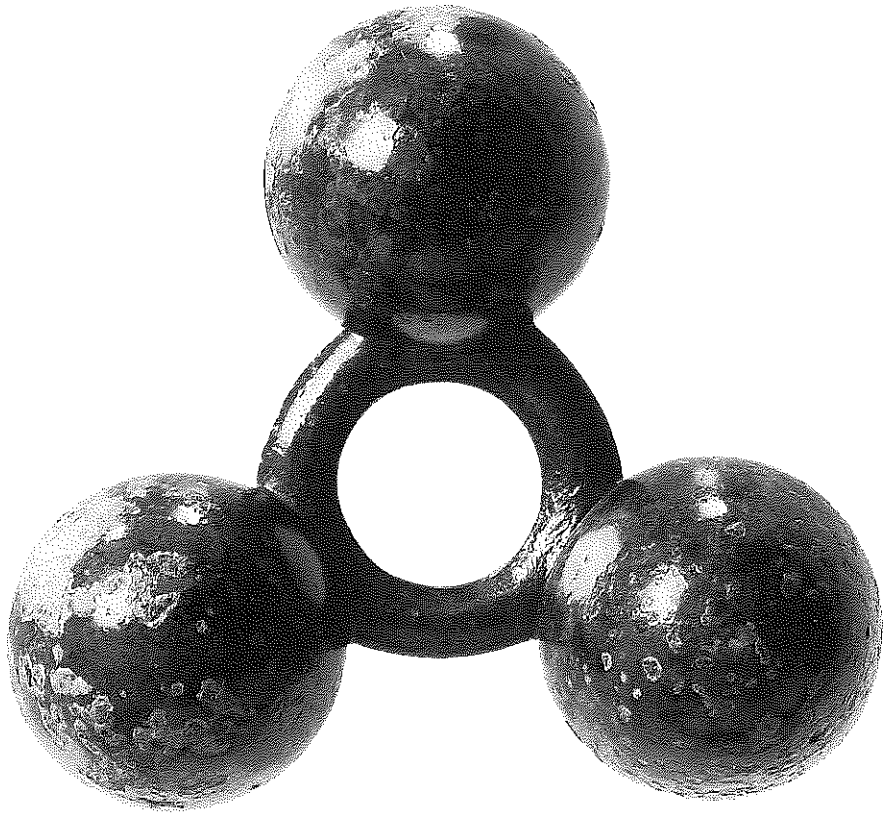
(1) 形象埴輪 (第61図参照)



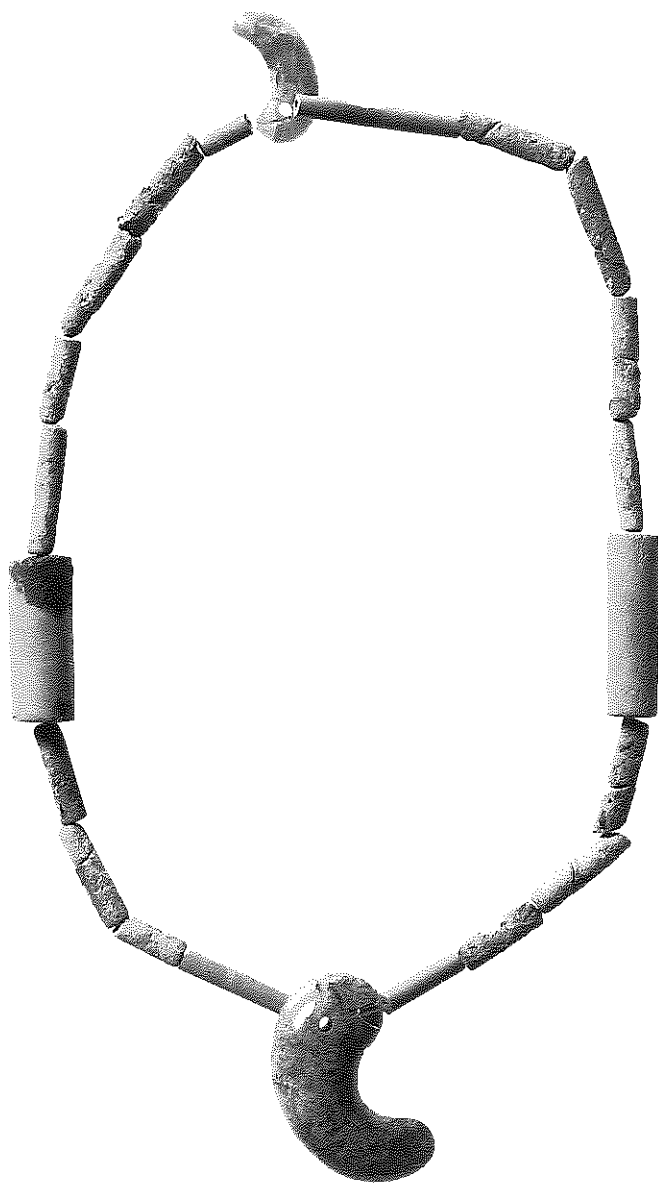
(2) 靱形埴輪 (第61図7-15参照)



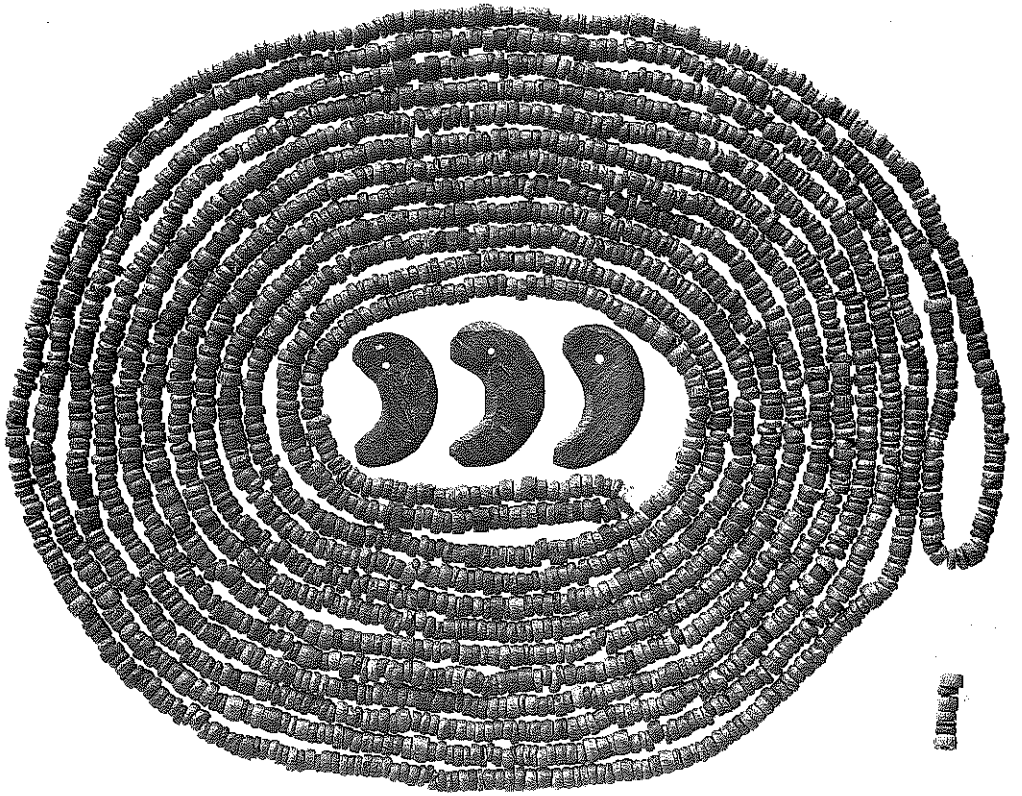
四葉文鏡



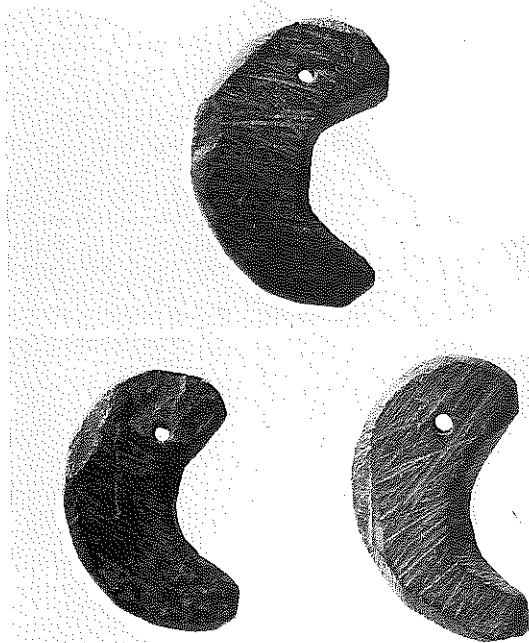
三環鈴



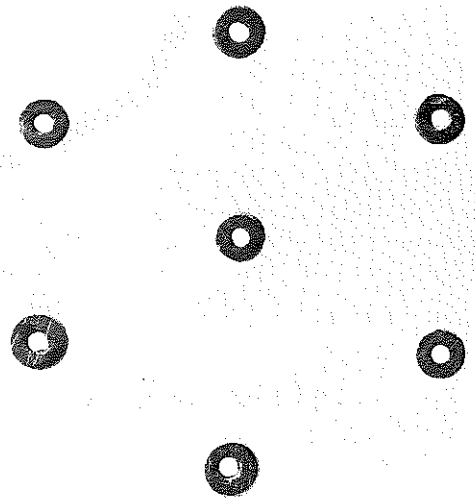
硬玉製勾玉・碧玉製管玉



(1) 滑石製玉類集合



(2) 滑石製勾玉拡大

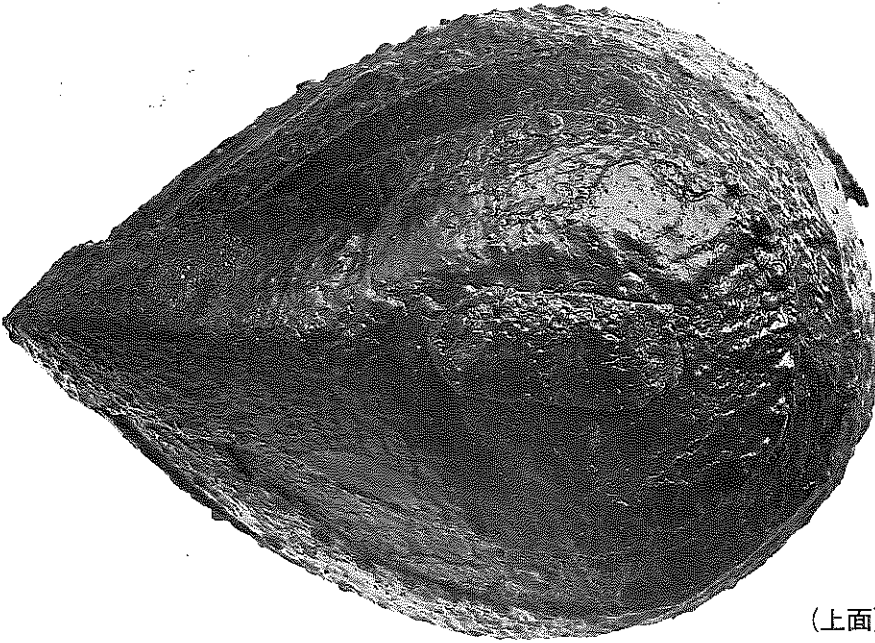


(3) 滑石製白玉拡大





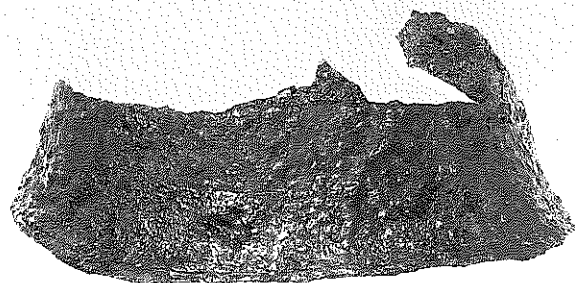
(左側)



(上面)

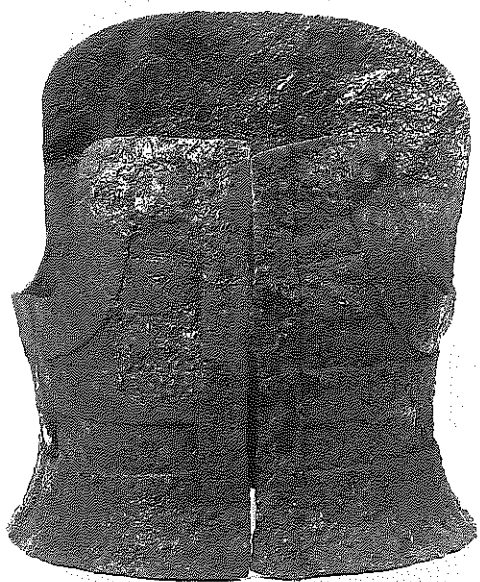


(前胴)

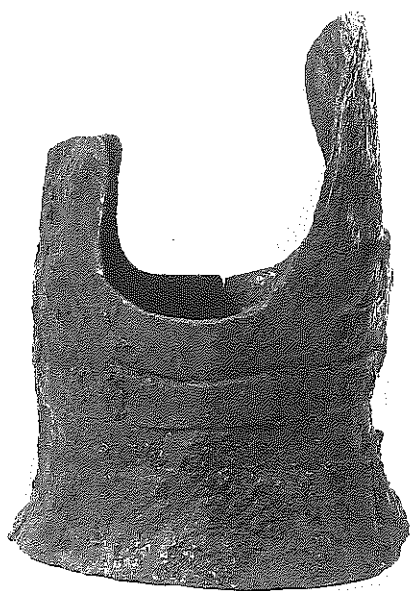


(後胴)

三角板横矧板併用鉄留短甲 (1号短甲)



(前胴)



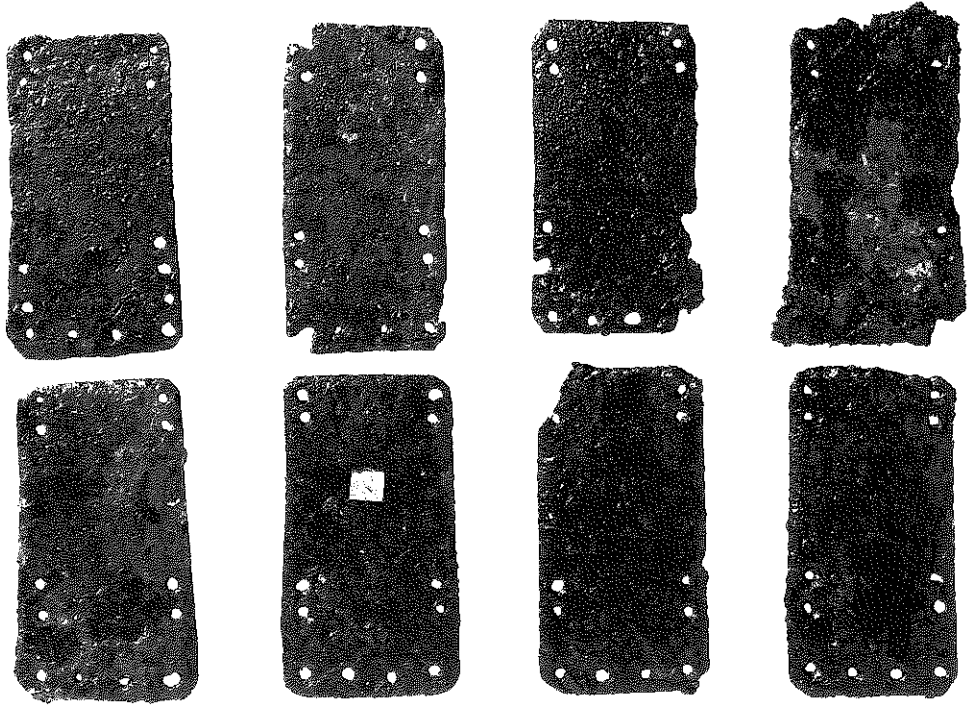
(左側)



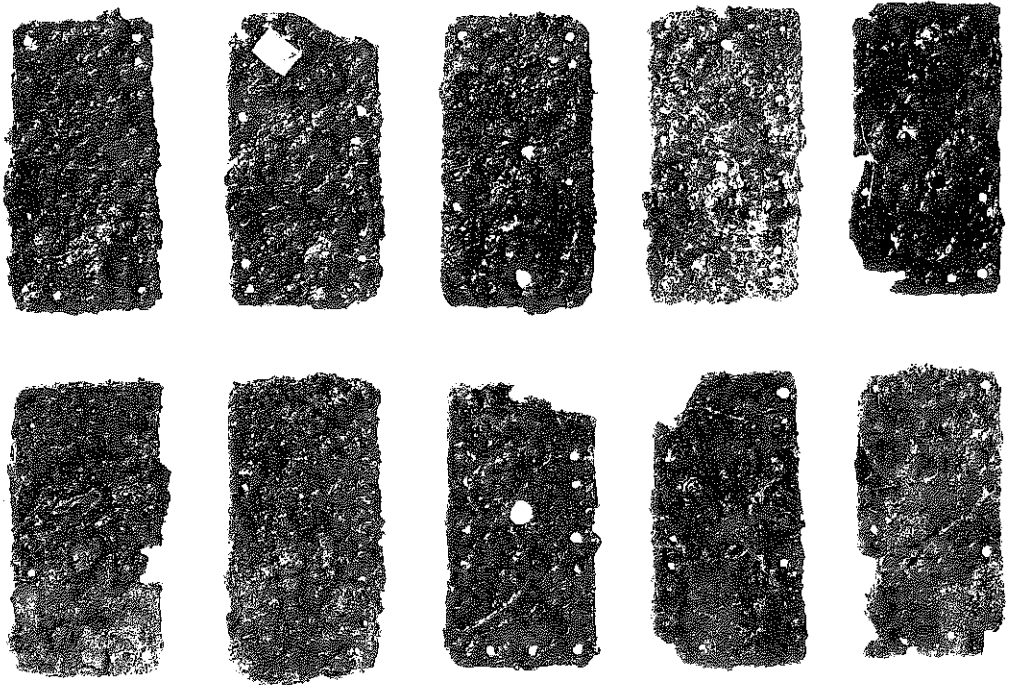
(後胴)



(右側)



(1) 挂甲小札 (A類)



(2) 挂甲小札 (B類)



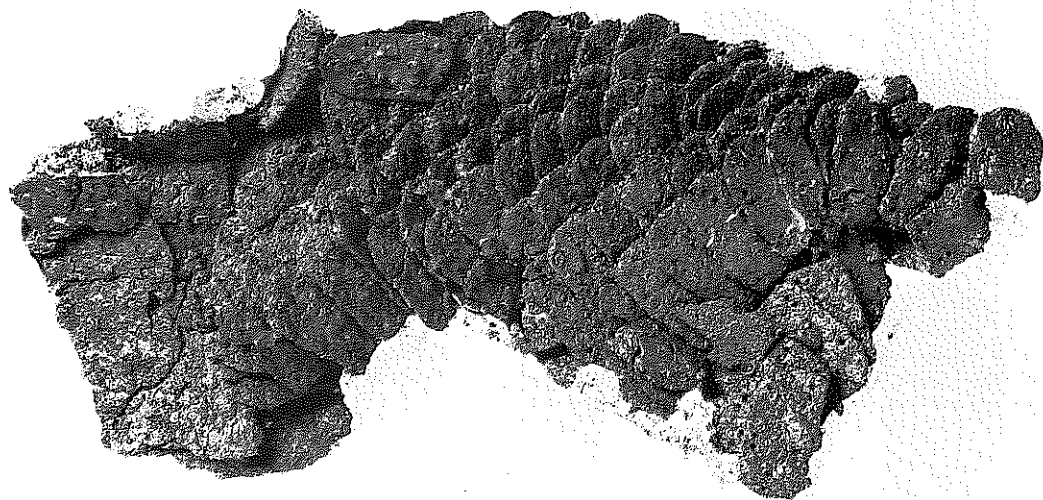
(1) 挂甲小札 (C類)



(2) 挂甲小札 (D類)



(1) 1号頸甲



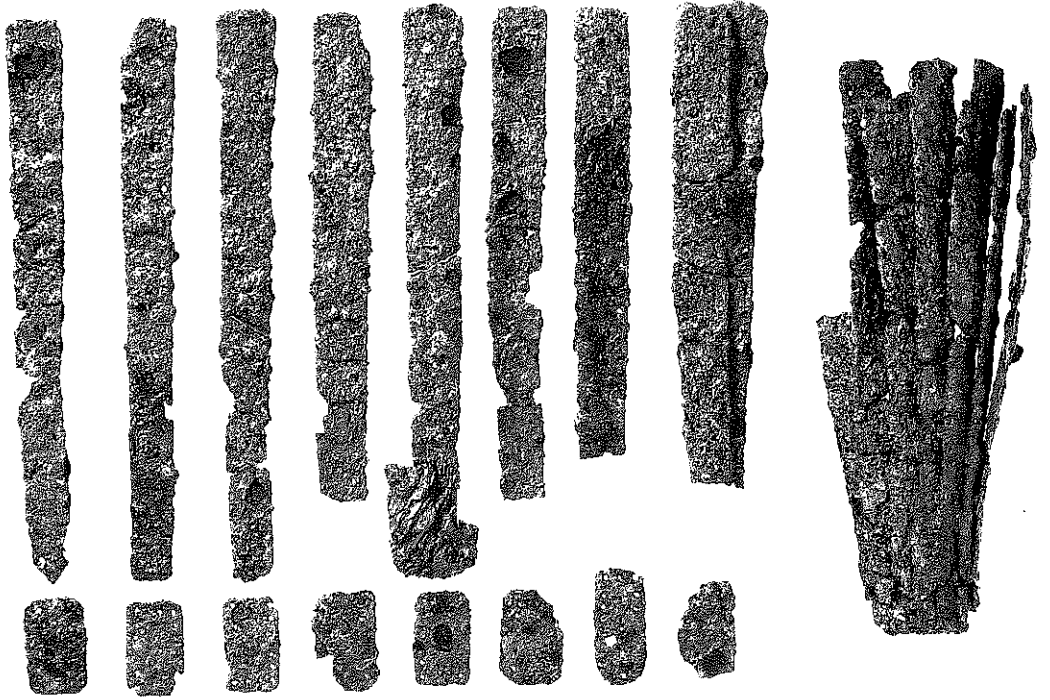
(2) 1号頸甲・1号肩甲



(1) 2号頸甲



(2) 2号肩甲



(1) 1号籠手・手甲小札

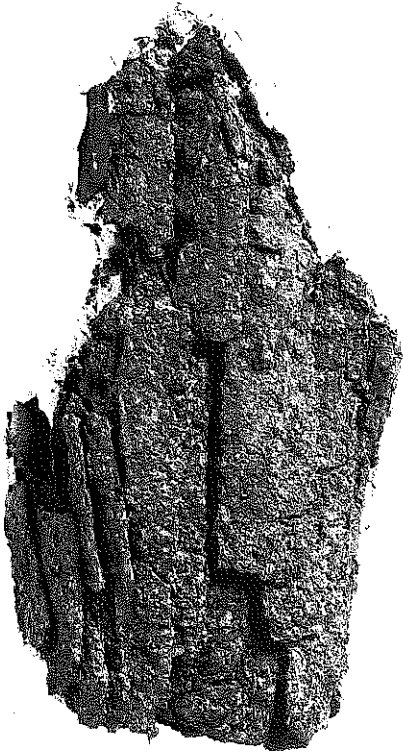


(2) 1号籠手・手甲小札拡大

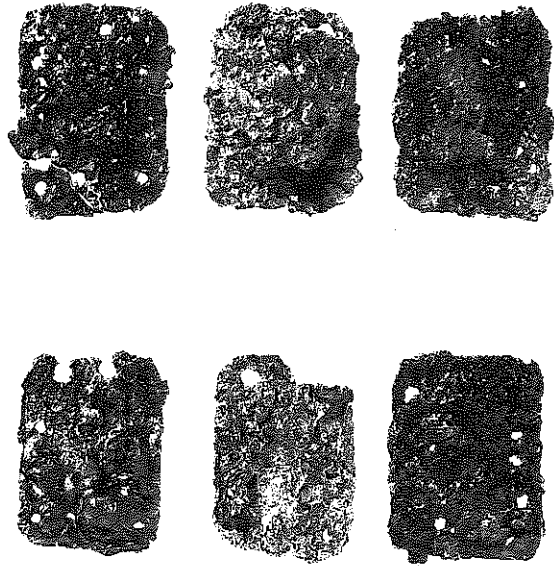




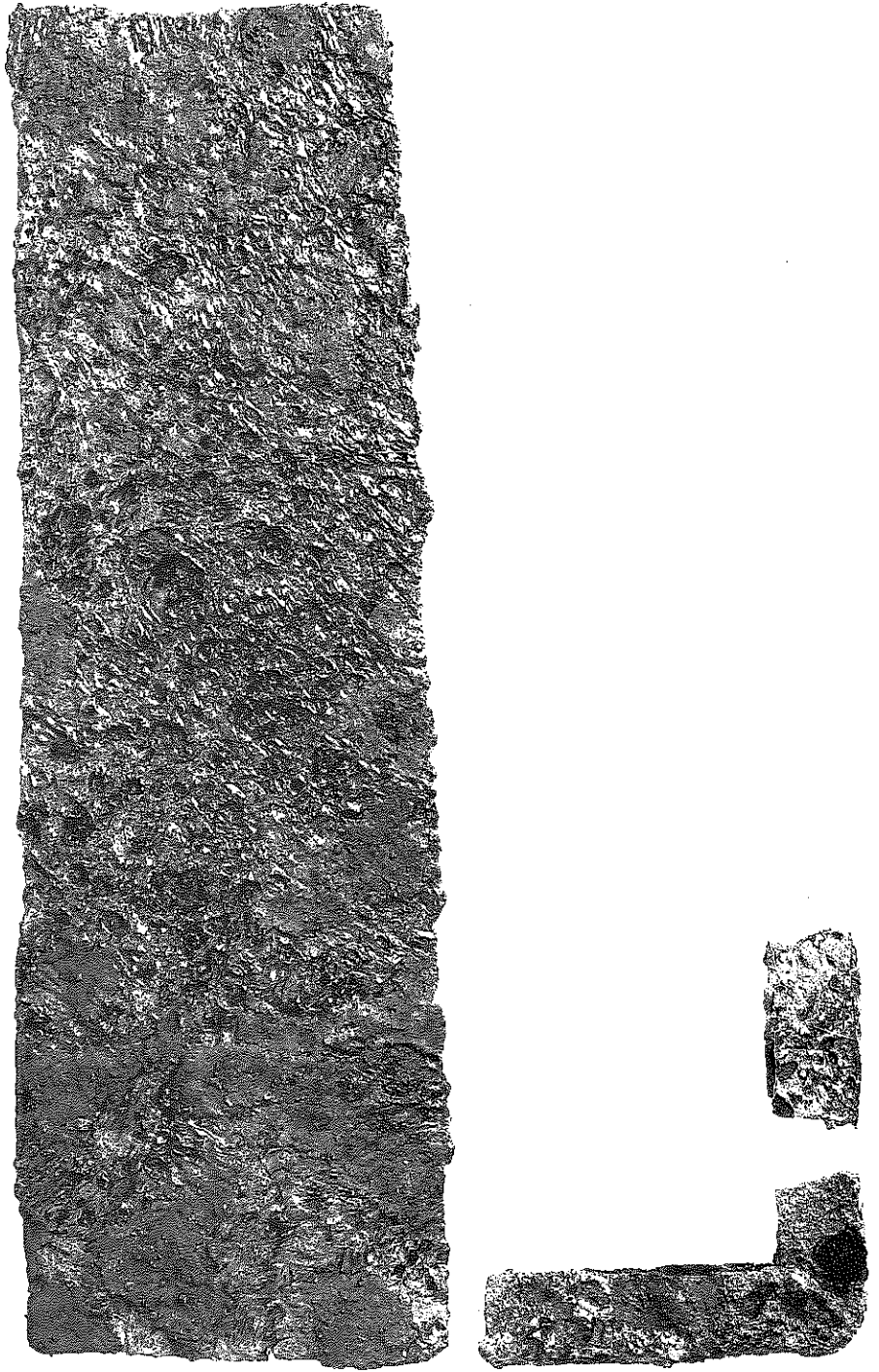
(1) 2号籠手



(2) 2号籠手



(3) 2号籠手・手甲小札拡大



楯金具



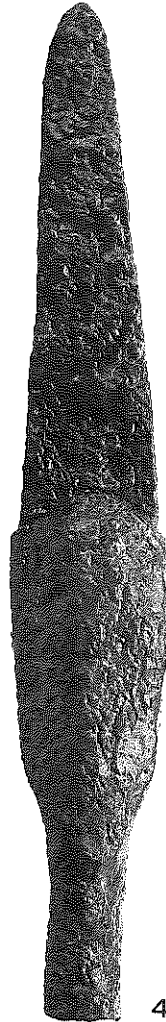
1



3



2

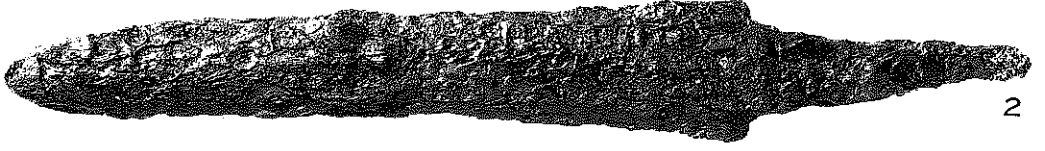


4

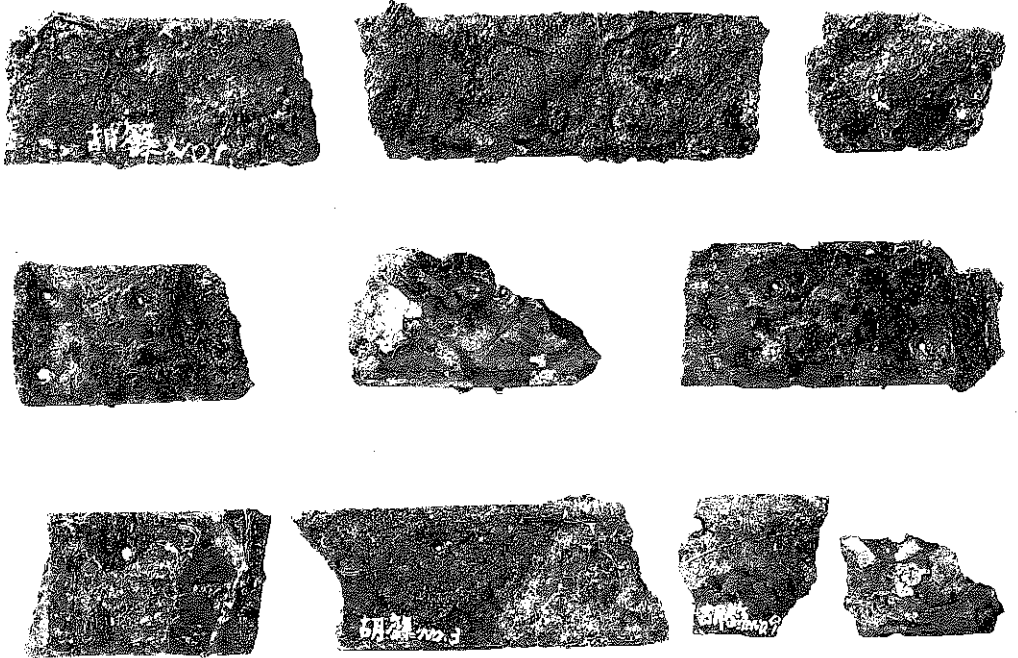


(1) 矛・石突 (第92図参照)

(2) 槍身矛 (第92図参照)



(1) 劍 (第91図参照)



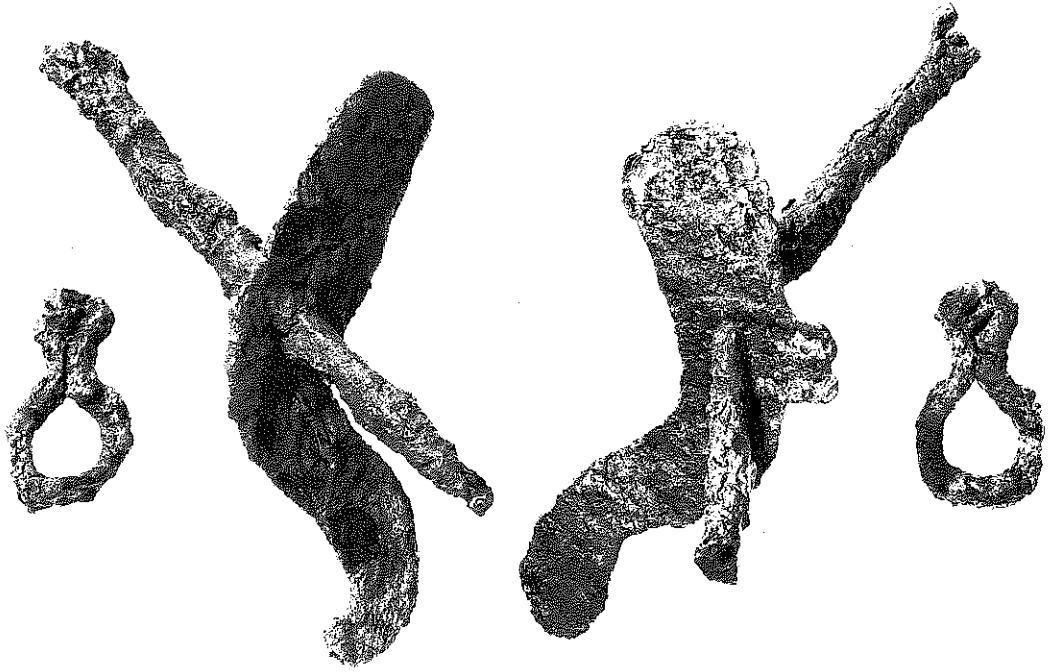
(2) 胡籙金具



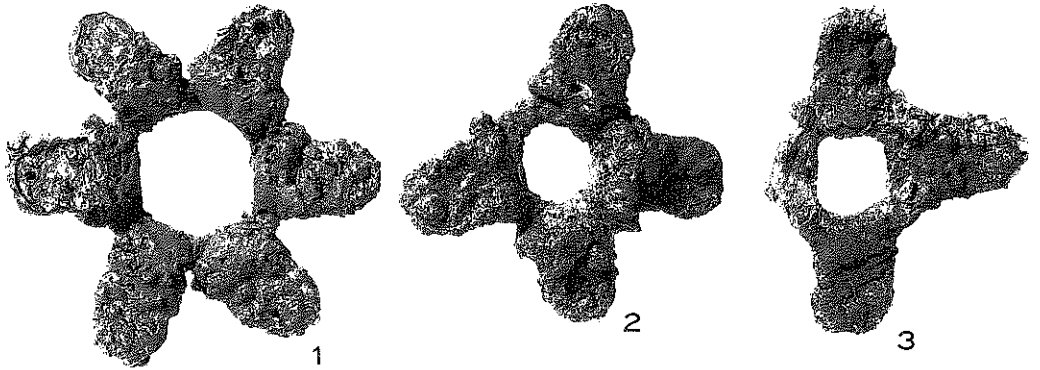
(1) 鉄鏃 2 群平根式 (第94図参照)



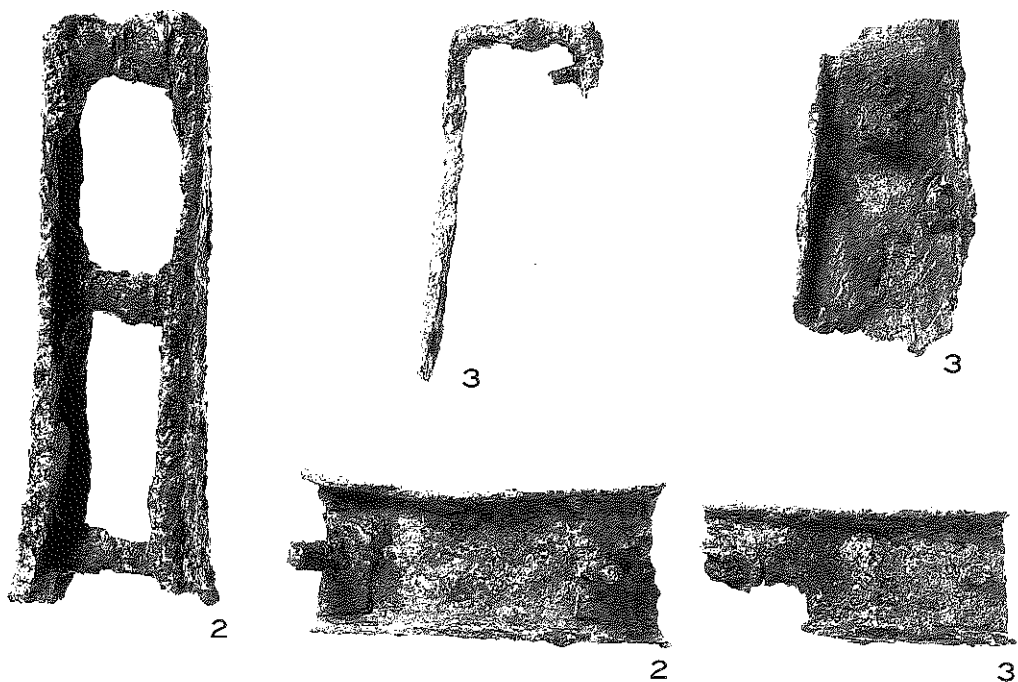
(2) 鉄鏃 2 群長頸式



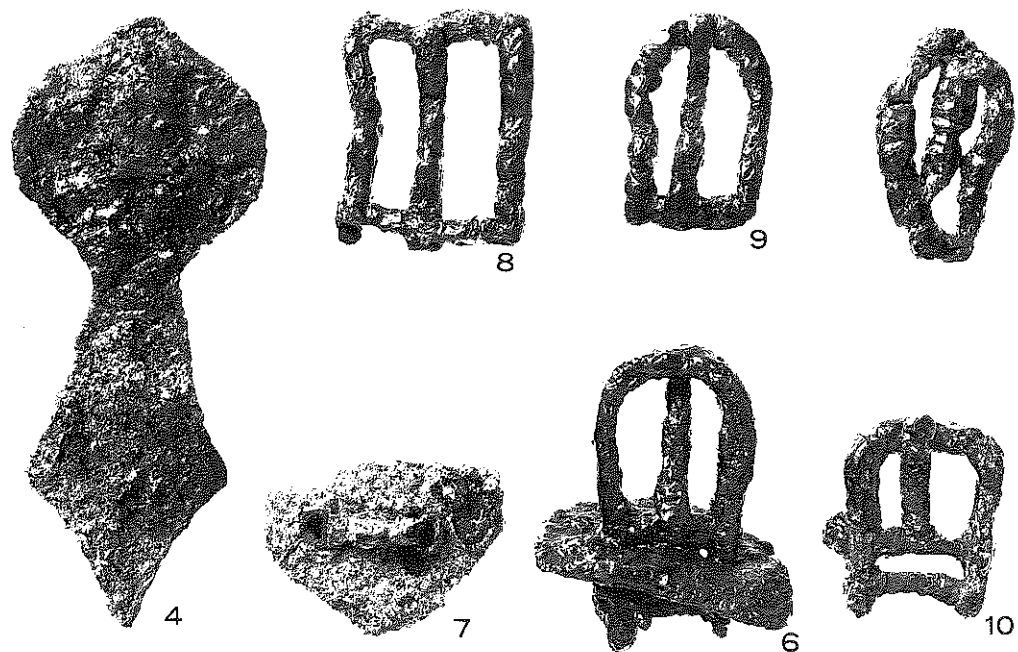
(1) f字形鏡板付響



(2) 環状雲珠・環状辻金具(第101図参照)



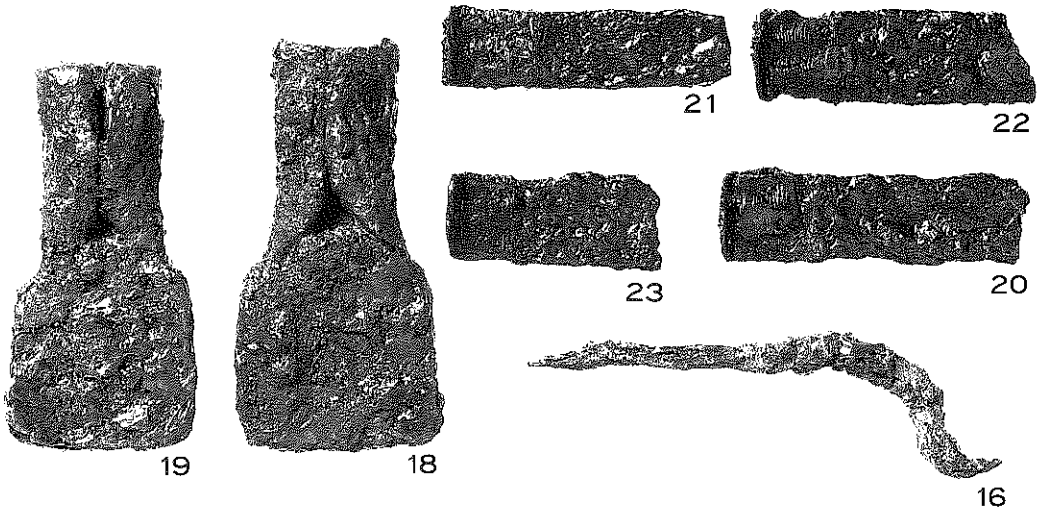
(1) 木心鉄張輪鍔 (第100図参照)



(2) 劍菱形杏葉・鞞金具・鉸具 (第100図参照)



(1) 組合式辻金具 (第101図参照)



(2) 鉄斧・鎌・鍬 (第102図参照)

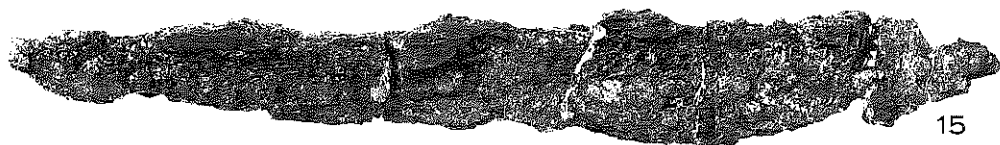




13



14



15

(1) 刀子 (第102図参照)



3



1



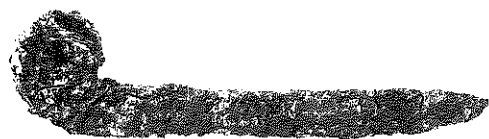
7



2



6



4



10

(2) 刀子・ワラビ手刀子・不明鉄器 (第102図参照)



---

平成3年3月30日発行

宇治市文化財調査報告書 第2冊

宇治二子山古墳発掘調査報告

発行者 宇治市教育委員会  
京都府宇治市宇治琵琶45番地

製作者 河北印刷株式会社

---

UJI-FUTAGOYAMA BURIAL MOUND  
EXCAVATION REPORT

1991

THE BOARD OF EDUCATION OF UJI CITY

UJI, KYOTO, JAPAN



