

写真図版





調査地近景（北東から）  
— T-Ⅲ・Ⅳトレンチ掘削中、左上方に宇治橋を望む —



調査地近景（南から）  
— T-I・IIトレンチ掘削中、中央上方の竹藪が大鳳寺跡 —



調査地近景（西から）  
— T-Ⅲ・Ⅳトレンチ右上方マンションが門ノ前古墳の位置、上方に池山・観音山古墳を望む —



菟道門ノ前古墳全景（西から）



1. 周濠Ⅴ区内遺物出土  
状況（南から）



2. 周濠Ⅱ区内遺物出土  
状況（北西から）



3. 周濠Ⅱ区内遺物出土  
状況（北から）



1. S K01～S K03掘削  
状況（西から）

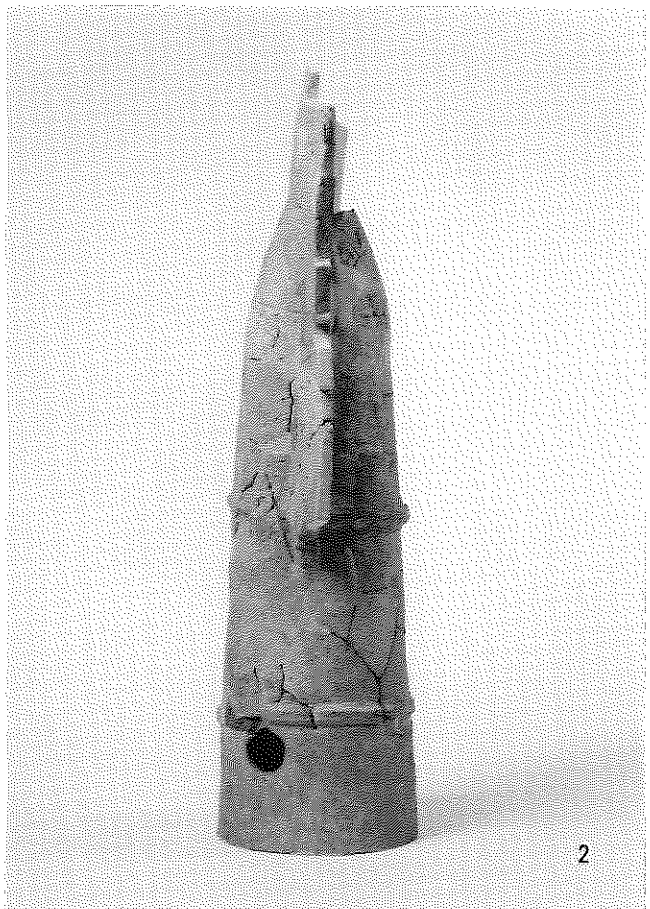


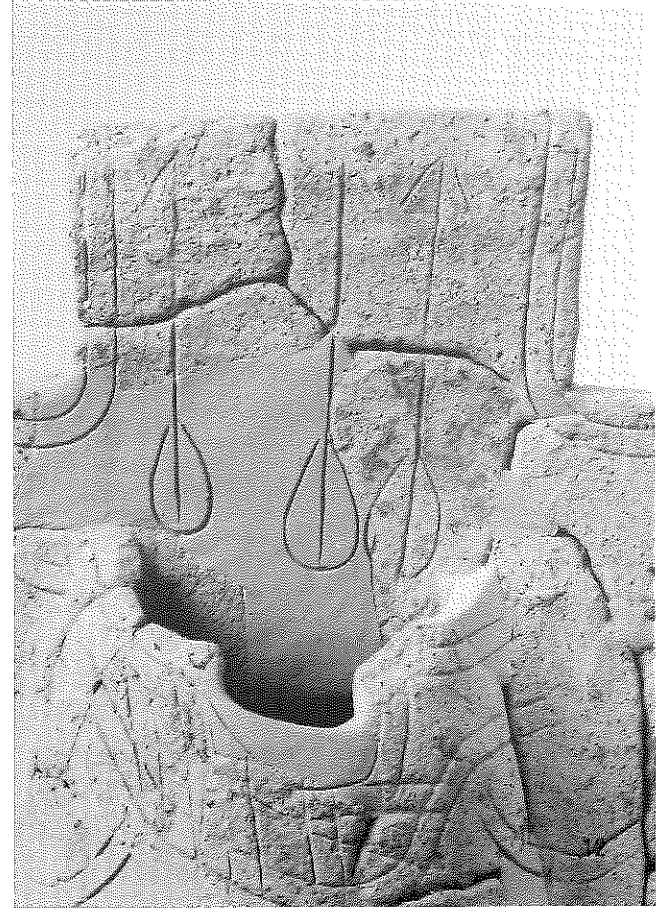
2. S K01・02完掘状況  
（西から）

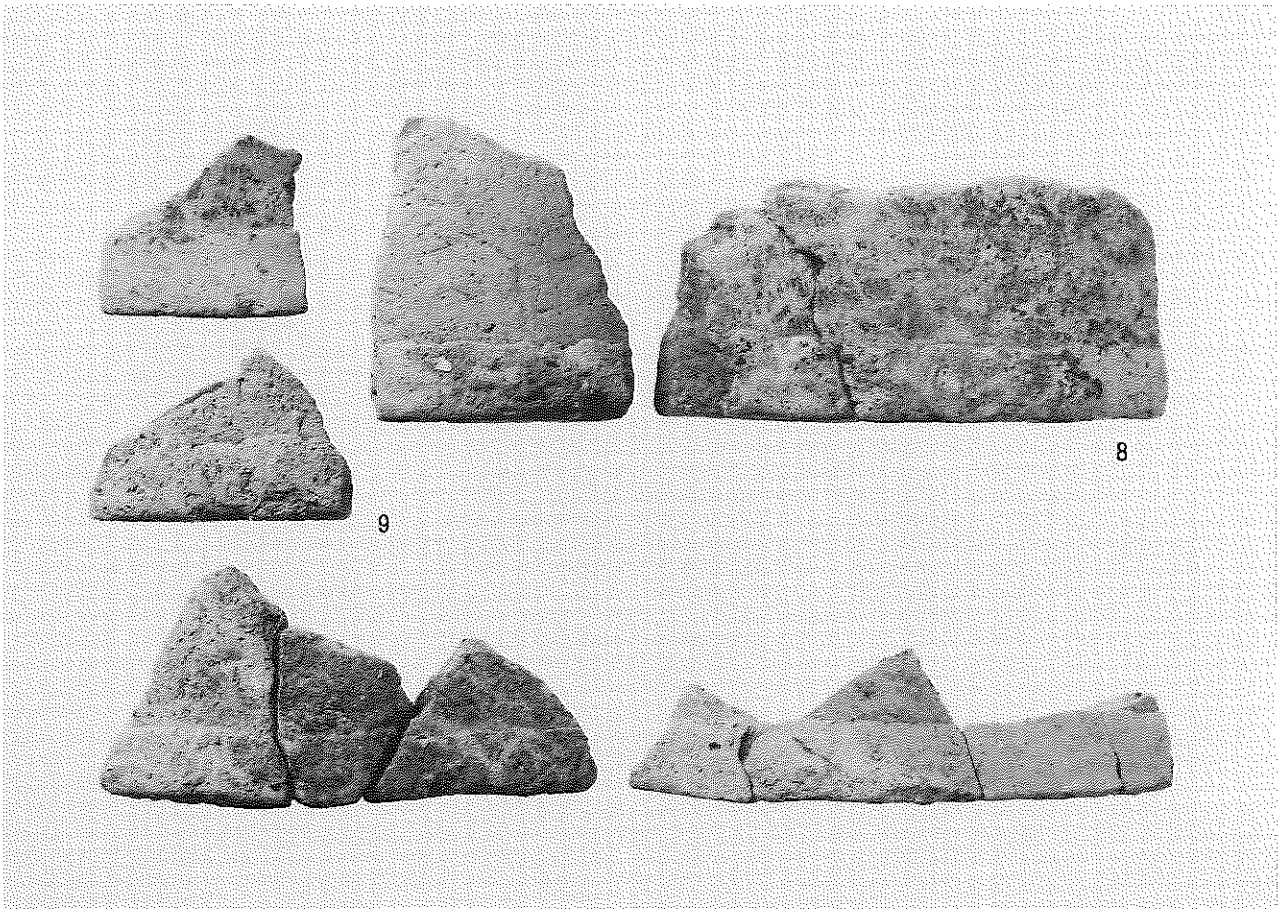
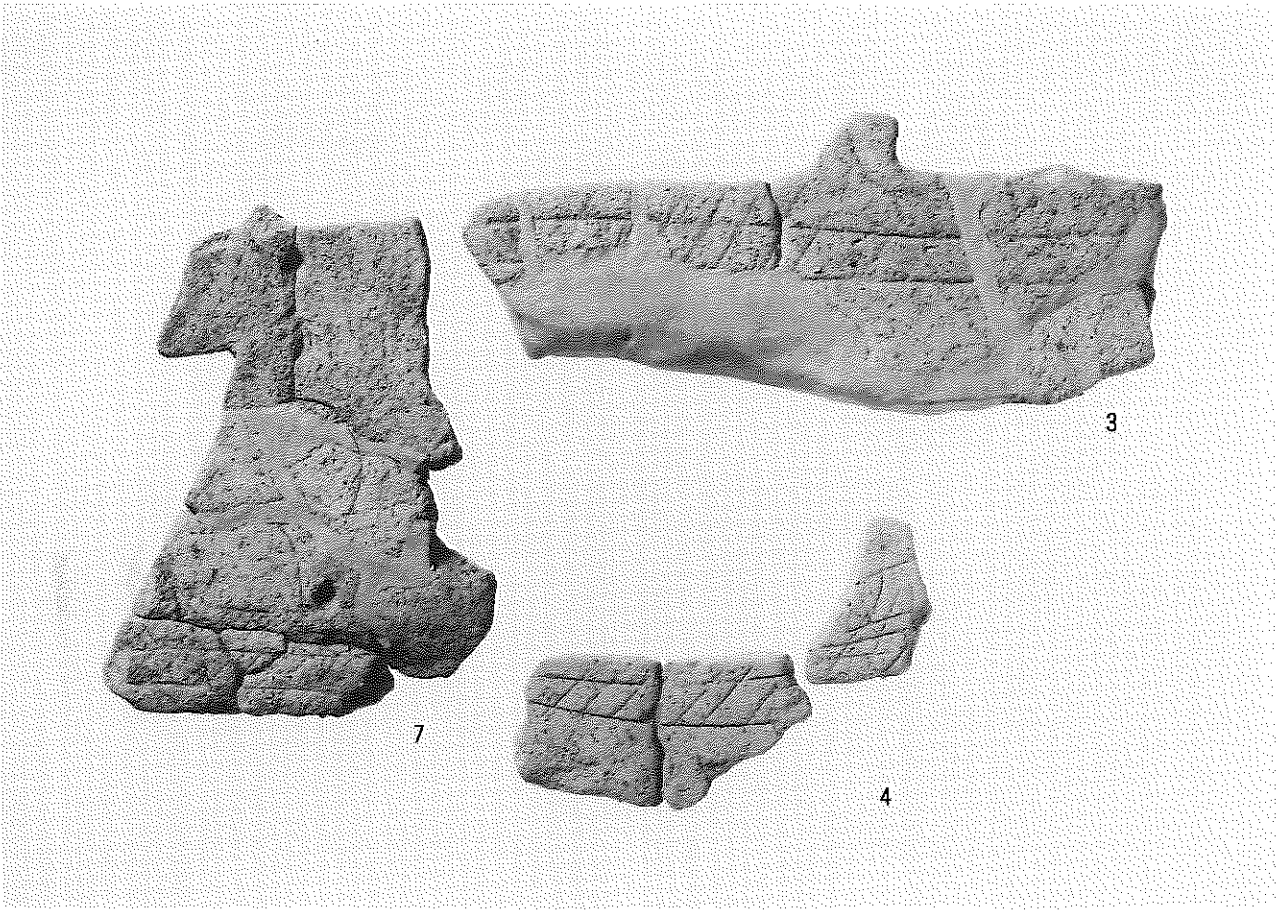


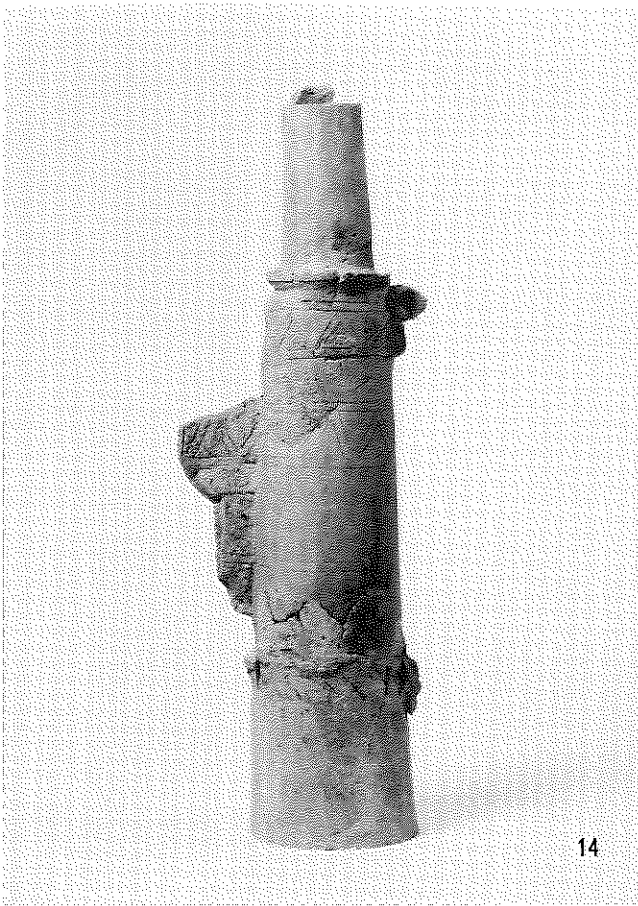
3. SX09断割土層  
（西から）

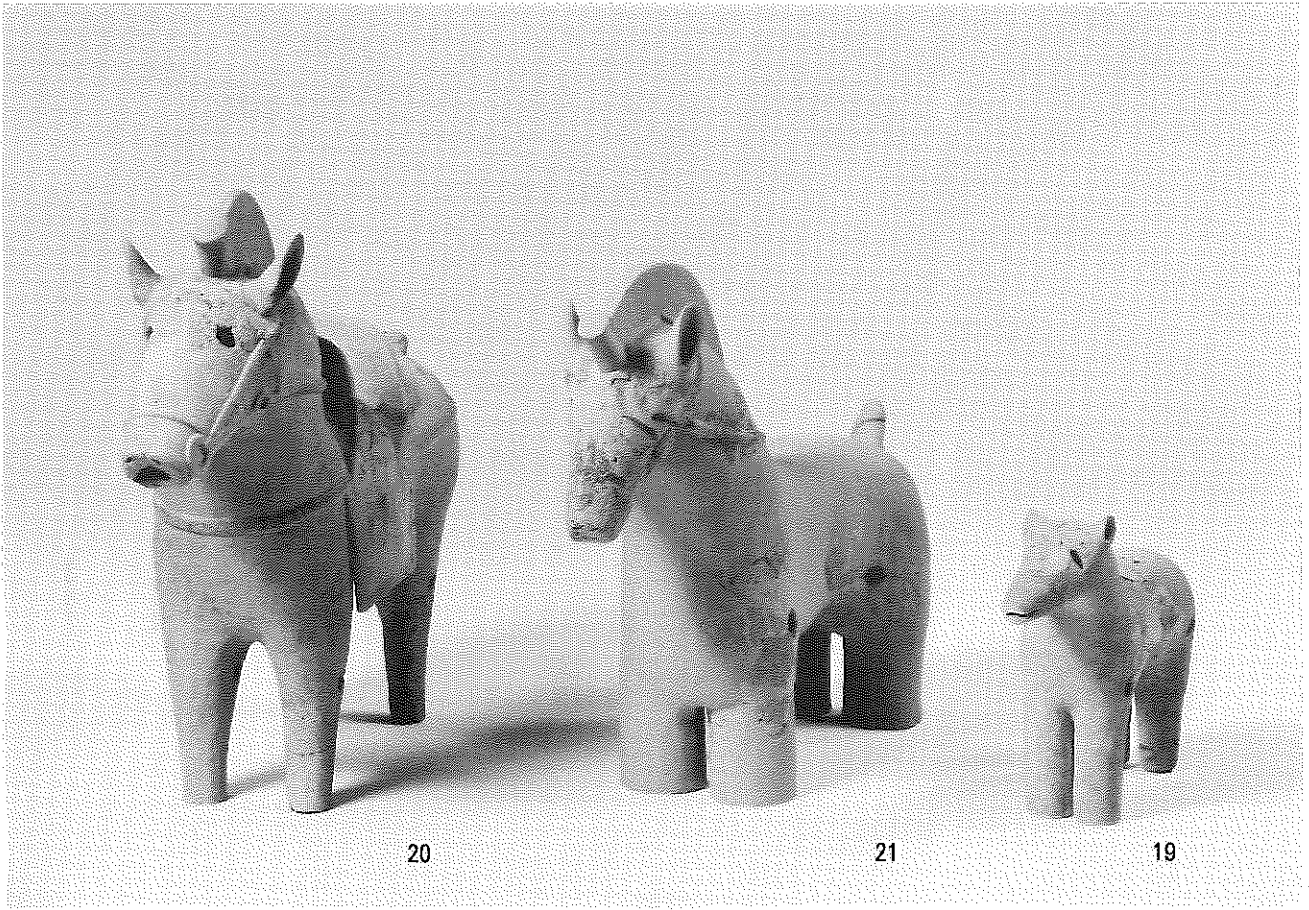












20

21

19



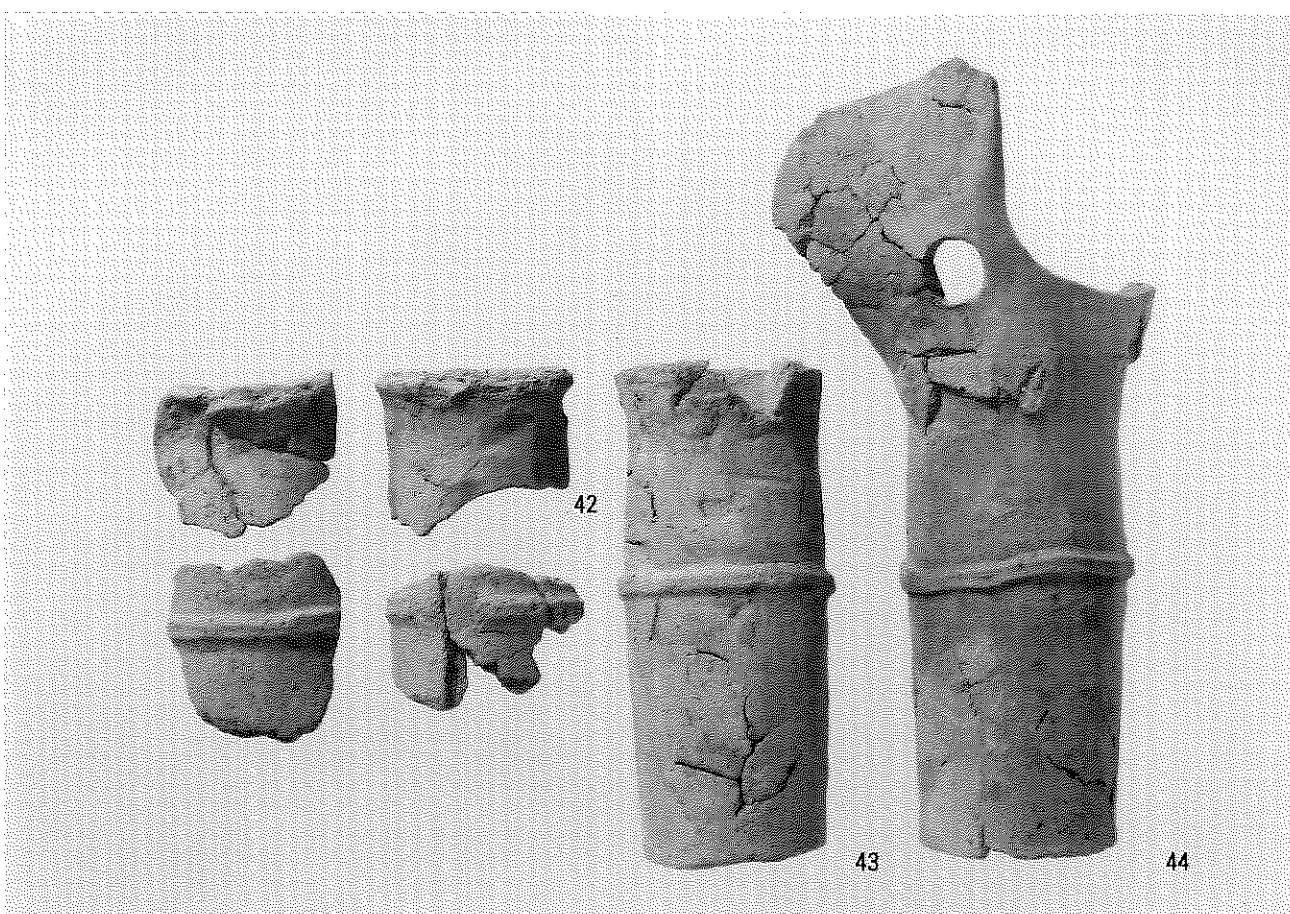
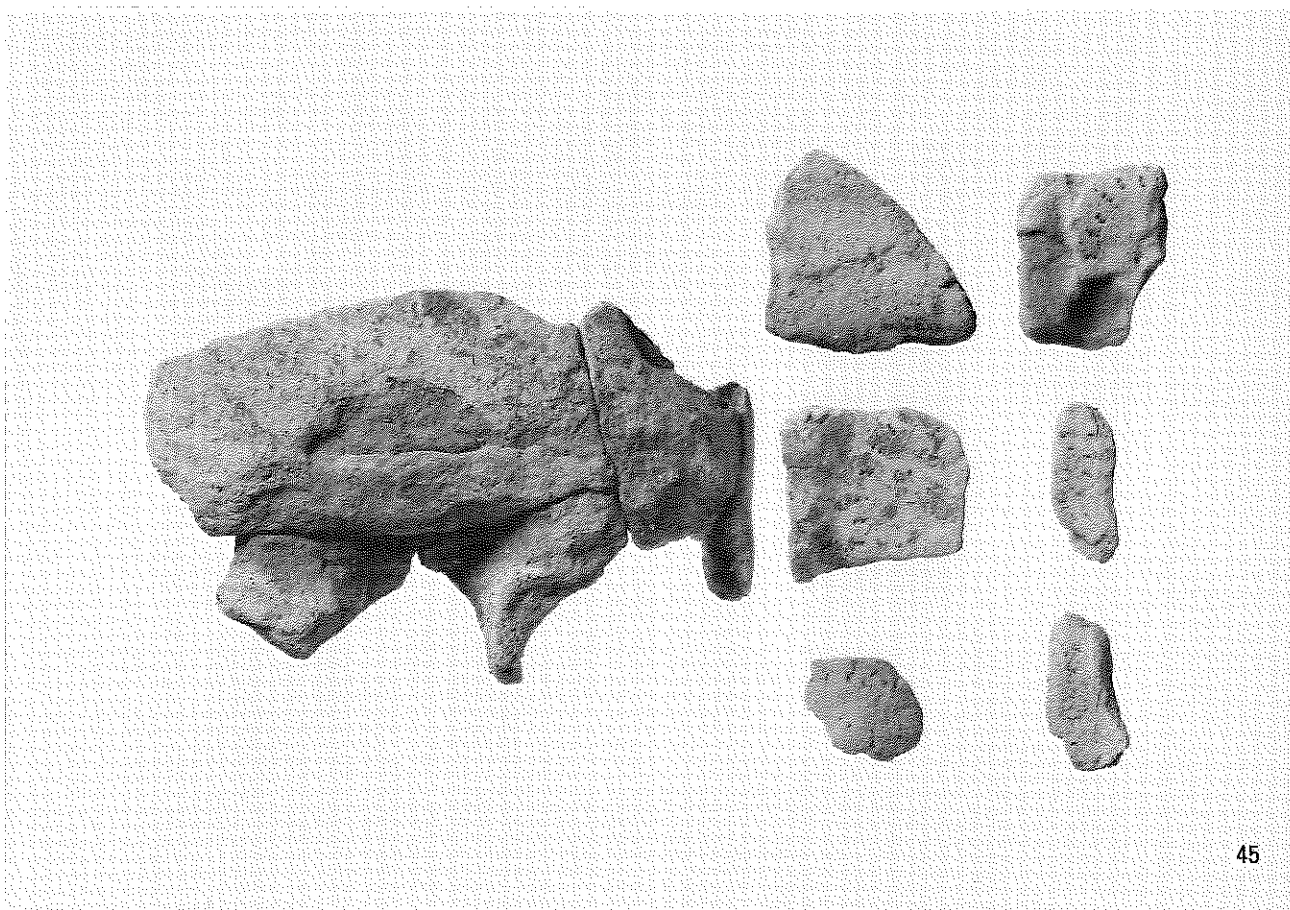
15



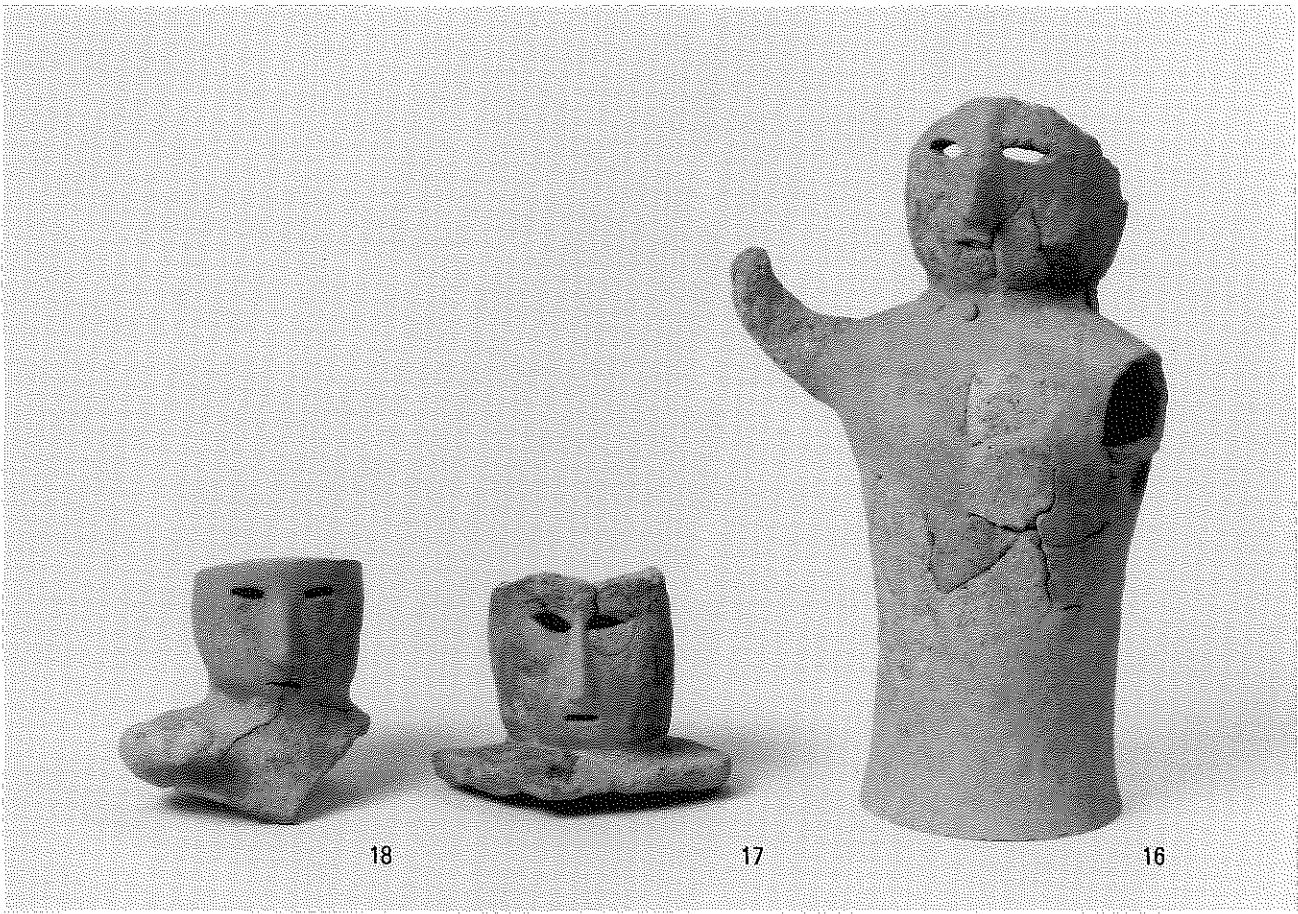
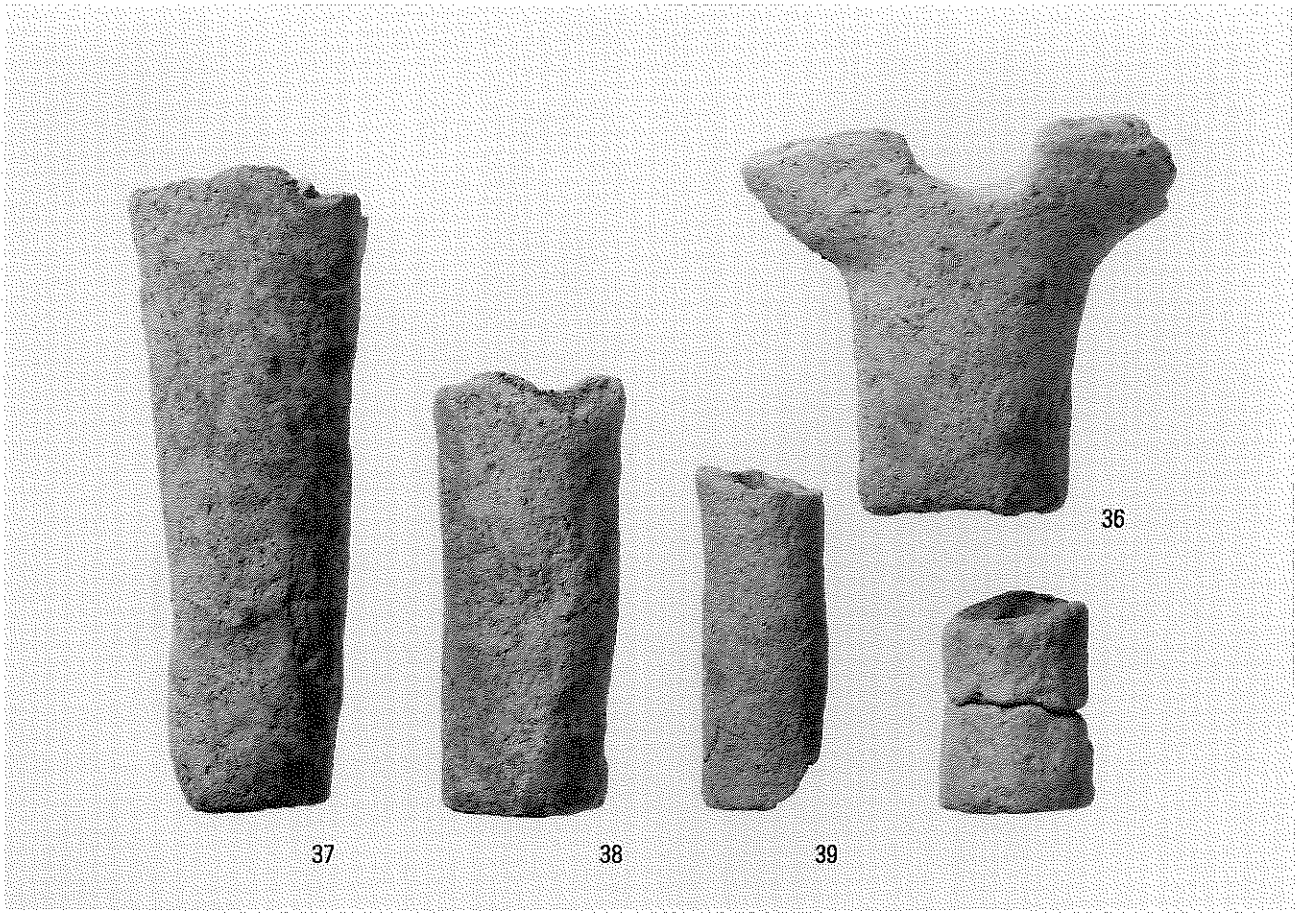
19











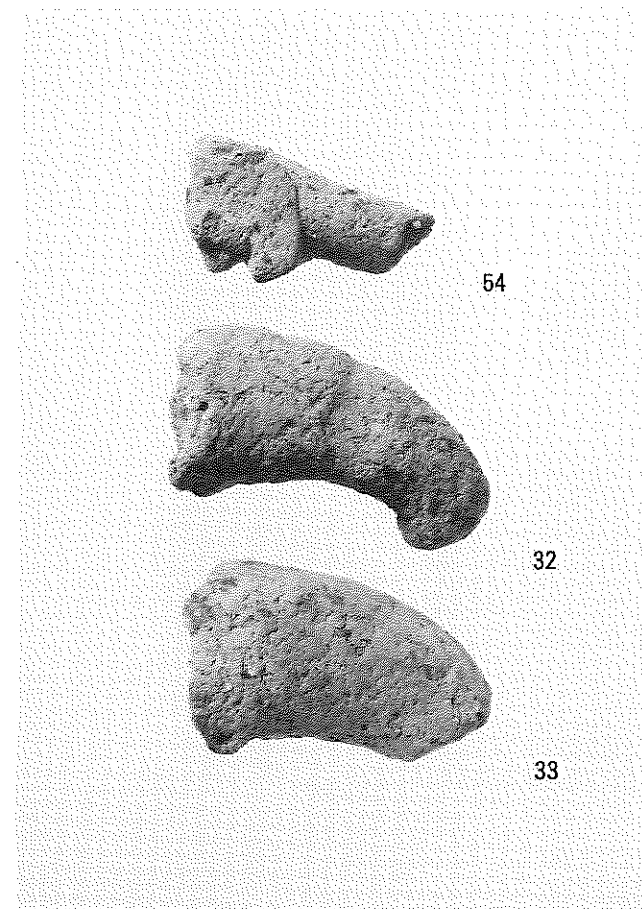




18



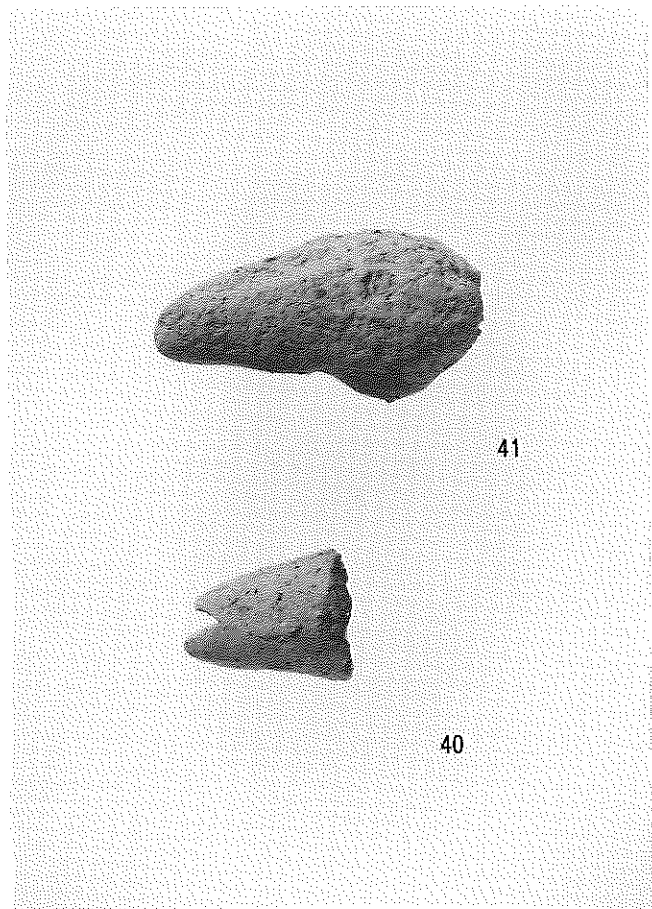
18



54

32

33



41

40



22



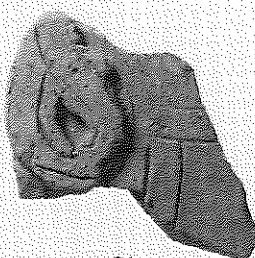
24



23



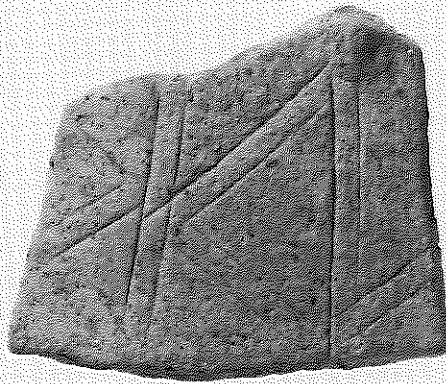
28



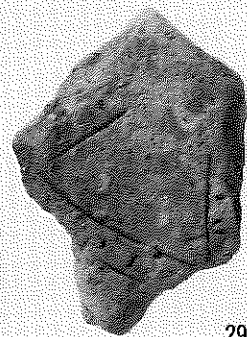
34



35



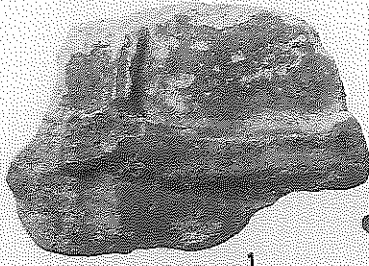
26



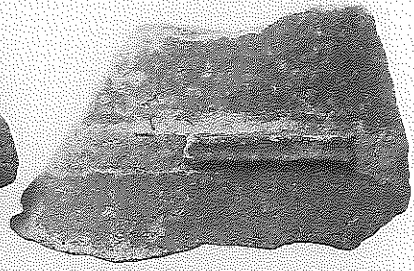
29



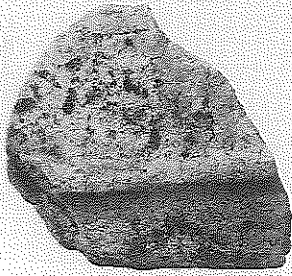
4



1



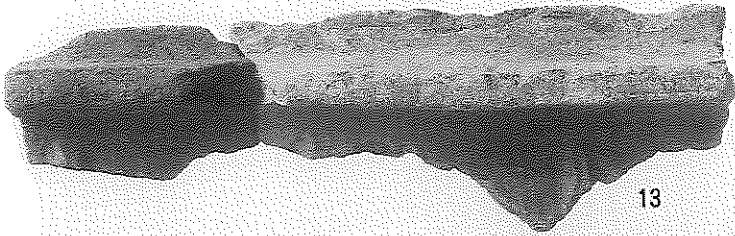
11



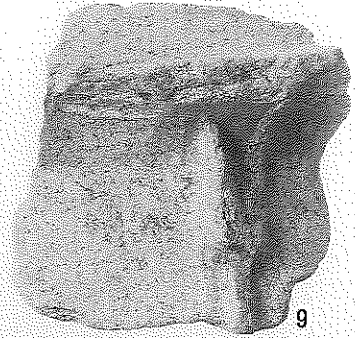
6



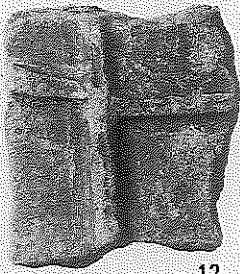
7



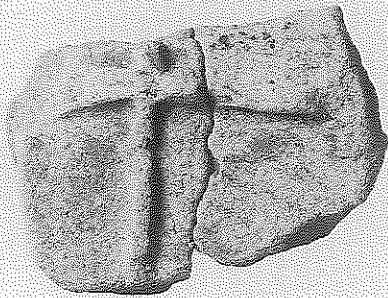
13



9



12



5

